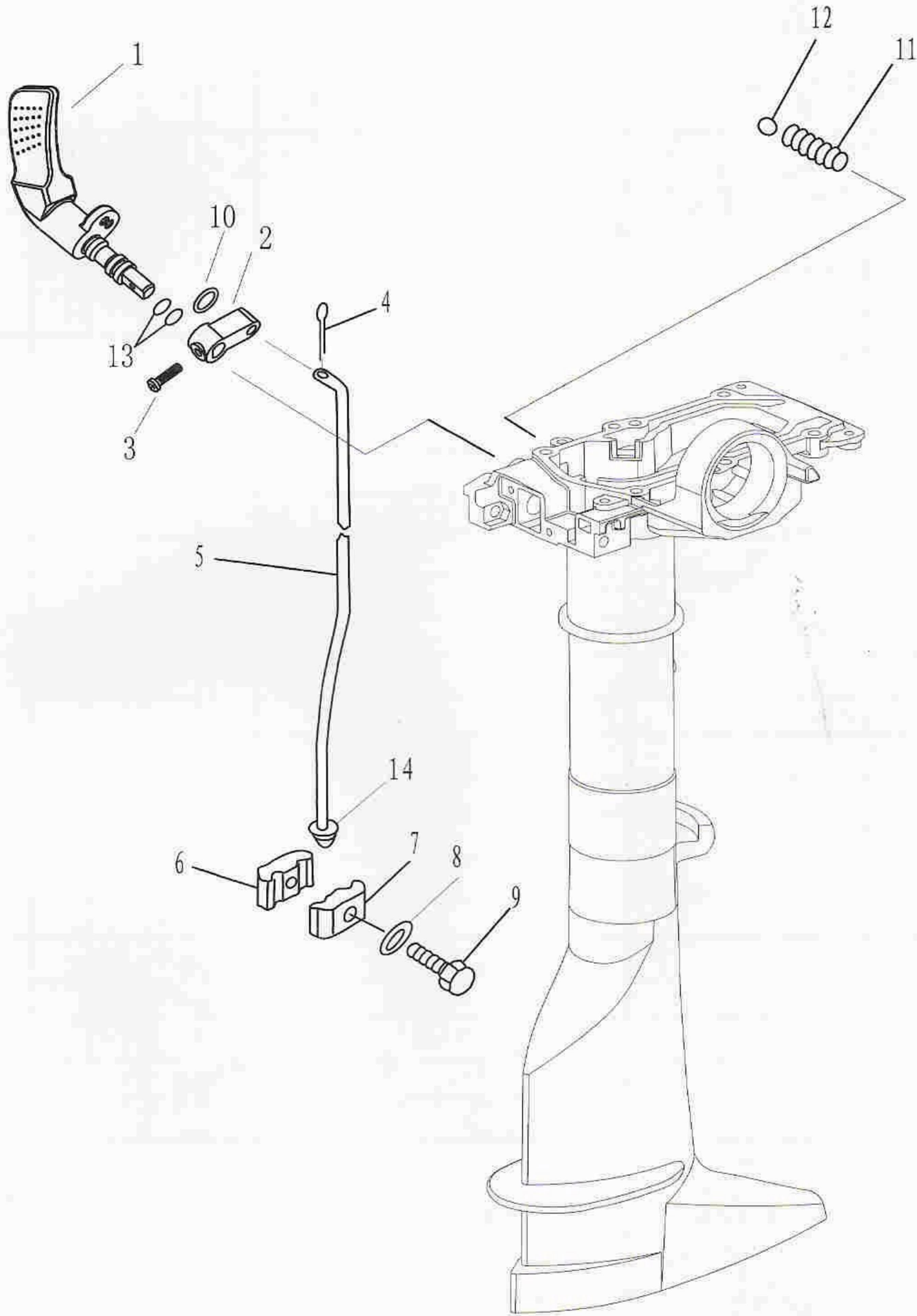


零部件名称:

控制系统

PARTS NAME:

CONTROL



零部件名称:

控制系统

PARTS NAME:

CONTROL

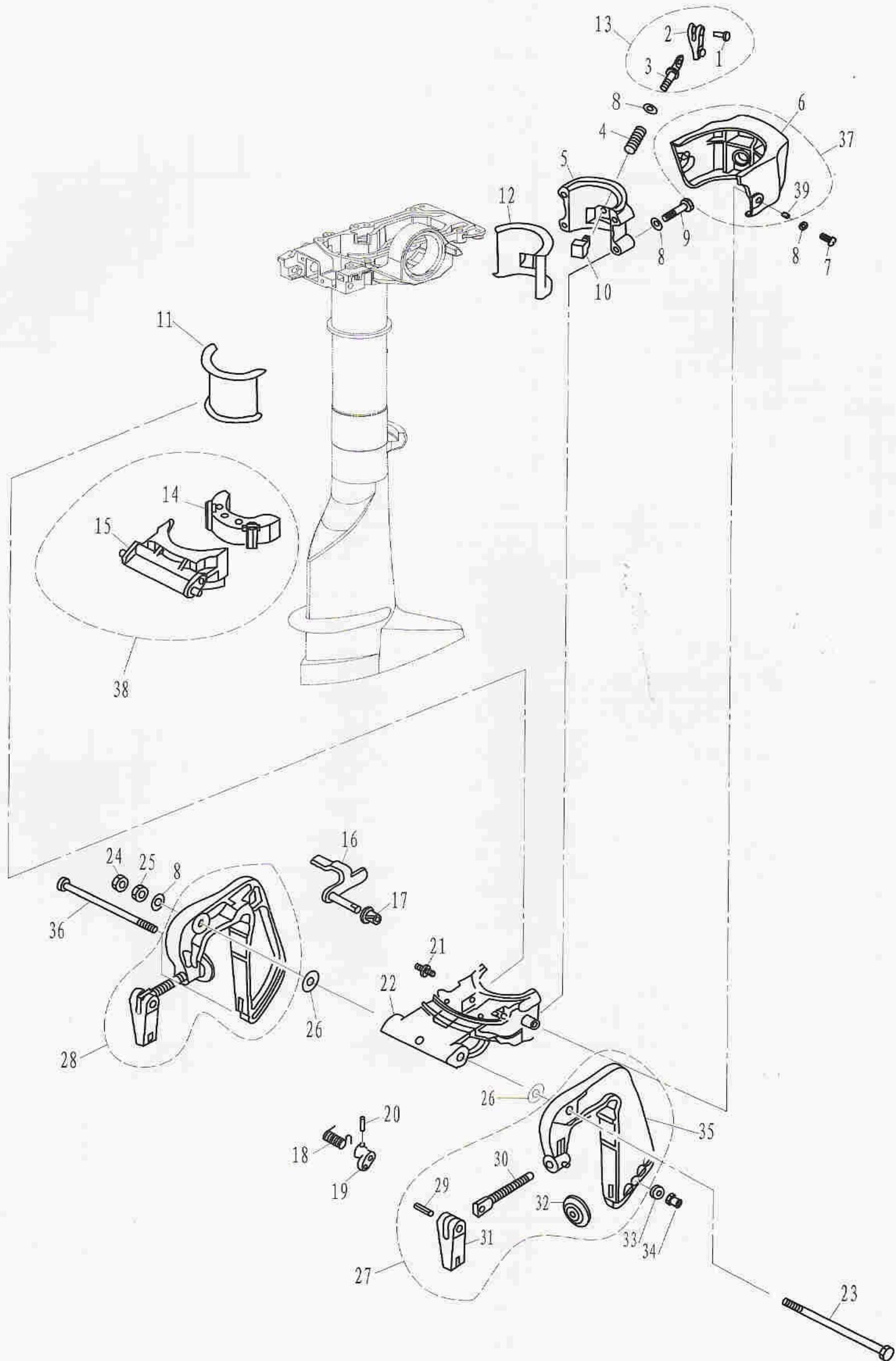
SN. 参照号码	PART NO. 零件编号	DESCRIPTION 零件名称(中文)	DESCRIPTION 零件名称(英文)	QTY 数量					REMARKS 备注
1	T3.6-02020000	变档手柄组件	GEAR SHIFT HANDLE ASSY	1					
2	T3.6-02000004	变档摆杆	SHIFT POD	1					
3	GB/T818-2000	十字槽盘头螺钉M4x12	BOLT M4x12	1					
4	GB/T91-86	开口销1.6x12	PIN, COTTER	1					
5	T3.6-02000003	变档连杆	ROD SHIFT	1					
6	F2.6-00000001	变档连接器A	CONNECTOR, SHIFT ROD A	1					
7	F2.6-00000002	变档连接器B	CONNECTOR, SHIFT ROD B	1					
8	F4-00000005	大垫圈	WASHER	1					
9	GB/T5783-2000	六角螺栓M6x20	BOLT M6x20	1					
10	GB/T97.1-85	平垫圈5	WASHER 5	2					
11	F4-02000003	变档弹簧	SPRING, GEAR	1					
12	GB308-84	钢珠8	BALL 8	1					
13	JISB2401	O形密封圈P9	O-RING	2					

零部件名称:

托架

PARTS NAME:

BRACKET

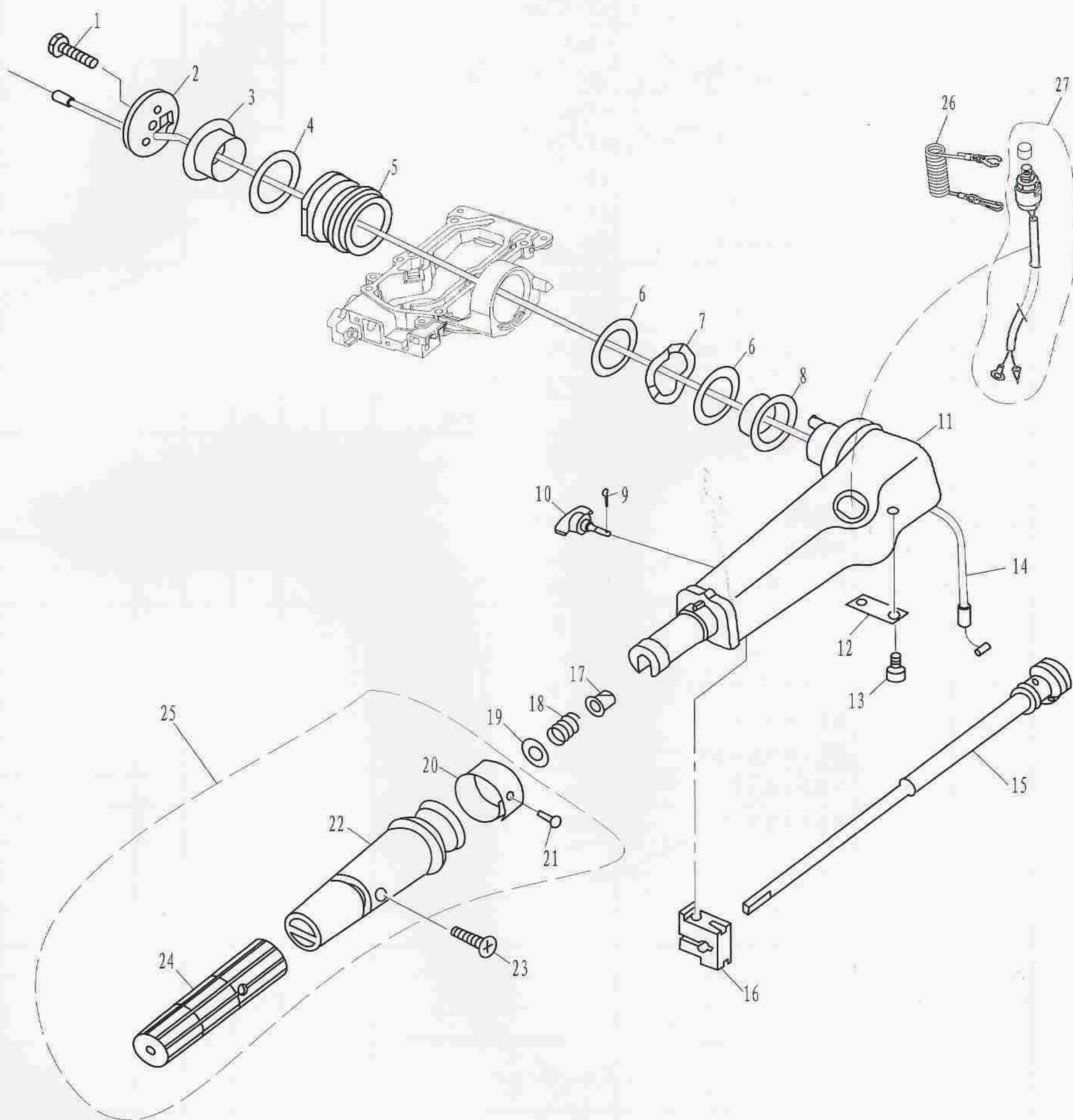


零部件名称:

操舵系统

PARTS NAME:

STEERING



零部件名称:

操舵系统

PARTS NAME:

STEERING

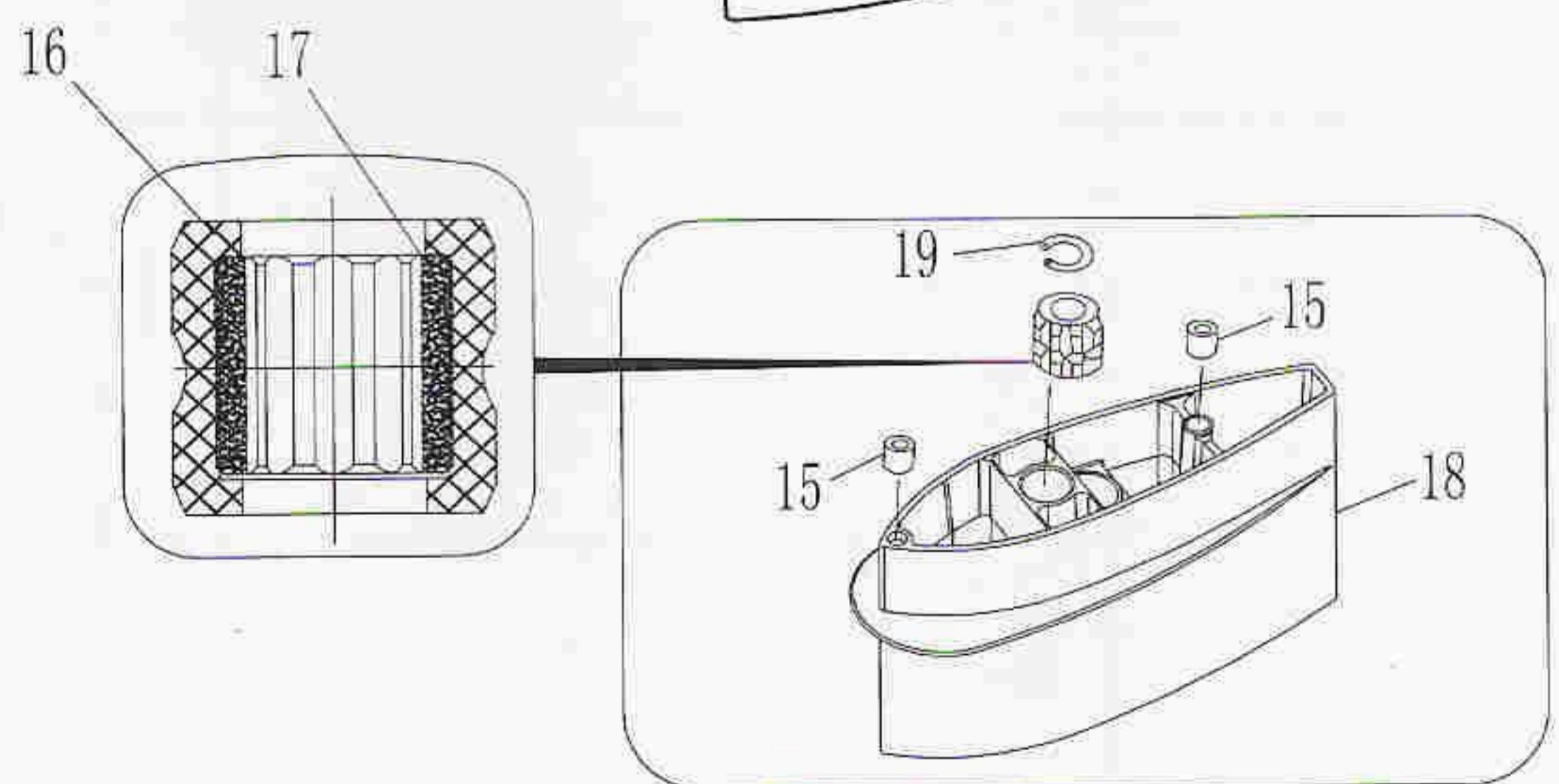
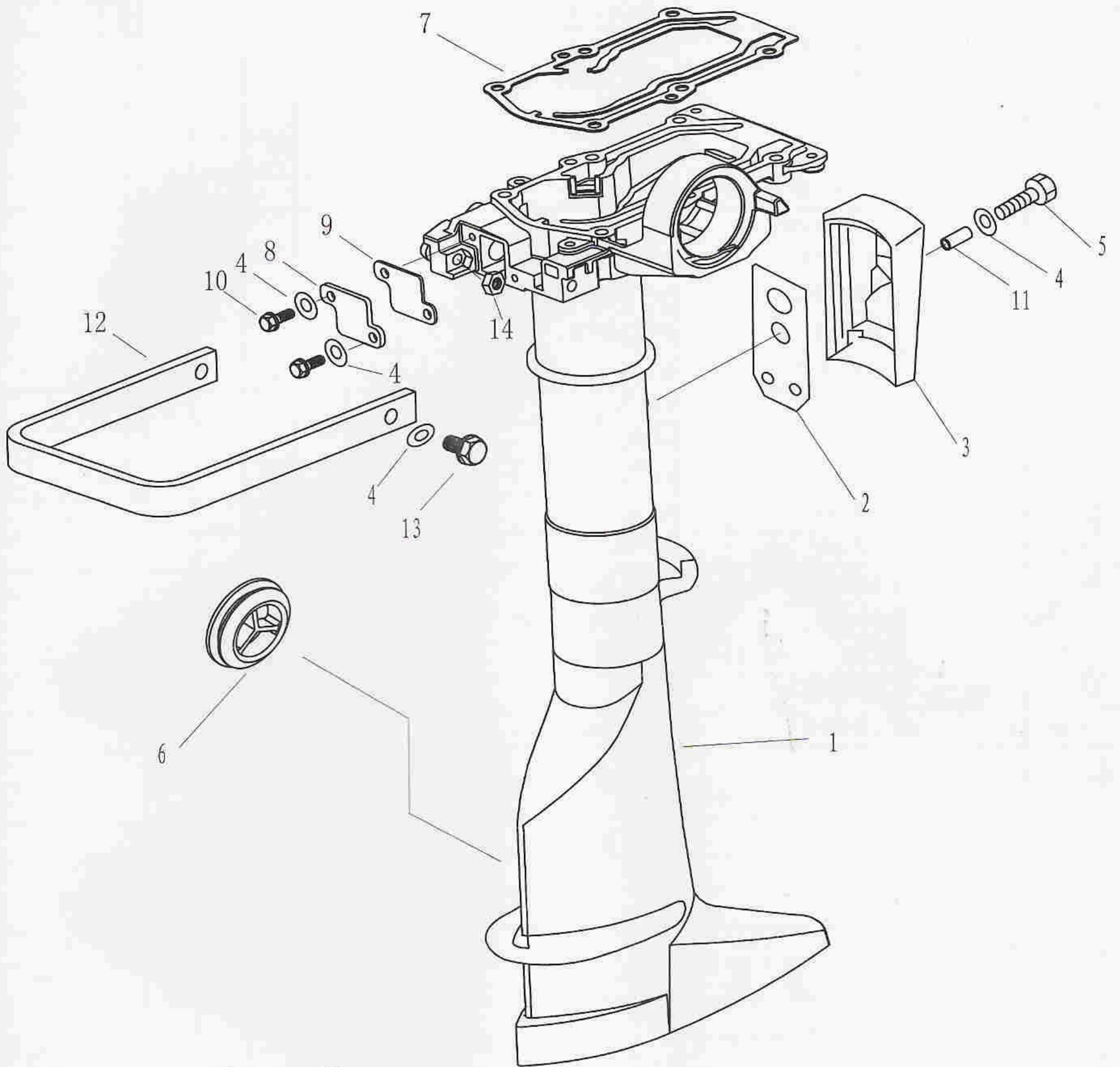
SN. 参照号码	PART NO. 零件编号	DESCRIPTION 零件名称(中文)	DESCRIPTION 零件名称(英文)	QTY 数量					REMARKS 备注
1	GB/T5783-2000	六角螺栓M8x25	BOLT M8x25	1					
2	F4-01000014	操舵手柄盖板	COVER, HANDLE STEERING	1					
3	F4-01000008	操舵手柄衬套B	BUSH B, HANDLE	1					
4	F4-01000011	衬套垫圈A	WASHER A, BUSH	1					
5	F4-05000014	操舵手柄减震器组件	HANDLE DAMPER ASSY	1					
6	F4-01000010	衬套垫圈B	WASHER B, BUSH	2					
7	F4-01000012	手柄衬套波形垫圈	BUSH, WAVE	1					
8	F4-01000009	操舵手柄衬套A	BUSH A, HANDLE	1					
9	GB/T91-86	开口销 $\phi 1.6 \times 12$	PIN, COTTER $\phi 1.6 \times 12$	1					
10	F4-01090200	阻力调整旋钮组件	BOLT , FRICTION ADJUSTING	1					
11	F4-01090001	操舵手柄	HANDLE, STEERING	1					
12	F4-01090002	节气门杆固定板	STAY	1					
13	GB/T818-85	十字槽盘头螺钉M5x12	SCREW, PAN HEAD	2					
14	T3.6-04000600	油门钢索组件	THROTTLE CABLE ASSY	1					
15	F4-01090100	节气门杆组件	LEVER , THROTLLE ASSY	1					
16	F4-01090003	操舵手柄握把摩擦块	FRICTION	1					
17	F4-01090006	衬套	BUSH	1					
18	F4-01090007	压缩弹簧	SPRING	1					
19	GB/T848-85	小垫圈10	WASHER 10	1					
20	T3.6-02010001	油门标志牌	INDICATOR, THROTTLE	1					
21	GB/T827-86	标牌铆钉 $\phi 2 \times 5$	RIVET $\phi 2 \times 5$	1					
22	T3.6-02010101	操舵手柄塑胶套	PLASTIC COVER, HANDLE	1					
23	GB/T820-85	十字槽半沉头螺钉M5x25	SCREW M5x25	1					
24	T15-01020302	操舵手柄橡胶套	RUBBER COVER, HANDLE	1					
25	T3.6-02010100	操舵手柄塑胶套组件	STEERING HANDLE ASSY	1					
26	F4-01090401	引擎停止安全索	STOPER, HANG ROPE ASSY	1					
27	F2.6-02010200	急停开关组件	ENGINE STOP SWITCH ASSY	1					

零部件名称:

水上装置壳体

PARTS NAME:

UPPER CASING



零部件名称:

水上装置壳体

PARTS NAME:

UPPER CASING

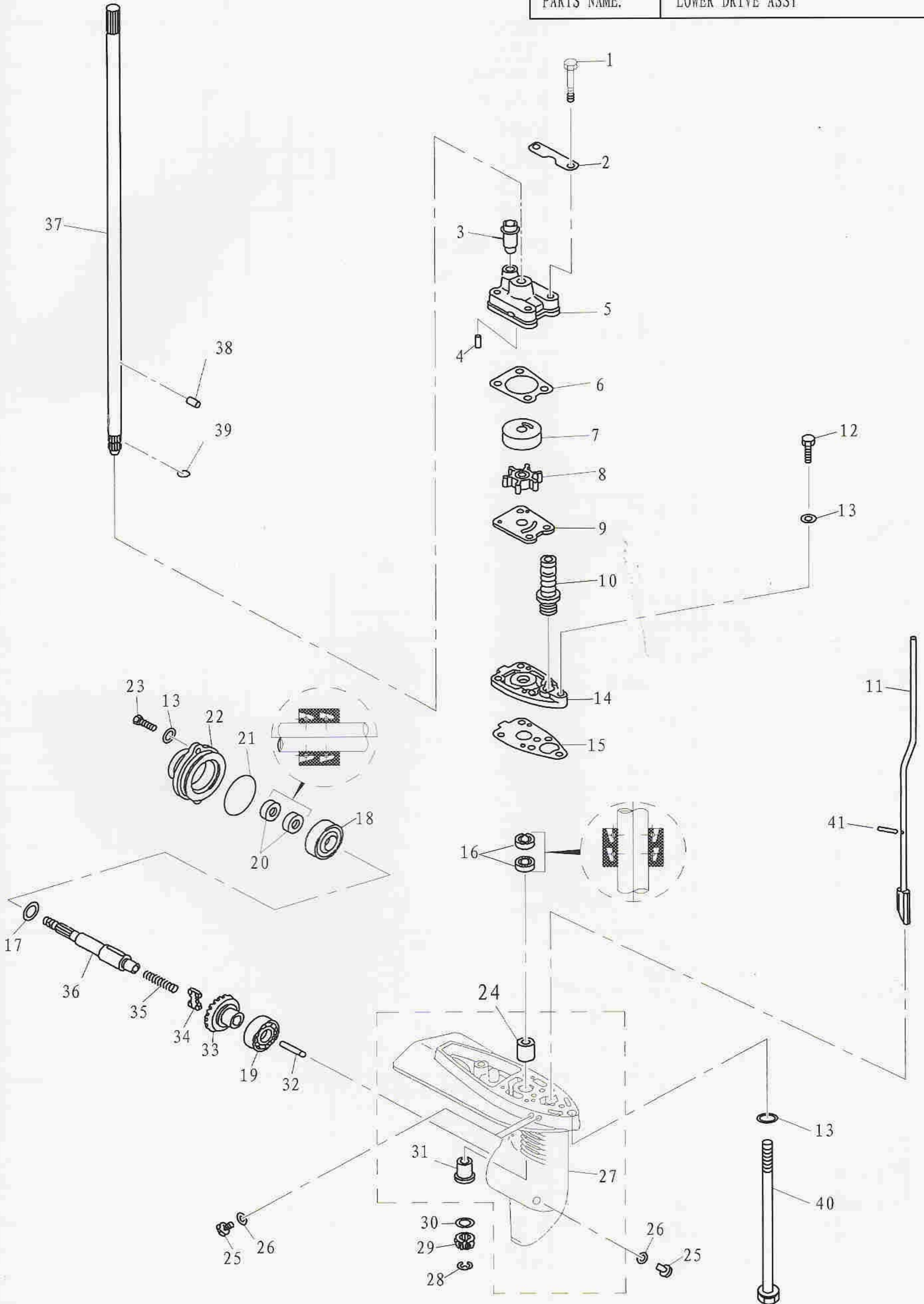
SN. 参照号码	PART NO. 零件编号	DESCRIPTION 零件名称(中文)	DESCRIPTION 零件名称(英文)	QTY 数量					REMARKS 备注
1	T3.6-02000001	水上装置壳体	UPPER CASING	1					
2	T3.6-02000009	排气盖板垫	GASKET, EXHAUST COVER	1					
3	F2.6-02000004	排气盖板	EXHAUST COVER	1					
4	GB/T97.1-85	平垫圈6	WASHER	5					
5	GB/T818-2000	十字槽盘头螺钉M6x16	SCREW	2					
6	F4-02000012	水上装置橡胶堵头	RUBBER PLUG, UPPER	1					
7	T3.6-00000001	发动机密封垫	GASKET, ENGINE	1					
8	T3.6-02000005	变档摆杆盖板	COVER, SHIFT ROD	1					
9	T3.6-02000006	盖板密封垫	GASKET, COVER	1					
10	GB/T5783-2000	六角螺栓M5x12	BOLT M5x12	2					
11	F2.6-00000102	护盖衬管	BUSH	1					
12	T3.6-02000007	手把	HANDEL	1					
13	GB/T5783-2000	六角螺栓M6x25	BOLT M6x25	2					
14	GB/T6170-2000	六角螺母M6	NUT M6	2					
15	F4-00000001	空心定位销	PIN, HOLLOW	2					
16	F4-02030003	驱动轴橡胶衬套	RUBBER BUSHING	1					
17	F4-02030002	驱动轴衬套	BUSHER, DRIVE SHAFT	1					
18	F4-02030001	接长体	EXTENSION	1					
19	GB/T 893.1-1986	孔用弹性挡圈22	CIRCLIP	1					
20	F4-02030003	驱动轴橡胶衬套	RUBBER BUSHING	1					

零部件名称:

水下驱动组件

PARTS NAME:

LOWER DRIVE ASSY



零部件名称:

水下驱动组件

PARTS NAME:

LOWER DRIVE ASSY

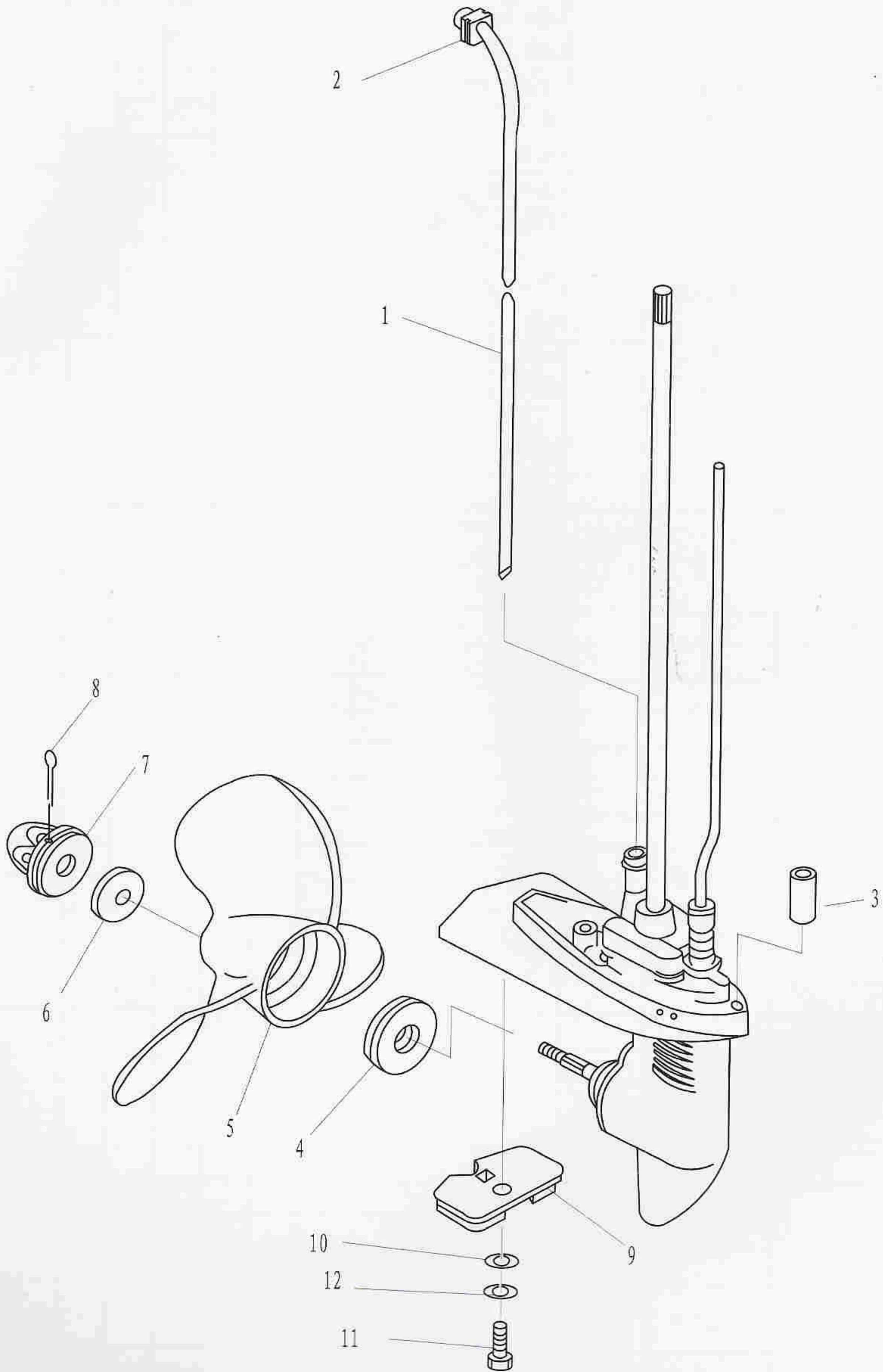
SN. 参照号码	PART NO. 零件编号	DESCRIPTION 零件名称(中文)	DESCRIPTION 零件名称(英文)	QTY 数量				REMARKS 备注
1	GB/T5782-2000	六角头螺栓M6x45	HEXAGON BOLT M6x45	4				
2	F4-03000020	泵壳固定板	PLATE ,WATER PUMP FIXED	2				
3	F4-03000021	泵壳橡胶管	RUBBER TUBE ,WATER PUMP	1				
4	F4-03000013	水泵座定位销	PIN ,WATER PUMP	2				
5	F4-03000019	水泵壳	HOUSING ,WATER PUMP	1				
6	F4-03000018	泵壳密封垫	GASKET ,WATER PUMP COVER	1				
7	F4-03000017	水泵内壳	COVER ,INNER WATER PUMP	1				
8	F4-03060000	水泵叶轮	IMPELLER ,WATER PUMP	1				
9	F4-03000015	外挡板	OUT PLATE	1				
10	F4-03000014	变档橡胶护套(含弹簧)	RUBBER JACKET ,SHIFT ROD	1				
11	T3.6-03010000	变档凸轮组件	CAM ASSY ,SHIFT ROD	1				L
	T3.6-03010000S	变档凸轮组件	CAM ASSY ,SHIFT ROD	1				S
12	GB/T5783-2000	六角头螺栓M6x25	HEXAGON BOLT M6x25	1				
13	GB/T97.1-85	平垫圈6	WASHER ,PLATE6	5				
14	F4-03000012	水泵座	BASE ,WATER PUMP	1				
15	F4-03000011	水泵座密封垫	HERMETIC GASKET	1				
16	F4-03000027	驱动轴下油封 10.8x21x7	OIL SEAL	2				
17	E4-03000003	螺旋桨轴垫圈	WASHER, SHAFT PROPELLER	2				
18	GB/T276-94	深沟球轴承6302	BEARING	1				
19	GB/T276-94	深沟球轴承6004C2	BEARING	2				
20	F4-03050002	螺旋桨轴油封13x22x7	OIL SEAL	2				
21	JISB2401 P48	水下装置壳体盖O形圈	O-RING	1				
22	F4-03050001	水下装置壳体盖	COVER ,LOWER CASING	1				
23	GB/T5783-2000	六角头螺栓M6x20	HEXAGON BOLT M6x20	2				
24	F4-03000003	不带档边筒形轴承	BEARING	1				
25	F4-03000023	注油孔螺塞	PLUG ,OIL HOLE	3				
26	F4-03000024	注油孔螺塞垫圈	GASKET	3				
27	F4-03000001	水下装置壳体	LOWER CASING	1				
28	GB/T896-86	开口档圈6	CIRCLIP	1				
29	F4-03000007	主动齿轮	INITIATIVE GEAR	1				
30	F4-03000006	主动齿轮垫圈	WASHER ,INITIATIVE GEAR	1				
31	F4-03000002	带档边筒形轴承	BEARING	1				
32	F4-03000008	变档柱塞	PLUGER ,SHIFT	1				
33	F4-03010000	正档齿轮组件	POSITIVE GEAR ASSY	1				
34	F4-03030002	离合器块	CLUTCH BLOCK	1				
35	F4-03000003	离合器块压簧	SPRING ,CLUTCH BLOCK	1				
36	F4-03030001	螺旋桨轴	SHAFT ,PROPELLER	1				
37	T3.6-03000001	驱动轴	SHAFT ,DRIVE	1				L
	T3.6-03000001S	驱动轴	SHAFT ,DRIVE	1				S
38	F4-03000016	叶轮定位销	PIN	2				
39	F4-03000005	轴用钢丝档圈	CLIP	1				
40	GB/T5782-2000	六角头长螺栓M6x167	HEXAGON BOLT	2				L
	GB/T5782-2000	六角头长螺栓M6x40	HEXAGON BOLT	2				S
41	GB/T879.2-85	轻型直槽圆柱销 ϕ 2.5x20	PIN	1				

零部件名称:

水下装置壳体和驱动系统

PARTS NAME:

LOWER CASING & DRIVE 2



零部件名称:

水下装置壳体和驱动系统

PARTS NAME:

LOWER CASING & DRIVE 2

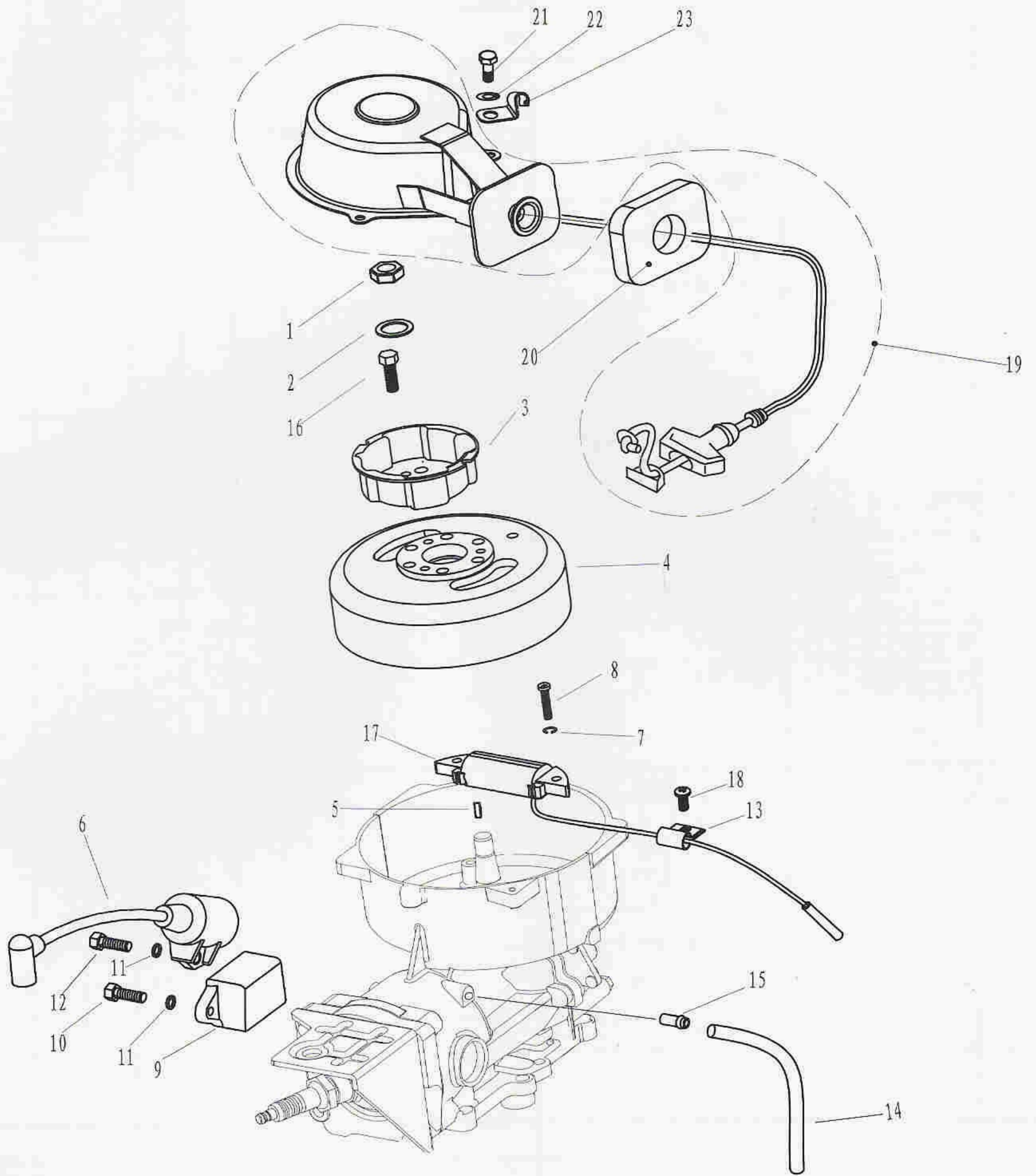
SN. 参照号码	PART NO. 零件编号	DESCRIPTION 零件名称(中文)	DESCRIPTION 零件名称(英文)	QTY 数量					REMARKS 备注
1	T3.6-02000002	进水管	WATER TUBE	1					
	T3.6-02000002S	进水管	WATER TUBE	1					
2	T3.6-02000008	工形橡胶圈	I-SHAPED RUBBER BAND	1					
3	F4-00000001	空心座定位销	PIN	2					
4	F4-03000025	不锈钢垫块	SPACER	1					
5	F4-03070001	螺旋桨组件	PROPELLER ASSY	1					
6	F4-03000026	不锈钢垫片	WASHER	1					
7	F4-03080000	螺母组件	NUT ASSY	1					
8	GB/T91-86	开口销2.5x30	PIN, COTTER 2.5x30	1					
9	F4-03000022	阳极	ANODE	1					
10	GB/T861.1-87	内齿锁紧垫圈6	WASHER, INTERNAL TOOTH 6	1					
11	GB/T5783-2000	六角螺栓M6x14	BOLT M6x14	1					

零部件名称:

点火系统

PARTS NAME:

IGNITION ASS'Y



零部件名称:

点火系统

PARTS NAME:

IGNITION ASS'Y

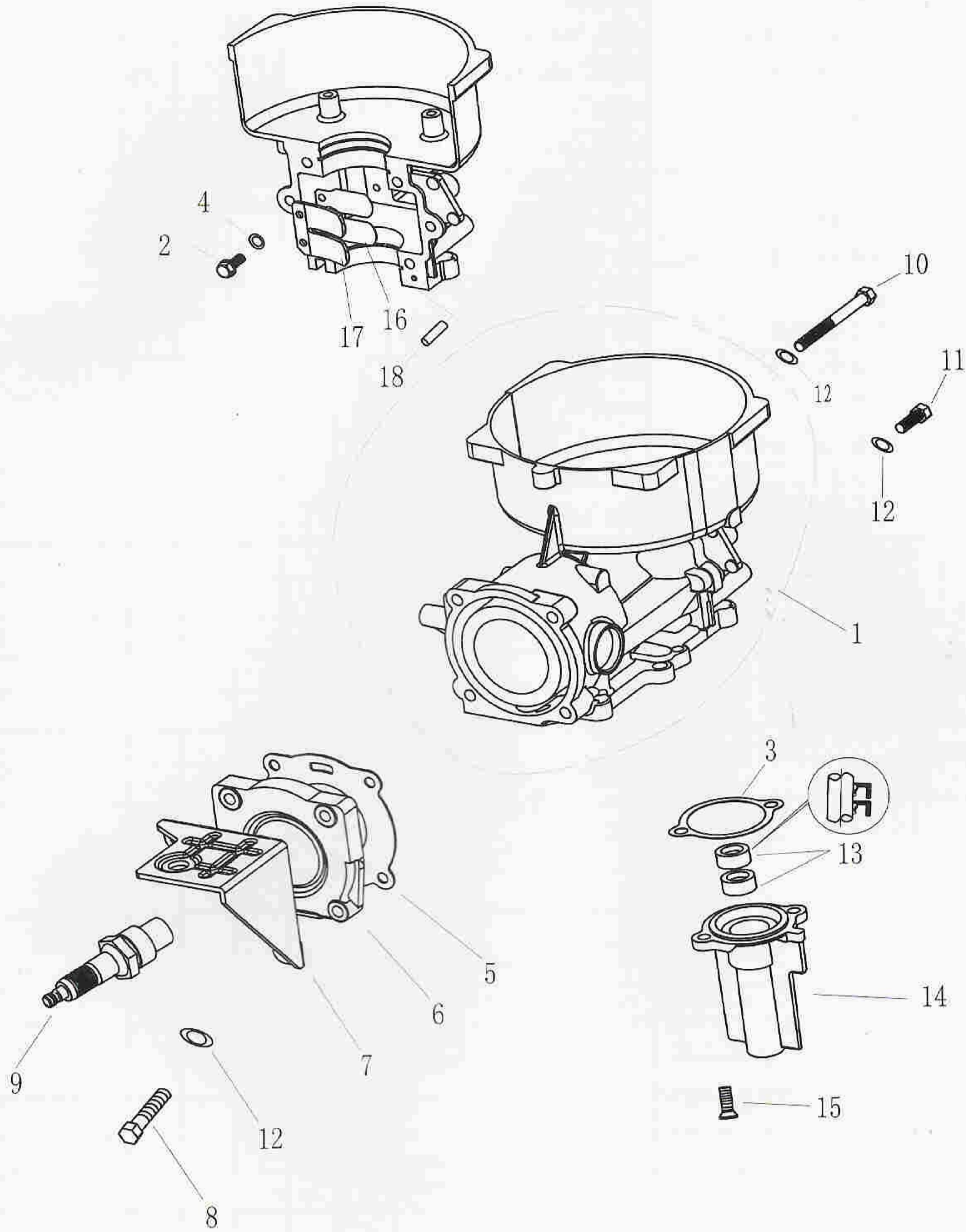
SN. 参照号码	PART NO. 零件编号	DESCRIPTION 零件名称(中文)	DESCRIPTION 零件名称(英文)	QTY 数量					REMARKS 备注
1	F4-04000026	飞轮螺母M10x1.25	NUT	1					
2	T3.6-04000016	飞轮垫圈	WASHER	1					
3	T3.6-04000007	起动轴套	PULLEY, STARTER	1					
4	T3.6-04000200	飞轮组件	FLYWHELL ASSY	1					
5	T3.6-04000006	飞轮半圆键	KEY	1					
6	T3.6-04000300	高压包组件	HIGH PRESSURE ASSY	1					
7	GB/T93-1987	弹性垫圈5	WASHER, SPRING	2					
8	GB/T818-2000	十字槽盘头螺钉M5x20	SCREW, PAN HEAD M5x20	2					
9	T3.6-04000400	点火模块组件	C. D. I. UNIT ASSY	1					
10	GB/T5783-2000	六角螺栓M6x16	BOLT M6x16	1					
11	GB/T97.1-85	平垫圈6	WASHER	1					
12	GB/T5783-2000	六角螺栓M6x20	BOLT M6x20	1					
13	T3.6-04000005	卡箍A	CLAMP A	1					
14	T3.6-04000009	水管 $\phi 2.5 \times \phi 7 \times 150$	TUBE, WATER	1					
15	T15-03010202	出水嘴	DRAIN TUBE	1					
16	GB/T5783-2000	六角螺栓M6x12	BOLT M6x12	3					
17	T3.6-04000100	触发线圈组件	LOIL, PULSER	1					
18	GB/T818-2000	十字槽盘头螺钉	SCREW, PAN HEAD M5x10	1					
19	T3.6-04040000	起动机组件	STARTER ASS'Y	1					
20	T3.6-04000014	起动减震块	BLOCK, SHOCK ABSORPTION	1					
21	GB/T5783-2000	六角螺栓M6x12	BOLT M6x12	2					
22	GB/T97.1-85	平垫圈 6	WASHER 6	2					
23	T3.6-04000015	卡箍B	CLAMP B	1					

零部件名称:

汽缸 & 曲轴箱

PARTS NAME:

CYLINDER & CRANKCASE



零部件名称:

汽缸 & 曲轴箱

PARTS NAME:

CYLINDER & CRANKCASE

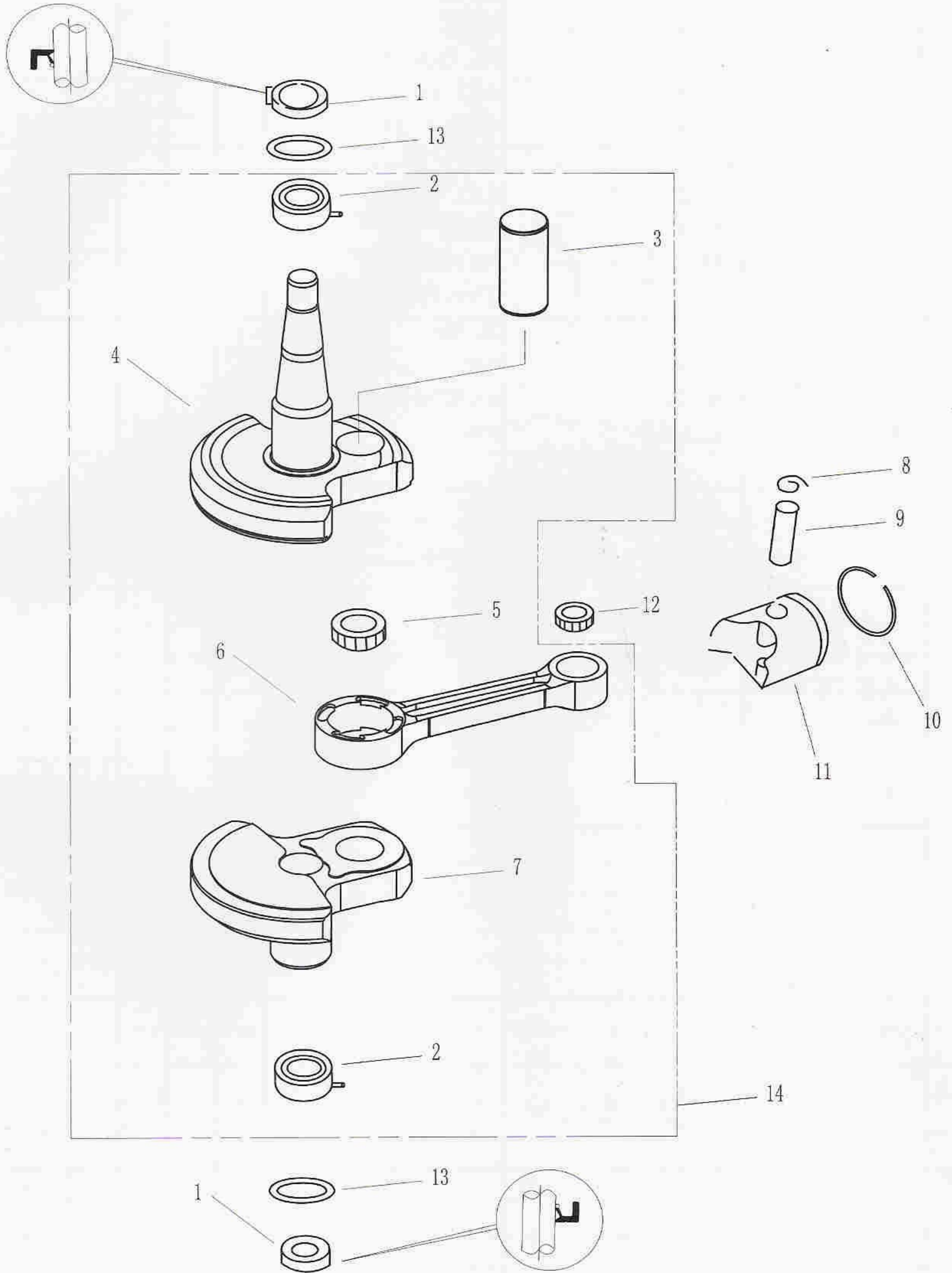
SN. 参照号码	PART NO. 零件编号	DESCRIPTION 零件名称(中文)	DESCRIPTION 零件名称(英文)	QTY 数量					REMARKS 备注
1	T3.6-04010000	机体机座组件	CRANKCASE ASSY	1					
2	GB/T818-2000	十字槽盘头螺钉M4x12	SCREW, PAN HEAD M4x12	2					
3	T3.6-04000004	油封壳体密封垫	GASKET, SHELL OIL SEAL	1					
4	GB/T97.1-85	平垫圈4	WAHSER 4	2					
5	T3.6-04000001	缸头复合垫	GASKET, CYLINDER HEAD	1					
6	T3.6-04000002	气缸盖	CYLINDER COVER	1					
7	T3.6-04000003	油箱支撑板	PLATE, TONK	1					
8	GB/T5783-2000	六角螺栓M6×30	BOLT M6x30	4					
9	BPR6HS 10	火花塞	SPARK PLUG	1					
10	GB/T5782-2000	六角螺栓M6×65	BOLT M6x65	4					
11	GB/T5783-2000	六角螺栓M6×30	BOLT M6x30	2					
12	GB/T97.1-85	平垫圈6	WAHSER 6	10					
13	F4-04060004	驱动轴上油封10.8×21×7	OIL SEAL	2					
14	T3.6-04030001	油封壳体	SHELL, OIL SEAL	1					
15	GB/T819.1-2000	十字槽沉头螺钉M6x14	SCREW M4x12	2					
16	T3.6-04010202	进气阀片	PLATE, INTAKE VALVE	1					
17	T3.6-04010203	阀片限位板	LIMITATIVE PLATER, VALVE	1					
18	F15-00000006	定位销∅6x12	PIN	2					

零部件名称:

曲轴&活塞

PARTS NAME:

CRANKSHAFT & PISTON



零部件名称:

曲轴&活塞

PARTS NAME:

CRANKSHAFT & PISTON

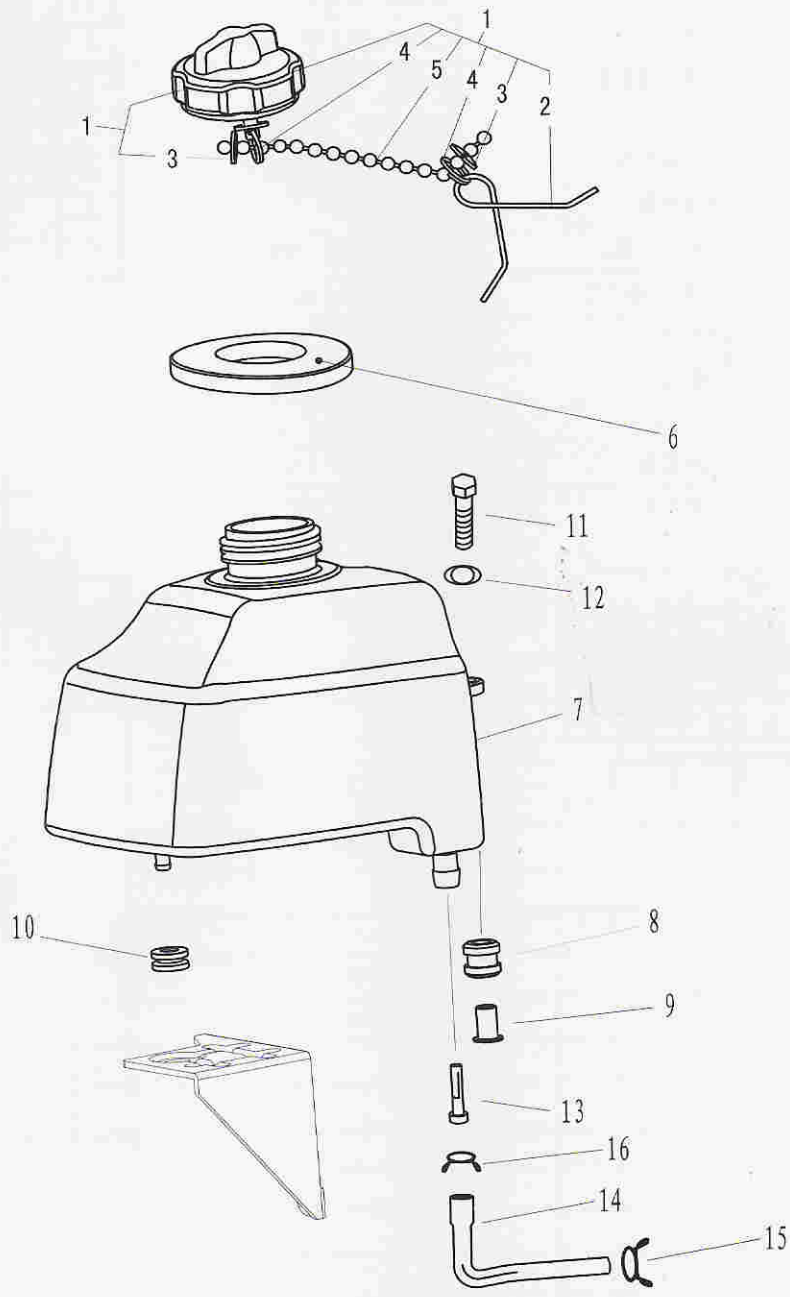
SN. 参照号码	PART NO. 零件编号	DESCRIPTION 零件名称(中文)	DESCRIPTION 零件名称(英文)	QTY 数量					REMARKS 备注
1	T3.6-04010002	曲轴油封20x42x8	OIL SEAL	2					
2	GB/T276-94	深沟球轴承6004C2(带销)	BEARING	2					
3	T3.6-04020102	曲柄销	PIN, CRANKSHAFT	1					
4	T3.6-04020101	曲轴甩块A	BLOCK, SWING A	1					
5	T3.6-04020103	滚针轴承	NEEDLE ROLLERBEARING	1					
6	T3.6-04020104	连杆	ROD	1					
7	T3.6-04020105	曲轴甩块B	BLOCK, SWING B	1					
8	T3.6-04020003	活塞销卡簧	CIRCLIP	2					
9	T3.6-04020005	活塞销	PIN, PISTON	1					
10	T3.6-04020002	活塞环	PISTON RING	1					
11	T3.6-04020001	活塞	OIL SEAL	1					
12	T3.6-04020004	滚针轴承	NEEDLE	1					
13	T3.6-04010001	曲轴定位片	ROLLERBEARING	2					
14	T3.6-04020100	曲轴连杆组件	CRANK ASSY	1					

零部件名称:

燃油系统

PARTS NAME:

FUEL



零部件名称:

燃油系统

PARTS NAME:

FUEL

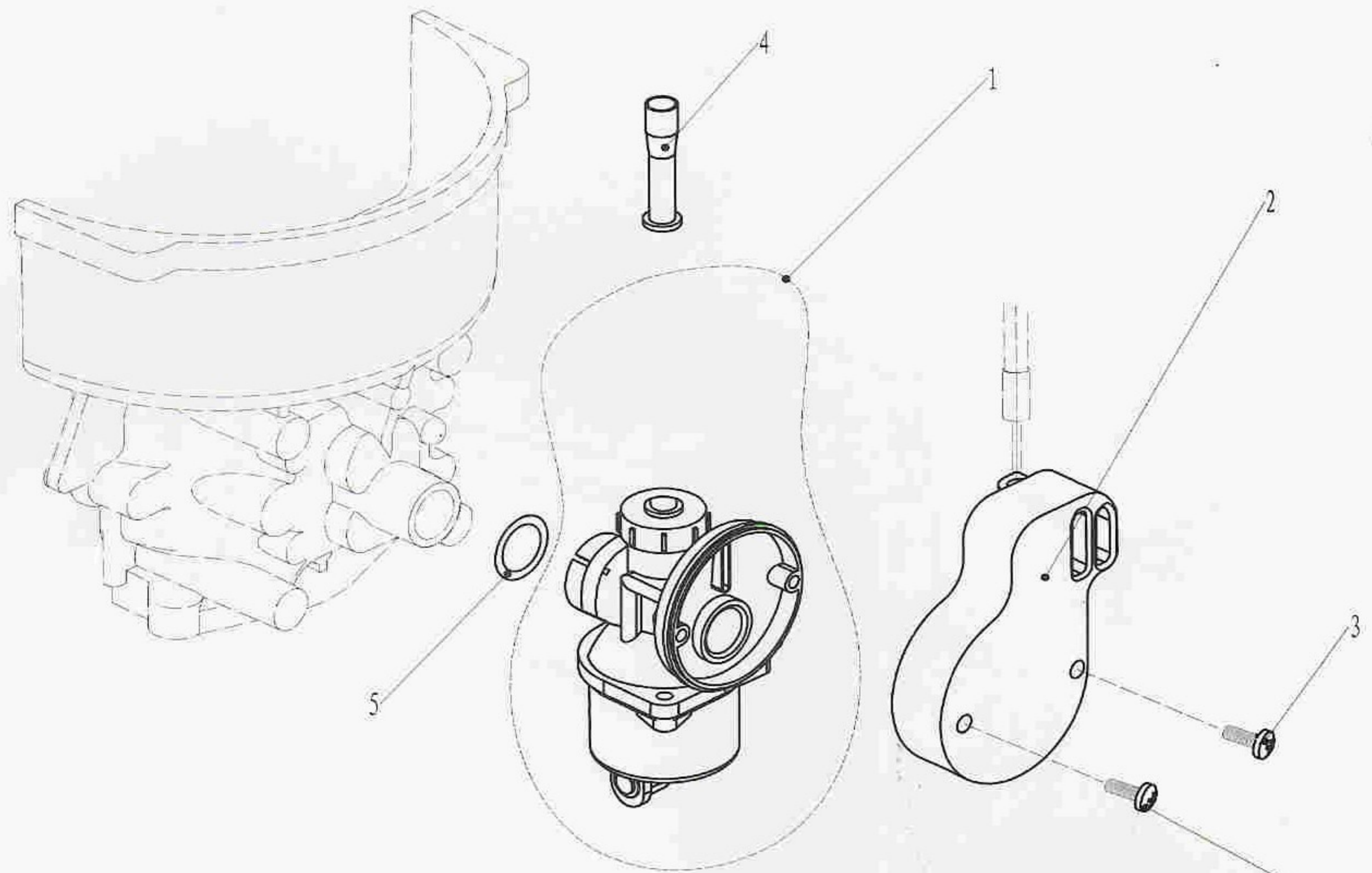
SN. 参照号码	PART NO. 零件编号	DESCRIPTION 零件名称(中文)	DESCRIPTION 零件名称(英文)	QTY 数量					REMARKS 备注
1	F4-04120100	油箱盖组件	TANK COVER ASSY	1					
2	F4-04120103	防脱落扭簧	SPRING , PREVENT DESQUAMATING	1					
3	F4-04120105	防脱落卡片	SHEET METAL , PREVENT DESQUAMATING	2					
4	F4-04120106	钢丝锁圈	EYELET , STEEL WIRE	2					
5	F4-04120104	防脱链	CHAIN , PREVENT DESQUAMATING	1					
6	F2.6-04000011	油箱口减震器	WASHER , DAMPER	1					
7	T3.6-04050001	油箱	FUEL TANK , INNER	1					
8	F4-04120002	油箱减震器	DAMPER , FUEL TANK A	2					
9	T3.6-04000010	油箱衬管	TUBE, DAMPER	2					
10	T2.6-04000034	油箱减震圈B	DAMPER , FUEL TANK B	1					
11	GB/T5783-2000	六角螺栓M6x25	HEXAGON BOLT M6x25	2					
12	GB/T97.1-85	平垫圈6	WASHER , PLATE 6	2					
13	F4-04120005	油箱滤油芯	FILTER , FUEL TANK	1					
14	T3.6-04000013	燃油管A	OIL TUBE A	1					
15	F4-05000010	油管夹簧A	SPRING , OIL TUBE A	1					
16	F2.6-04000030	油管夹簧C	SPRING , OIL TUBE C	1					

零部件名称:

进气系统

PARTS NAME:

INTAKE



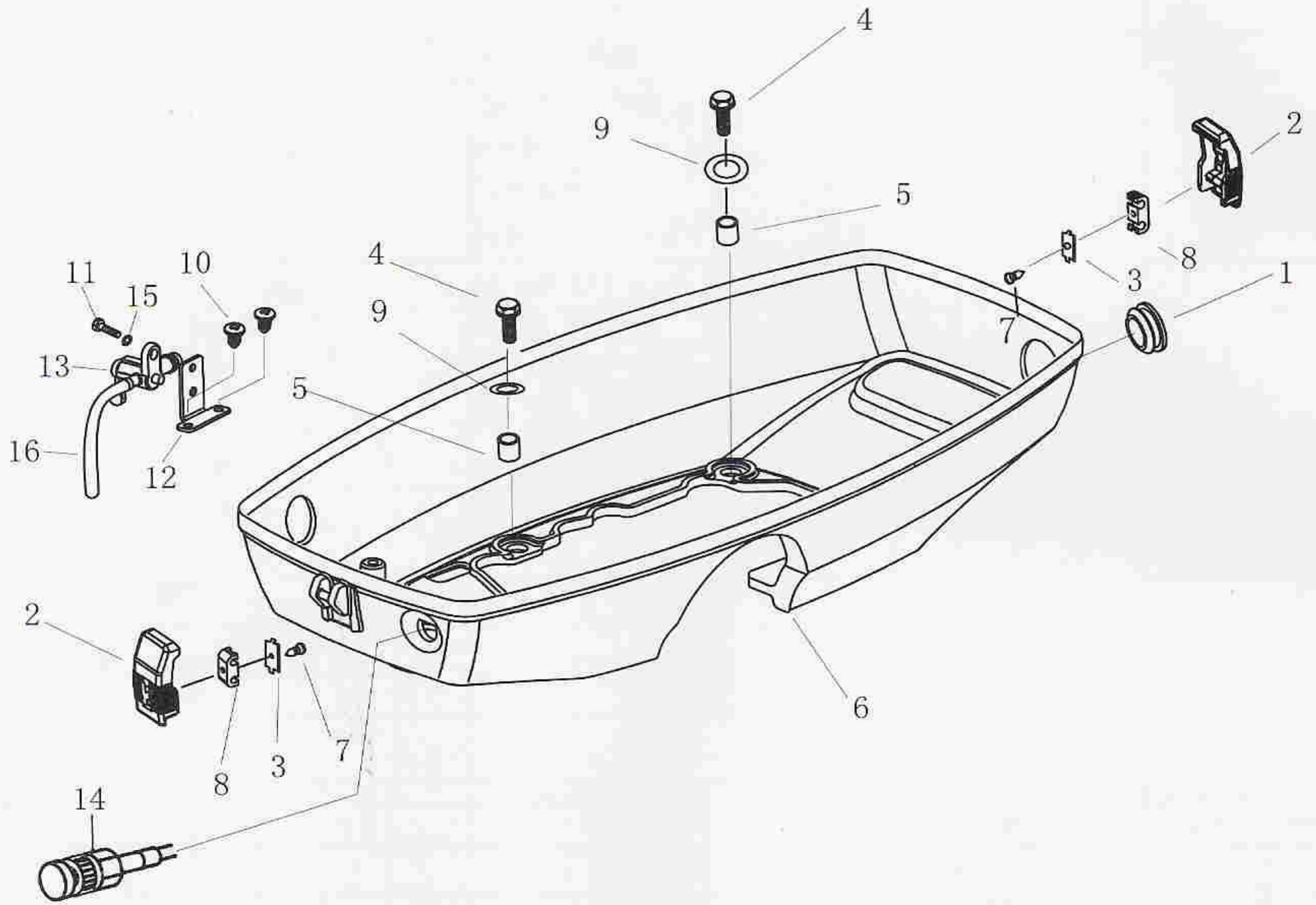
SN. 参照号码	PART NO. 零件编号	DESCRIPTION 零件名称(中文)	DESCRIPTION 零件名称(英文)	QTY 数量				REMARKS 备注
1	T3.6-04000500	化油器组件	CARBURETOR ASS'Y	1				
2	T3.6-04000008	进气消音器	SILENCER , INTAKE	1				
3	GB/T818-2000	十字槽盘头螺钉M4×25	SCREW , PAN HEAD	2				
4	T3.6-04000012	化油器护套	BUSH , CARBURETOR	1				
5	T3.6-04000501	化油器O形圈	O-RING , CARBURETOR	1				

零部件名称:

底罩

PARTS NAME:

BOTTOM COWLING



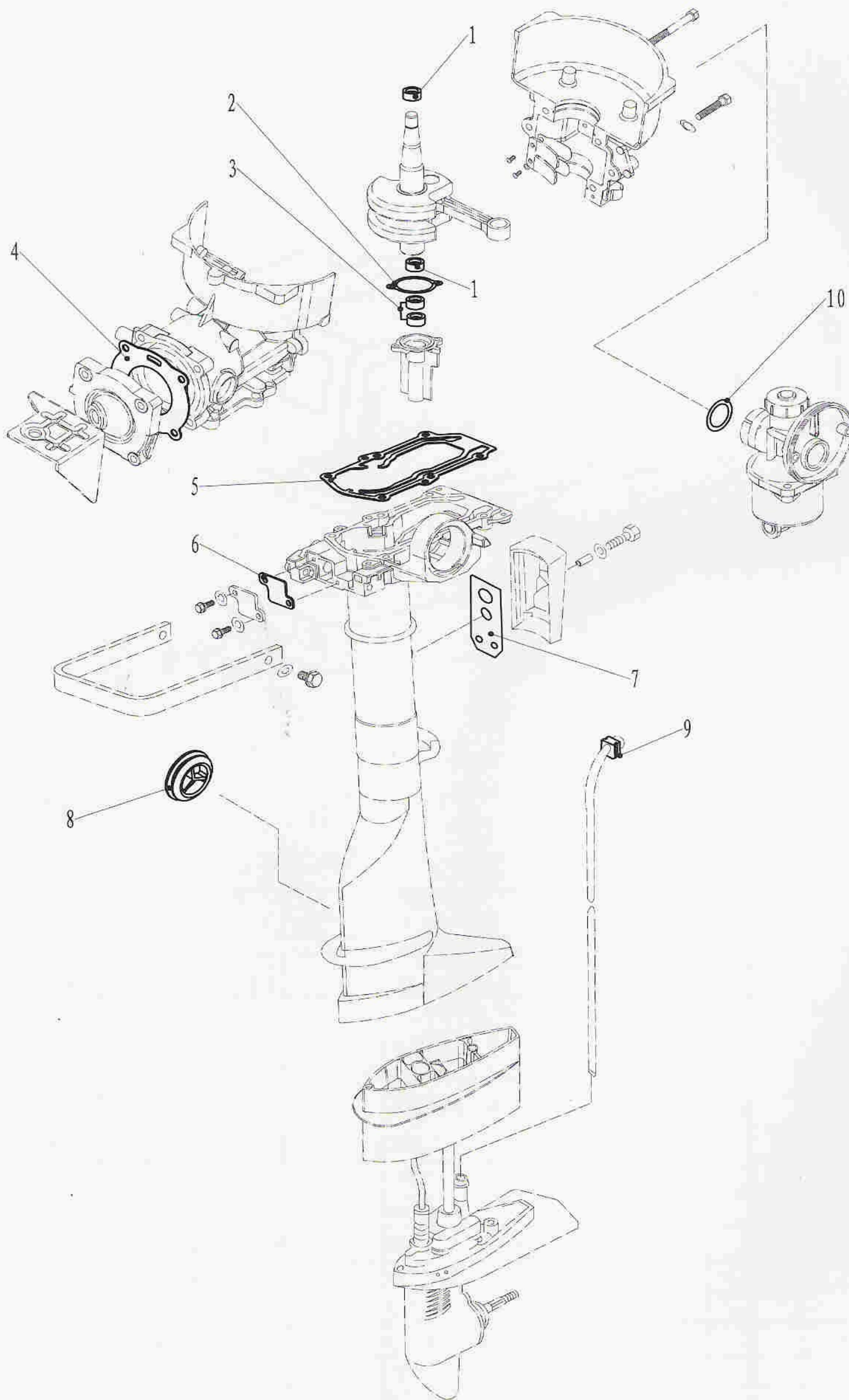
SN. 参照号码	PART NO. 零件编号	DESCRIPTION 零件名称(中文)	DESCRIPTION 零件名称(英文)	QTY 数量				REMARKS 备注
1	T3.6-05000003	圆形堵塞	RUBBER PLUG, CIRCULAR	1				
2	F2.6-05000008	顶罩锁紧钩	HOOK, LOCKING	2				
3	F2.6-05000010	金属连接杆	METALLIC LINK ROD	2				
4	GB/T5783-2000	六角螺栓M6x16	BOLT M6X16	4				
5	T3.6-05000002	底罩垫管	TUBE, BOTTOM COWLING	4				
6	T3.6-05000001	底罩	BOTTOM COWLING	1				
7	GB/T845-85	十字槽盘头自攻螺钉ST2.9x6.5	SCREW, TAPPING ST2.9x6.5	2				
8	F2.6-05000009	锁紧钩连接件	CONNECTER-ROD	2				
9	GB/T96-85	平垫圈6	WASHER 6	4				
10	GB/T845-85	十字槽盘头自攻螺钉ST4.8x9.5	SCREW, TAPPING ST4.8x9.5	2				
11	GB/T5783-2000	六角螺栓M5x10	BOLT M5X10	1				
12	T3.6-05000101	油开关固定板	PLAT, OIL SWITH	1				
13	T3.6-05000100	油开关组件	OIL SWITH ASSY	1				
14	T3.6-05000200	阻风门组件	CHOKE ASSY	1				
15	GB/T97.1-85	平垫圈5	WASHER 5	1				
15	T3.6-05000005	燃油管B $\phi 10 \times \phi 5$	OIL TUBE B	1				

零部件名称:

修理套件 1

PARTS NAME:

REPAIR KIT 1



零件手册

PAGE 25 OF 27

零部件名称:

修理套件 1

PARTS NAME:

REPAIR KIT 1

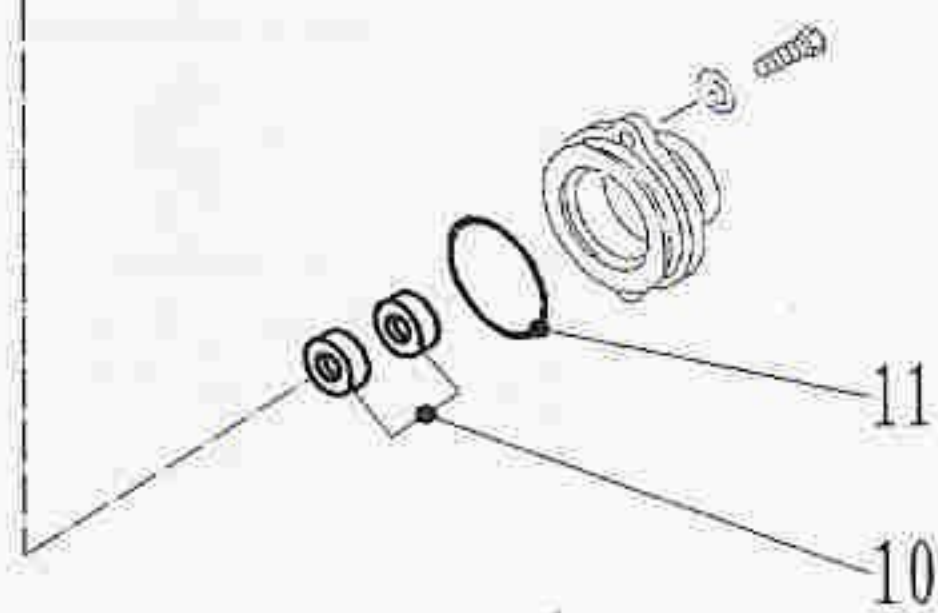
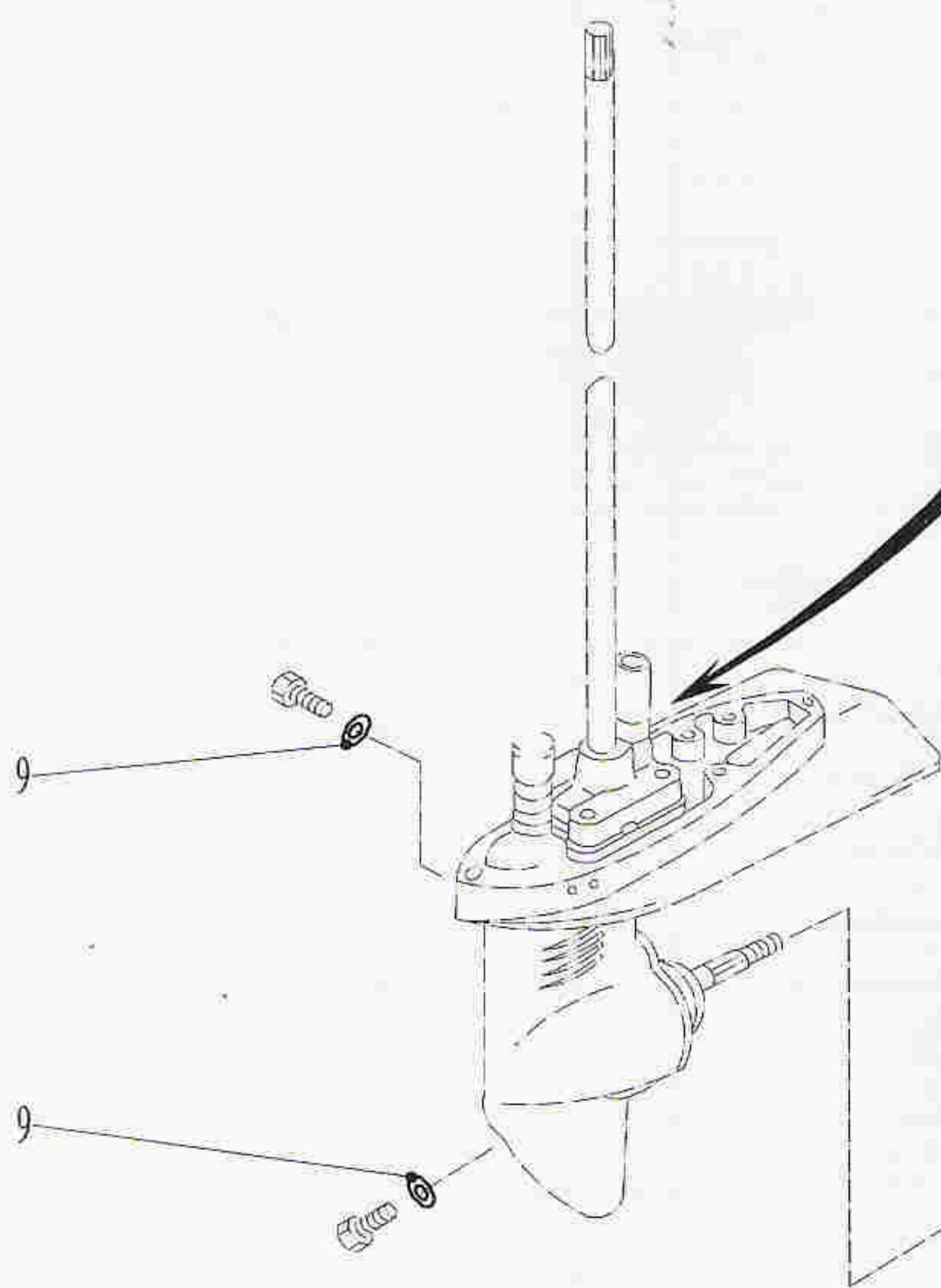
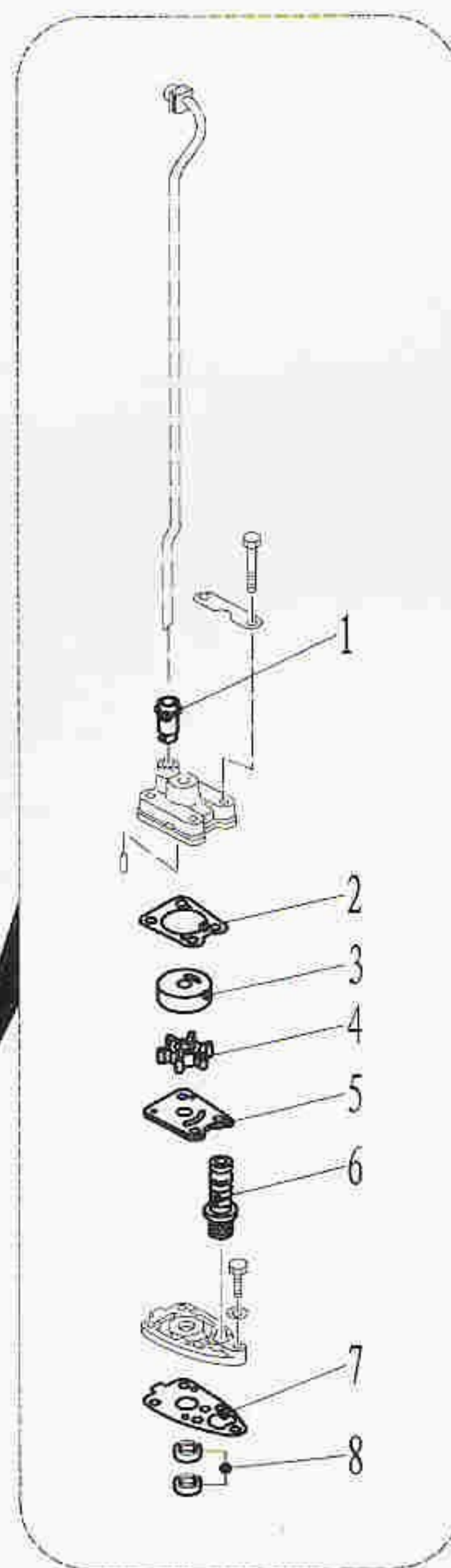
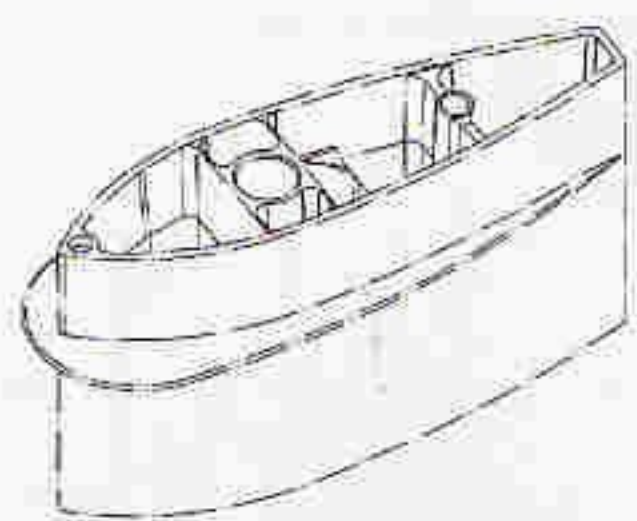
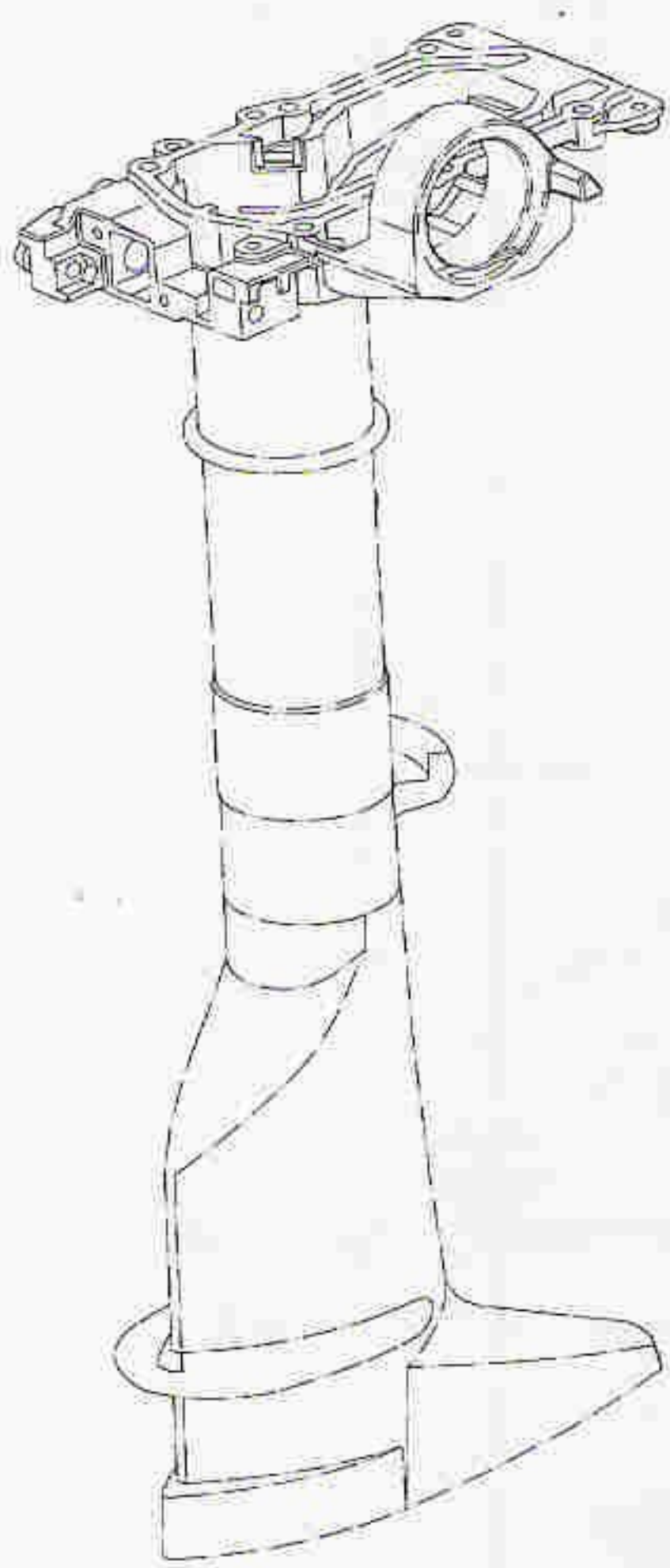
SN. 参照号码	PART NO. 零件编号	DESCRIPTION 零件名称(中文)	DESCRIPTION 零件名称(英文)	QTY 数量					REMARKS 备注
1	T3.6-04010002	曲轴油封 20×42×8	OIL SEAL	2					
2	T3.6-04000004	油封壳体密封垫	GASKET, SHELL OIL SEAL	1					
3	F4-04060004	驱动轴上油封10.8×21×7	OIL SEAL	4					
4	T3.6-04000001	缸头复合垫	GASKET, CYLINDER HEAD	1					
5	T3.6-00000001	发动机密封垫	GASKET, ENGINE	1					
6	T3.6-02000006	盖板密封垫	GASKET, COVER	1					
7	T3.6-02000009	排气盖板垫	GASKET, EXHAUST COVER	1					
8	F4-02000012	水上装置橡胶堵头	RUBBER PLUG, UPPER	1					
9	T3.6-02000008	工形橡胶圈	I-SHAPED RUBBER BAND	1					
10	T3.6-04000501	化油器O形圈	O-RING, CARBURETOR	1					

零部件名称:

修理套件2

PARTS NAME:

REPAIR KIT 2



零件手册

PAGE 27 OF 27

零部件名称:

修理套件2

PARTS NAME:

REPAIR KIT 2

SN. 参照号码	PART NO. 零件编号	DESCRIPTION 零件名称(中文)	DESCRIPTION 零件名称(英文)	QTY 数量					REMARKS 备注
1	F4-03000021	泵壳橡胶管	RUBBER TUBE, WATER PUMP	1					
2	F4-03000018	泵壳密封垫	GASKET, WATER PUMP COVER	1					
3	F4-03000017	水泵内壳	SHELL, INNER WATER PUMP	1					
4	F4-03060000	水泵叶轮	IMPELLER, WATER PUMP	1					
5	F4-03000015	外挡板	OUT PLATE	1					
6	F4-03000014	变档橡胶护套(含弹簧)	RUBBER JACKET, SHIFT ROD	1					
7	F4-03000011	水泵座密封垫	GASKET, WATER PUMP	1					
8	F4-03000027	驱动轴下油封 10.8×21×7	OIL SEAL	2					
9	F4-03000024	注油孔螺塞垫圈	GASKET	3					
10	F4-03050002	螺旋桨轴油封 13×22×7	OIL SEAL	2					
11	JISB2401 P48	水下装置壳体盖O形圈	O-RING	1					