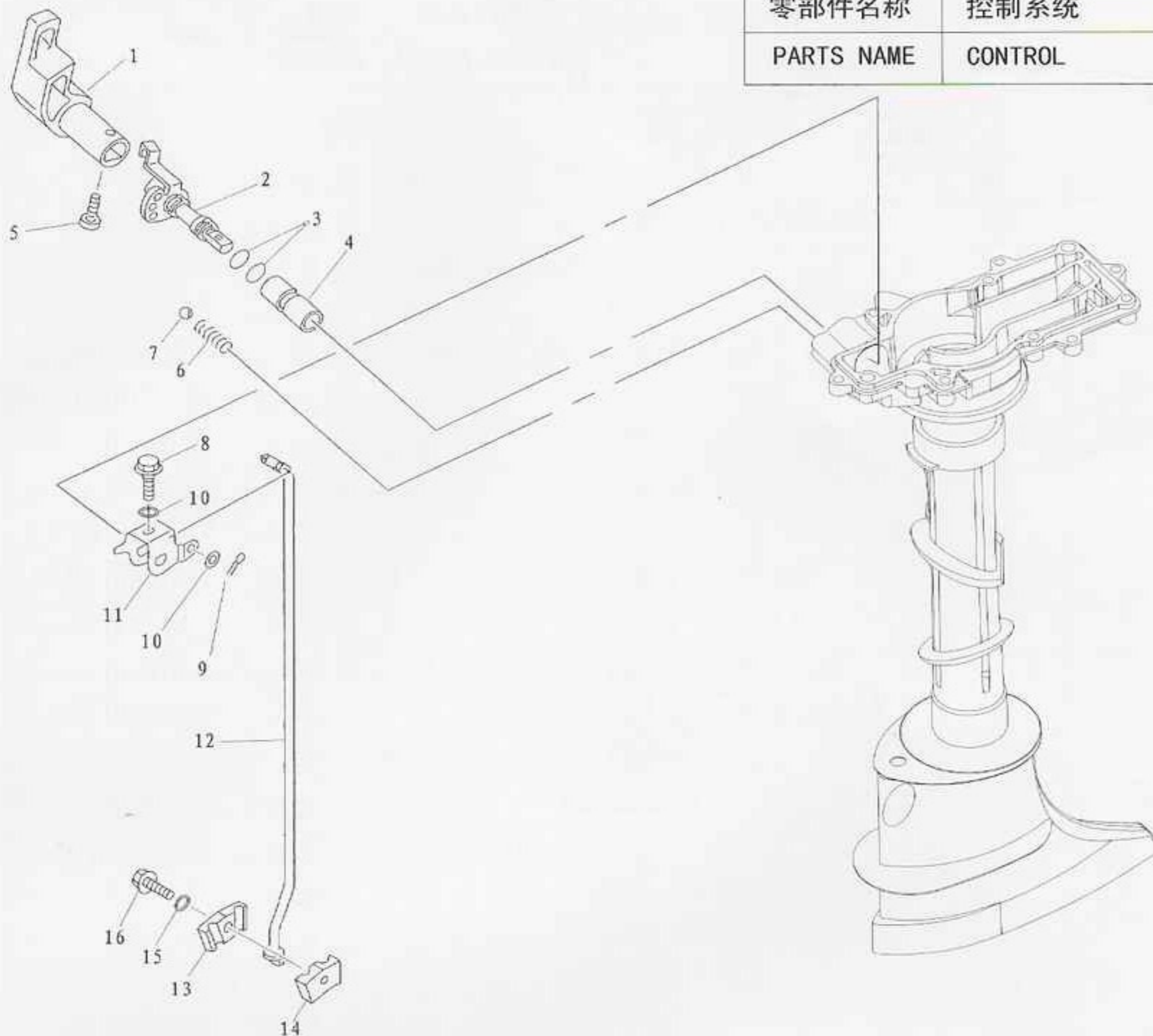


零部件名称 控制系统

PARTS NAME CONTROL



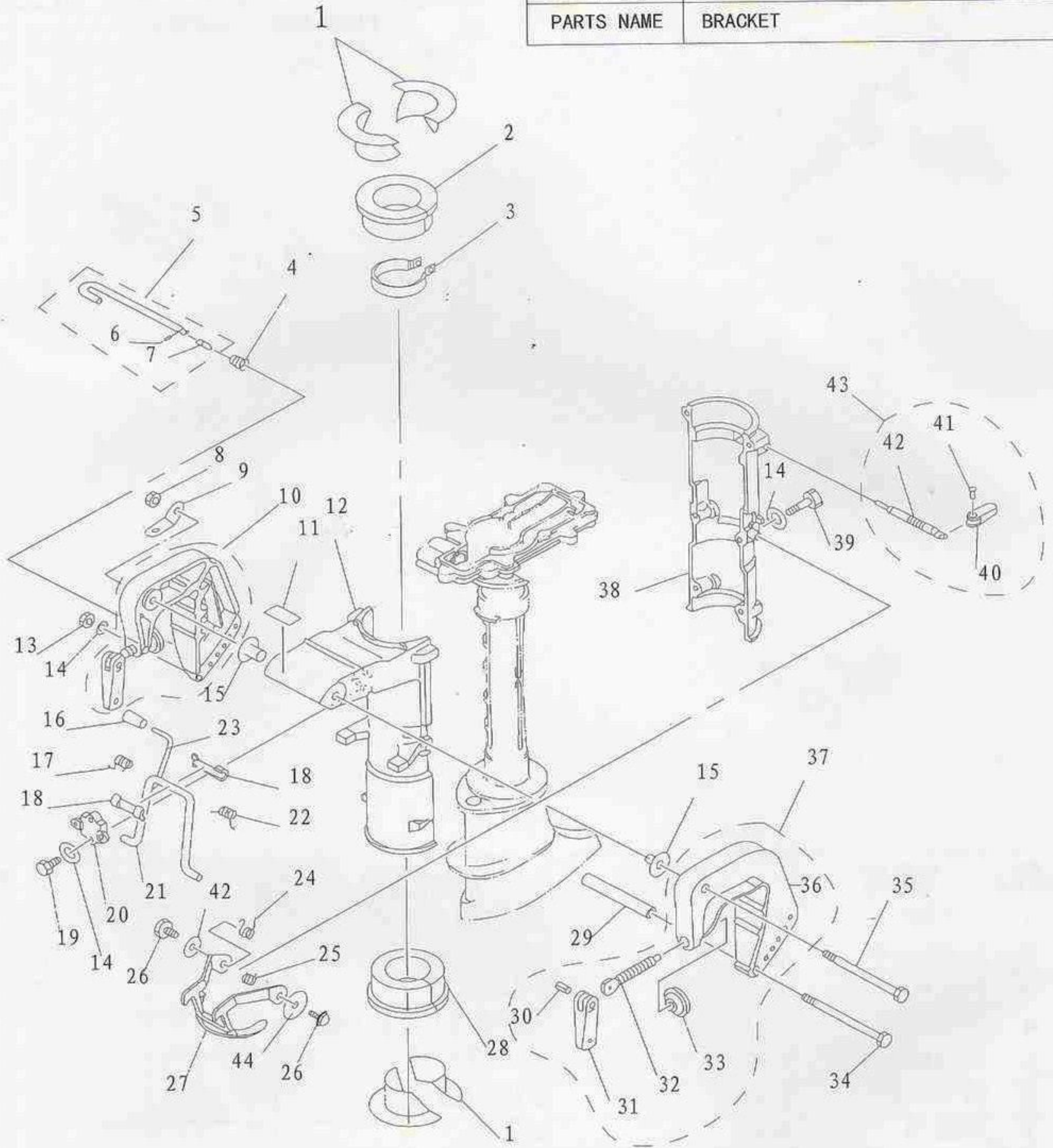
SN. 参照号码	PART NO. 零件编号	DESCRIPTION 零件名称(中文)	DESCRIPTION 零件名称(英文)	QTY 数量					REMARKS 备注
1	F4-00000007	变档手柄	HANDLE, GEAR SHIFT	1					
2	F4-02010000	变档拨叉组件	SHAFT, CHANGE	1					
3	JISB2401	"O"形密封圈P9	O-RING	2					
4	F4-02000002	水上装置壳体铜套	BUSHING, SHIFT ROD LEVER	1					
5	GB/T820-2000	十字半沉头螺钉M5x20	SCREW, OVAL HEAD	1					
6	F4-02000003	变档弹簧	SPRING, GEAR	1					
7	GB308-84	钢珠8	BALL 8	1					
8	GB/T5783-2000	六角螺栓M5x25	BOLT	1					
9	GB/T308-84	开口销1.6x12	PIN, COTTER	1					
10	GB/T97.1-85	平垫圈5	WASHER, PLATE 5	2					
11	F4-02000006	变档连杆支架	LEVER, SHIFT ROD	1					
12	F4-02000004	变档连杆	ROD, SHIFT	1					
13	F4-00000003	变档连杆连接器A	CONNECTOR, SHIFT ROD A	1					
14	F4-00000004	变档连杆连接器B	CONNECTOR, SHIFT ROD B	1					
15	F4-00000005	大垫圈	BIG, WASHER	1					
16	GB/T5284-86	六角头螺栓M6x20	BOLT	1					

零部件名称

托架

PARTS NAME

BRACKET



SN. 参照号码	PART NO. 零件编号	DESCRIPTION 零件名称(中文)	DESCRIPTION 零件名称(英文)	QTY 数量	REMARKS 备注
1	F4-02000008	减震圈衬管	BUSH , SHOCK ABSORPTION	4	
2	F4-02000007	上减震圈	TOP , SHOCK ABSORPTION	1	
3	F4-02020000	水上装置锁紧圈组件	UPPER LOCKING RING ASSY	1	
4	F4-01050002	锥形弹簧	SPRING , CONICAL	1	
5	F4-01050000	角度调整杆组件	TILT ROD ASSY	1	

零部件名称

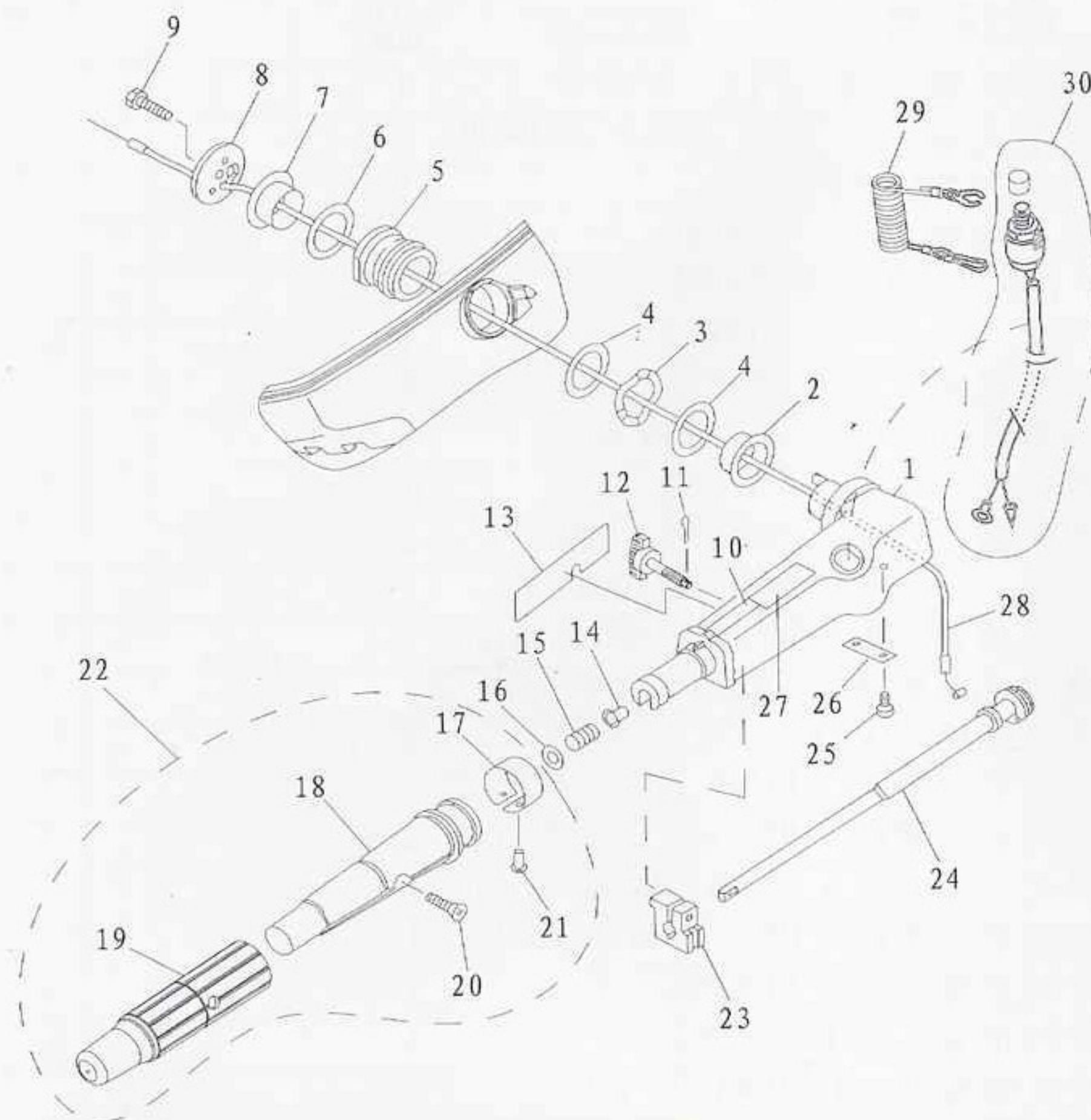
托架

PARTS NAME

BRACKET

SN. 参照号码	PART NO. 零件编号	DESCRIPTION 零件名称(中文)	DESCRIPTION 零件名称(英文)	QTY 数量					REMARKS 备注
6	GB/T879-86	弹性圆柱销3×8	PIN , SPRING	1					
7	F4-01050003	防脱落支脚	NOG , PREVENTED UNLOCK	1					
8	GB/T889.1-2000	非金属嵌件六角锁紧螺母M8	NUT	1					
9	F4-01000002	双孔固定板	PLATE	2					
10	F4-01020000	夹紧托架(左)组件	BRACKET LEFT ASSY	1					
11	F4-08000108	标贴8	MARK 8	1					
12	F4-01030001	旋转支架座	BRACKET , SWIVEL	1					
13	GB/T6170-86	六角螺母M6	HEXAGON NUT	1					
14	GB/T97.1-85	平垫圈6	WASHER	11					
15	F4-01000003	尼龙垫圈	WASHER , NYLON	2					
16	F4-01030103	手柄套	SHEATH HANDLE	1					
17	F4-01030003	支撑架扭簧(左)	SPRING , TORSION (LEFT)	1					
18	F4-01030002	支撑架尼龙衬套	BUSHING , NYLON	2					
19	GB/T5783-2000	六角头螺栓M6×20	HEXAGON BOLT	2					
20	F4-01030005	支撑架固定盖	FIXED COVER , BRACKET	1					
21	F4-01030101	角度定位支撑架	BRACKET , TILT LOCK	2					
22	F4-01030004	支撑架扭簧(右)	SPRING , TORSION (RIGHT)	1					
23	F4-01030102	支撑架定位手柄	ORIENTATION HANDLE	1					
24	F4-01000006	锁紧钩扭簧(左)	SPRING	1					
25	F4-01000007	锁紧钩扭簧(右)	SPRING	1					
26	GB/T5783-2000	六角头螺栓M6×12	HEXAGON BOLT	2					
27	F4-01070000	起翘锁紧钩组件	TILT LOCKED CLASP ASSY	1					
28	F4-02000009	下减震圈	BOTTOM ABSORBITION ASSY	1					
29	F4-01000004	螺栓垫管	BUSHER , BOLT	1					
30	F4-01010005	艀板夹紧手柄铆钉	RIVET , CLAMP HANDLE	2					
31	F4-01010004	艀板夹紧手柄	CLAMP SHIPBOARD HANDLE	2					
32	F4-01010002	艀板夹紧螺杆	CLAMP BOLT	2					
33	F4-01010003	艀板夹紧圆盘	CLAMP PLATE	2					
34	GB/T5782-2000	六角螺栓M6×120	HEXAGON BOLT	1					
35	GB/T5782-2000	六角螺栓M8×135	HEXAGON BOLT	1					
36	F4-01010001	夹紧托架(右)	BRACKET , CLAMP (RIGHT)	1					
37	F4-01010000	夹紧托架(右)组件	BRACKET RIGHT ASSY	1					
38	F4-01000005	旋转支架座盖	COVER , SWIVEL BRACKET	1					
39	GB/T5782-86	六角螺栓 M6x35	HEXAGON BOLT	6					
40	F4-01060002	锁紧手柄	CLAMP HANDLE	1					
41	GB/T875-86	扁平头半空心铆钉φ4x11	RIVET	1					
42	F4-01060001	锁紧螺杆	LOCKED SCREW	1					
43	F4-01060000	锁紧手柄组件	LOCKED HANDLE ASSY	1					
44	GB/T96-1985	大垫圈	BIG WASHER	2					

零部件名称	操舵系统
PARTS NAME	STEERING



SN. 参照号码	PART NO. 零件编号	DESCRIPTION 零件名称(中文)	DESCRIPTION 零件名称(英文)	QTY 数量	REMARKS 备注
1	F4-01090001	操舵手柄	HANDLE, STEERING	1	
2	F4-01000009	手柄衬套A	BUSGING, HANDTE A	1	
3	F4-01000012	手柄衬套波形垫圈	BUSH	1	
4	F4-01000010	衬套垫圈B	WASHER, BUSHING B	2	
5	F4-05000014	操舵手柄减震器	BUSHING, RABBER	1	
6	F4-01000011	衬套垫圈A	WASHER BUSHING A	1	
7	F4-01000008	操舵手柄衬套B	BUSHING	1	
8	F4-01000014	操舵手柄盖板	COVER, HANDLE STEERING	1	
9	GB/T5783-2000	六角头螺栓M8x25	BOLT	1	
10	F4-08000104	标贴4	MARK 4	1	
11	GB/T91-86	开口销 φ 1.6x12	PIN, COTTER	1	
12	F4-01090200	阻力调整旋钮组件	BOLT, FRICTION ADJUSTING	1	
13	F4-08000103	标贴3	MARK 3	1	
14	F4-01090006	衬套	BUSH	1	
15	F4-01090007	压缩弹簧	SPRING, COMPRESSION	1	
16	GB/T848-85	小垫圈10	WASHER, PLATE	1	
17	F4-01090303	油门标志牌	INDICATOR THROTTLE	1	
18	F4-01090301	操舵手柄塑胶套	GRIP, STEERING HARDLE	1	
19	F4-01090302	操舵手柄橡胶套	RUBBER, HANDLE	1	
20	GB/T820-85	十字槽半沉头螺钉M5x24	SCREW	1	

F4 (F5) 零件手册

PAGE 05 OF 23

零部件名称

操舵系统

PARTS NAME

STEERING

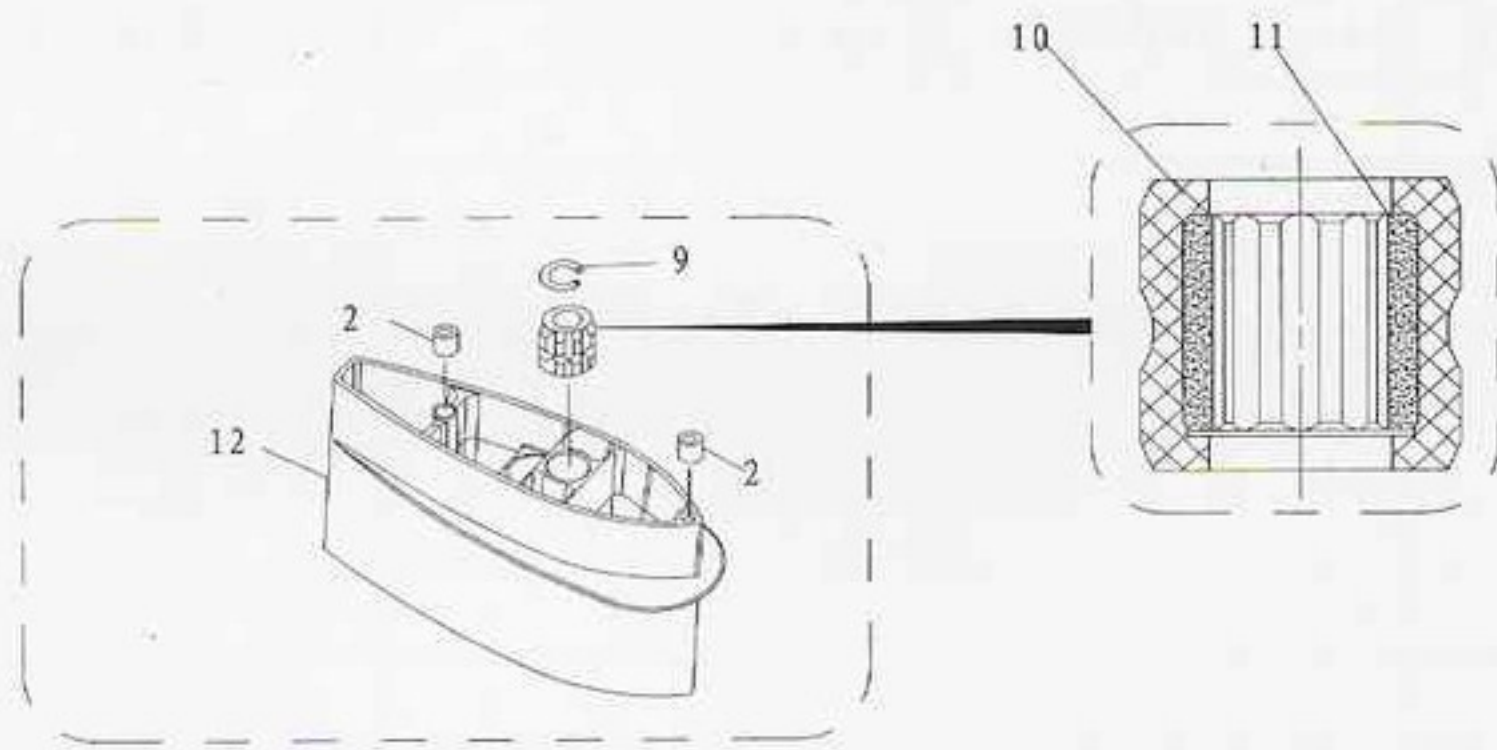
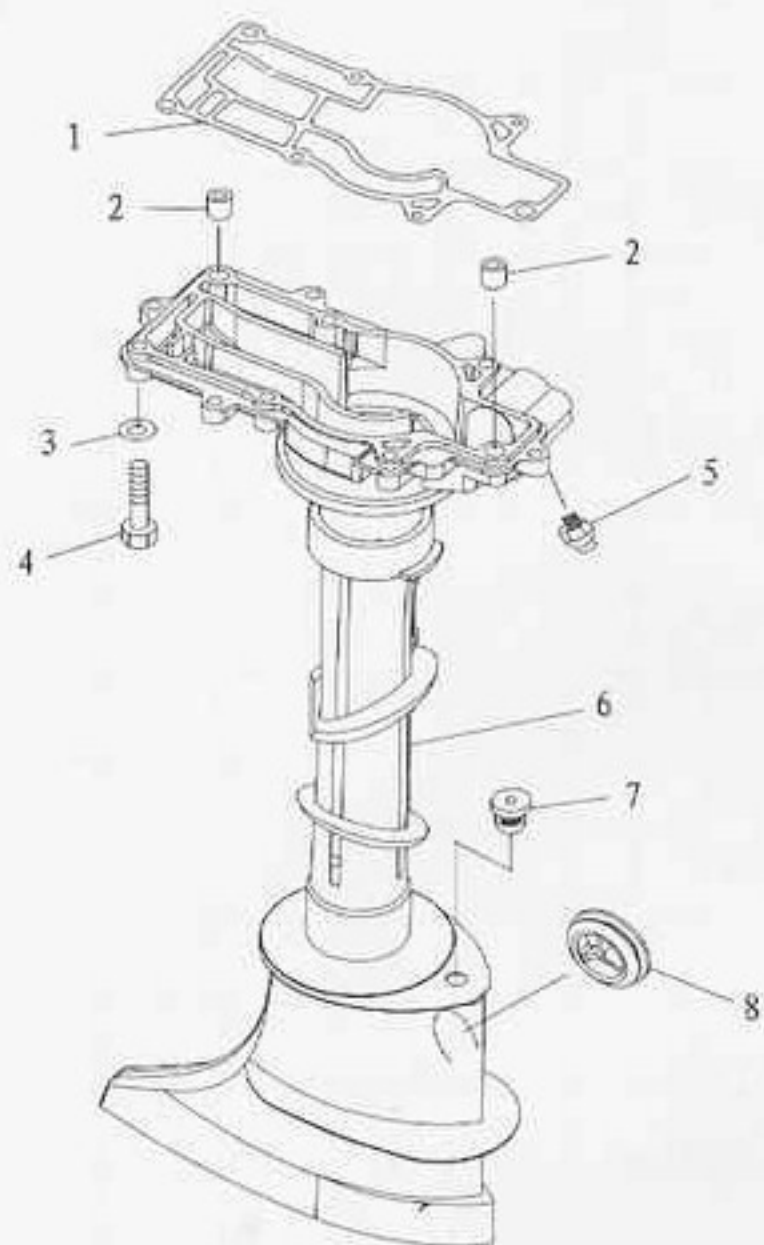
SN. 参照号码	PART NO. 零件编号	DESCRIPTION 零件名称(中文)	DESCRIPTION 零件名称(英文)	QTY 数量					REMARKS 备注
21	GB/T827-86	标牌铆钉2x5	RINET	1					
22	F4-01090000	操舵手柄组件	STEERING HANDLE ASSY	1					
23	F4-01090003	操舵手柄握把摩擦块	FRICTION	1					
24	F4-01090100	节气门杆组件	LEVER, THROTLLE	1					
25	GB/T818-85	十字槽盘头螺钉M5x12	SCREW, PAN HEAD	2					
26	F4-01090002	节气门杆固定板	STAY	1					
27	F4-08000105	标志牌5	MARK 5	1					
28	F4-01090008	油门钢索组件	THROTTLE CABLE ASSY	1					
29	F4-01090401	引擎停止安全索	STOPER, HANG ROPE ASSY	1					
30	F4-01090400	急停开关组件	ENGINE STOP SWITCH ASSY	1					

零部件名称

水上装置壳体

PARTS NAME

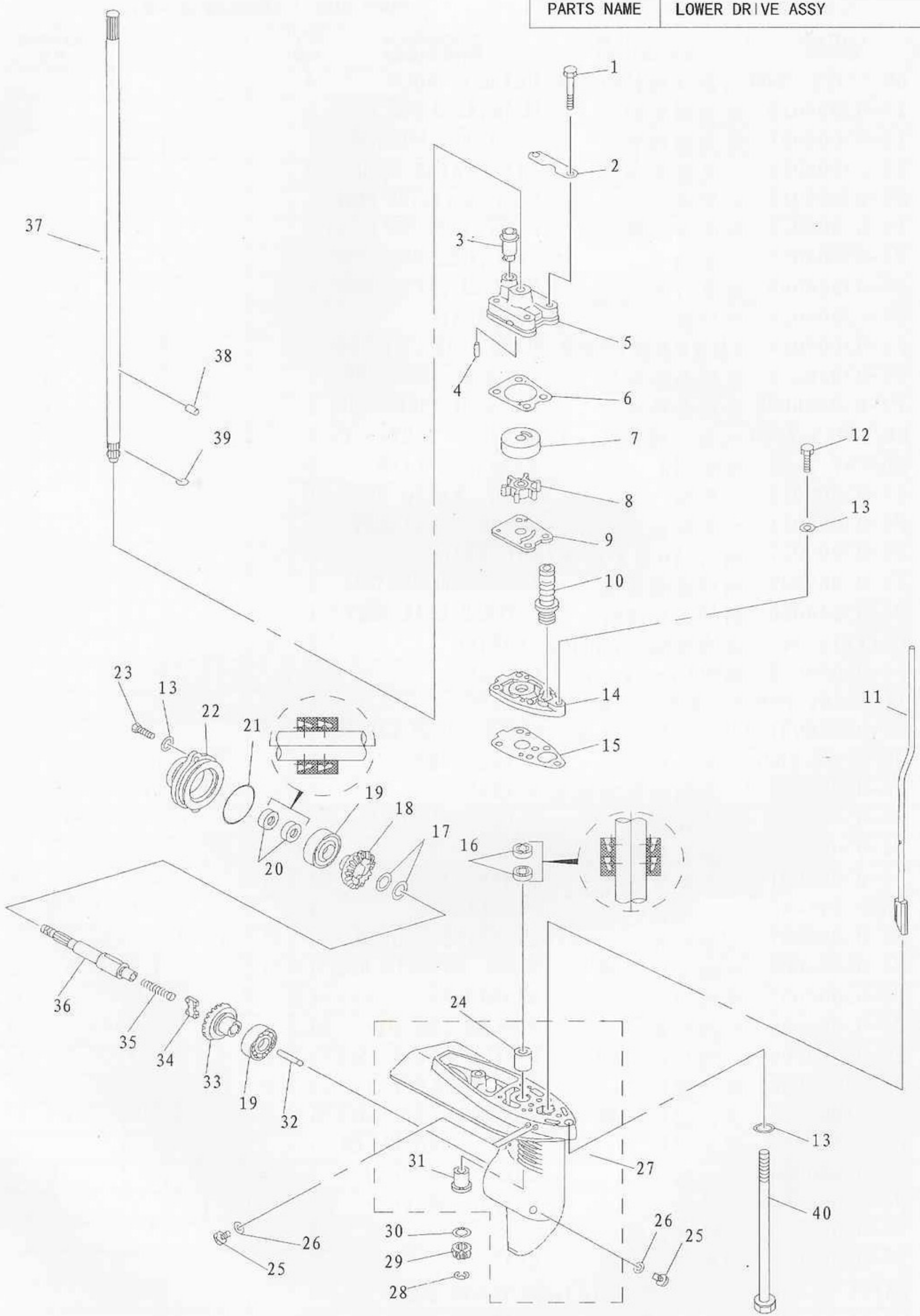
UPPER CASING



SN. 参照号码	PART NO. 零件编号	DESCRIPTION 零件名称(中文)	DESCRIPTION 零件名称(英文)	QTY 数量				REMARKS 备注
1	F4-00000006	发动机密封垫	GASKET , ENGINE	1				
2	F4-00000001	空心定位销	PIN , HOLLOW	4				
3	GB/T97. 1-85	平垫圈6	WASHER	7				
4	GB/T5284-86	六角头螺栓M6 × 35	HEXAGON BOLT	7				
5	JB/T7940. 1-95	直通式压注油杯M6	GREASE CUP	1				
6	F4-02000001	水上装置壳体	CASING , UPPER	1				
7	F4-02000011	变档轴密封圈	WASHER , SHIFT ROD	1				
8	F4-02000012	水上装置橡胶堵头	RUBBER PLUG , UPPER	2				
9	GB/T 893. 1-1986	孔用弹性挡圈22	CIRCLIP	1				L
10	F4-02030003	驱动轴橡胶衬套	RUBBER BUSHING	1				L
11	F4-02030002	驱动轴衬套	BUSHER , DRIVE SHAFT	1				L
12	F4-02030001	接长体	EXTENSION	1				L

零部件名称 水下驱动组件

PARTS NAME LOWER DRIVE ASSY

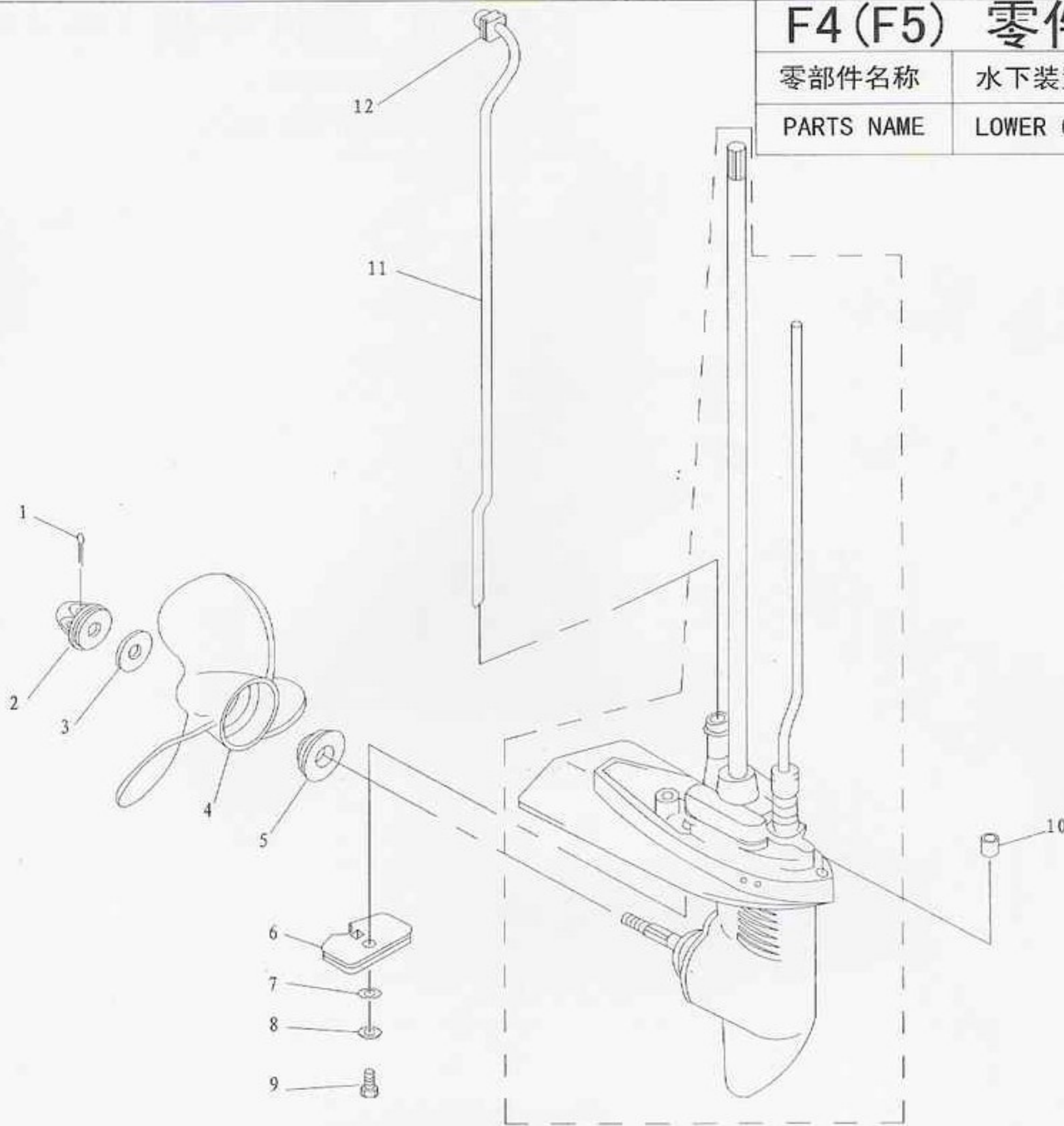


零部件名称	水下驱动组件
PARTS NAME	LOWER DRIVE ASSY

SN. 参照号码	PART NO. 零件编号	DESCRIPTION 零件名称(中文)	DESCRIPTION 零件名称(英文)	QTY 数量					REMARKS 备注
	GB/T5782-2000	六角头螺栓M6 × 45	HEXAGON BOLT	4					
2	F4-03000020	泵壳固定板	PLATE , WATER PUMP FIXED	2					
3	F4-03000021	泵壳橡胶管	RUBBER TUBE , WATER PUMP	1					
4	F4-03000013	水泵座定位销	PIN , WATER PUMP	2					
5	F4-03000019	水泵壳	HOUSING , WATER PUMP	1					
6	F4-03000018	泵壳密封垫	GASKET , WATER PUMP COVER	1					
7	F4-03000017	水泵内壳	COVER , INNER WATER PUMP	1					
8	F4-03060000	水泵叶轮	IMPELLER , WATER PUMP	1					
9	F4-03000015	外档板	OUT PLATE	1					
10	F4-03000014	变档橡胶护套(含弹簧)	RUBBER JACKET , SHIFT ROD	1					
11	F4-03020000	变档凸轮组件	CAM ASSY , SHIFT ROD	1					L
	F4-03020000S	变档凸轮组件	CAM ASSY , SHIFT ROD	1					S
12	GB/T5783-2000	六角头螺栓M6 × 25	HEXAGON BOLT	1					
13	GB/T97.1-85	平垫圈6	WASHER , PLATE	5					
14	F4-03000012	水泵座	BASE , WATER PUMP	1					
15	F4-03000011	水泵座密封垫	HERMETIC GASKET	1					
16	F4-03000027	油封 10.8 × 21 × 7	OIL SEAL	2					
17	F4-03000009	倒档齿轮垫圈	WASHER , REVERSE GEAR	2					
18	F4-03040000	倒档齿轮组件	REVERSE GEAR ASSY	1					
19	GB/T276-94	深沟球轴承6004C2	BEARING	2					
20	F4-03050002	油封13 × 22 × 7	OIL SEAL	2					
21	JISB2401 P48	水下装置壳体盖O形圈	O-RING	1					
22	F4-03050001	水下装置壳体盖	COVER , LOWER CASING	1					
23	GB/T5783-2000	六角头螺栓M6 × 18	HEXAGON BOLT	2					
24	F4-03000003	不带档边筒形轴承	BEARING	1					
25	F4-03000023	注油孔螺塞	PLUG , OIL HOLE	3					
26	F4-03000024	注油孔螺塞垫圈	GASKET	3					
27	F4-03000001	水下装置壳体	LOWER CASING	1					
28	GB/T-896-86	开口档圈6	CIRCLIP	1					
29	F4-03000007	主动齿轮	INITIATIVE GEAR	1					
30	F4-03000006	主动齿轮垫圈	WASHER , INITIATIVE GEAR	1					
31	F4-03000002	带档边筒形轴承	BEARING	1					
32	F4-03000008	变档柱塞	PLUGER , SHIFT	1					
33	F4-03010000	正档齿轮组件	POSITIVE GEAR ASSY	1					
34	F4-03030002	离合器块	CLUTCH BLOCK	1					
35	F4-03000003	离合器块压簧	SPRING , CLUTCH BLOCK	1					
36	F4-03030001	螺旋桨轴	SHAFT , PROPELLER	1					
37	F4-03000004	驱动轴	SHAFT , DRIVE	1					L
	F4-03000004S	驱动轴	SHAFT , DRIVE	1					S
38.	F4-03000016	叶轮定位销	PIN	2					
39	F4-03000005	轴用钢丝档圈	CLIP	1					
40	GB/T5782-2000	六角头长螺栓M6 × 167	HEXAGON BOLT	2					L
	GB/T5782-2000	六角头长螺栓M6 × 40	HEXAGON BOLT	2					S

零部件名称 水下装置壳体 & 驱动系统

PARTS NAME LOWER CASING & DRIVE



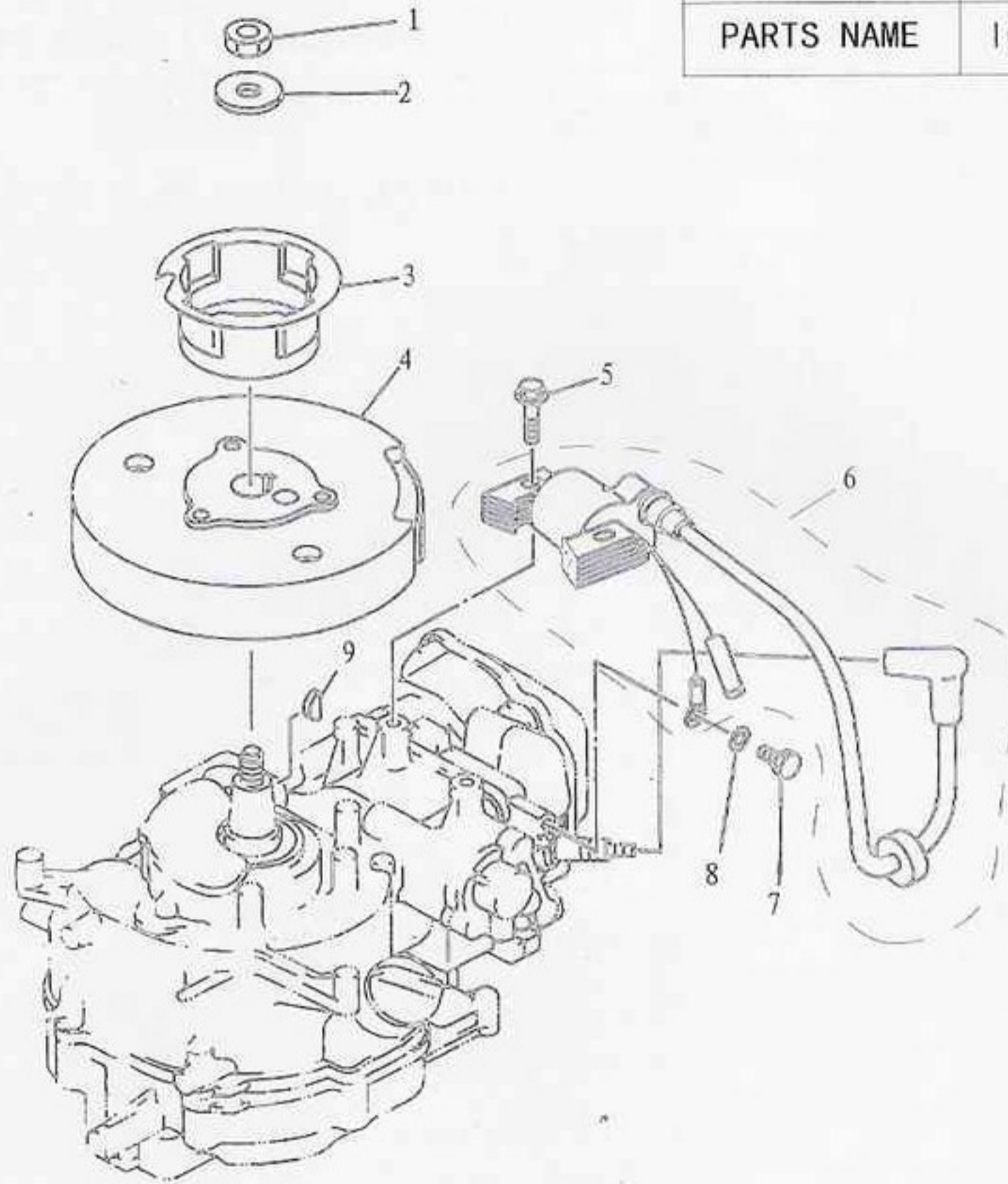
SN. 参照号码	PART NO. 零件编号	DESCRIPTION 零件名称(中文)	DESCRIPTION 零件名称(英文)	QTY 数量				REMARKS 备注
1	GB/T91-86	开口销2.5 × 30	PIN , COTTER	1				
2	F4-03080000	螺母组件	NUT ASSY	1				
3	F4-03000026	不锈钢垫片	WASHER	1				
4	F4-03070000	螺旋桨组件	PROPELLER ASSY	1				
5	F4-03000025	不锈钢垫块	SPACER	1				
6	F4-03000022	阳极	ANODE	1				
7	GB/T97.1-85	平垫圈6	WASHER , PLATE	1				
8	GB/T861.1-87	内齿锁紧垫圈6	WASHER , INTERNAL TOOTH	1				
9	GB/T5783-2000	六角头螺栓M6 × 12	HEXAGON BOLT	1				
10	F4-00000001	空心定位销	HOLLOW PIN	2				
11	F4-02040000	进水管组件	WATER TUBU ASSY	1				L
	F4-02040000S	进水管组件	WATER TUBU ASSY	1				S
12	F4-02040002	工形橡胶圈	I-SHAPED RUBBER BAND	1				

零部件名称

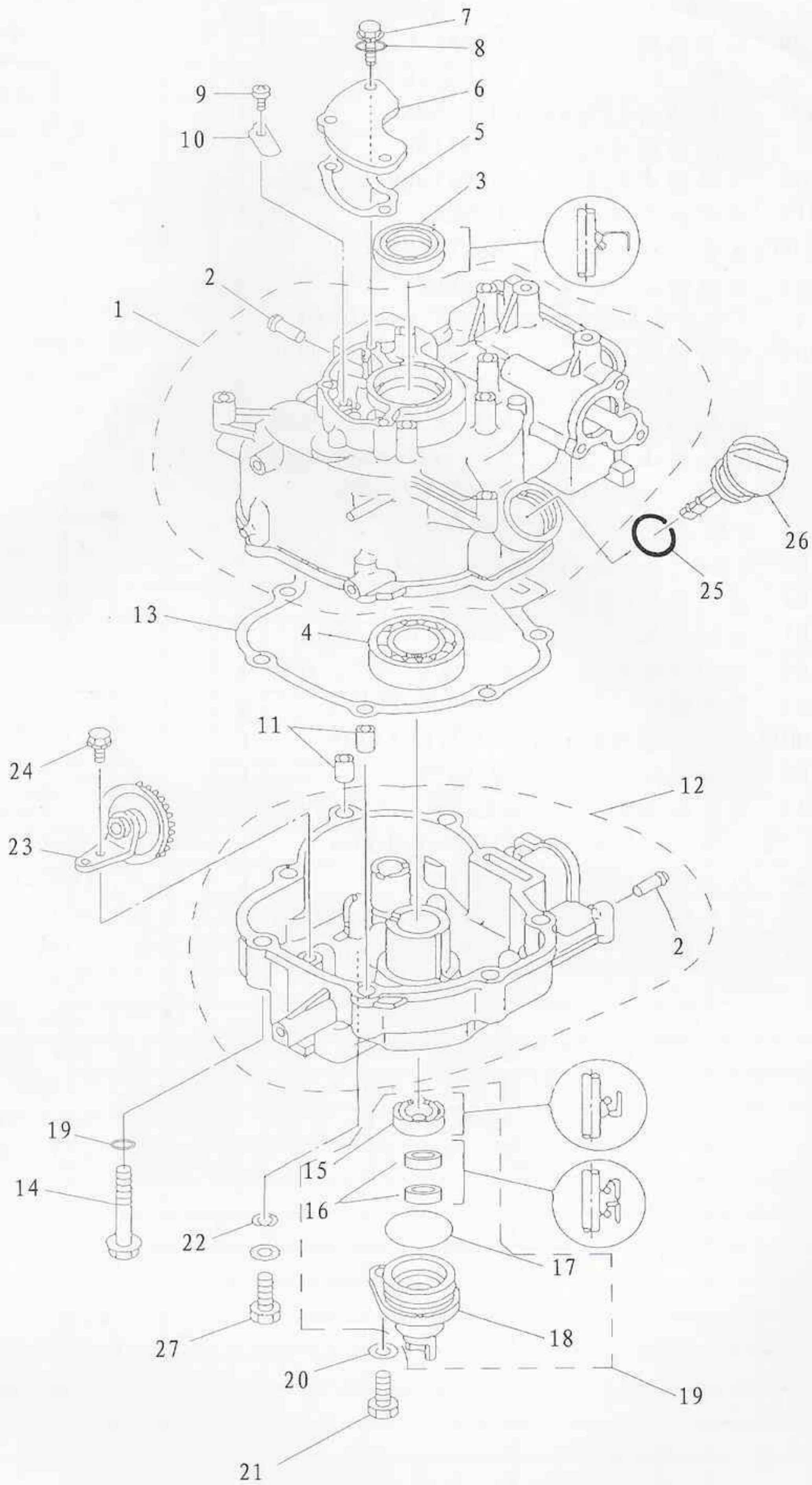
点火系统

PARTS NAME

IGNITOR ASS'Y



SN. 参照号码	PART NO. 零件编号	DESCRIPTION 零件名称(中文)	DESCRIPTION 零件名称(英文)	QTY 数量					REMARKS 备注
1	GB/T6171 86	六角螺母M10x1.25	NUT	1					
2	F4-04000021	飞轮垫圈	WASHER	1					
3	F4-04000020	起动轴套	PULLEY, STANTER	2					
4	F4-04100000	飞轮组件	FLY WHEEL	1					
5	GB/T5782-2000	六角头螺栓M6x25	BOLT	2					
6	F4-04000038	点火线圈组件	IGNITION WINDING ASSY	1					
7	GB/T5783-2000	六角头螺栓M6x10	BOLT	1					
8	GB/T97.1-85	平垫圈6	WASHER, PLATE6	3					
9	F4-04000019	半圆键	KEY	1					



零部件名称

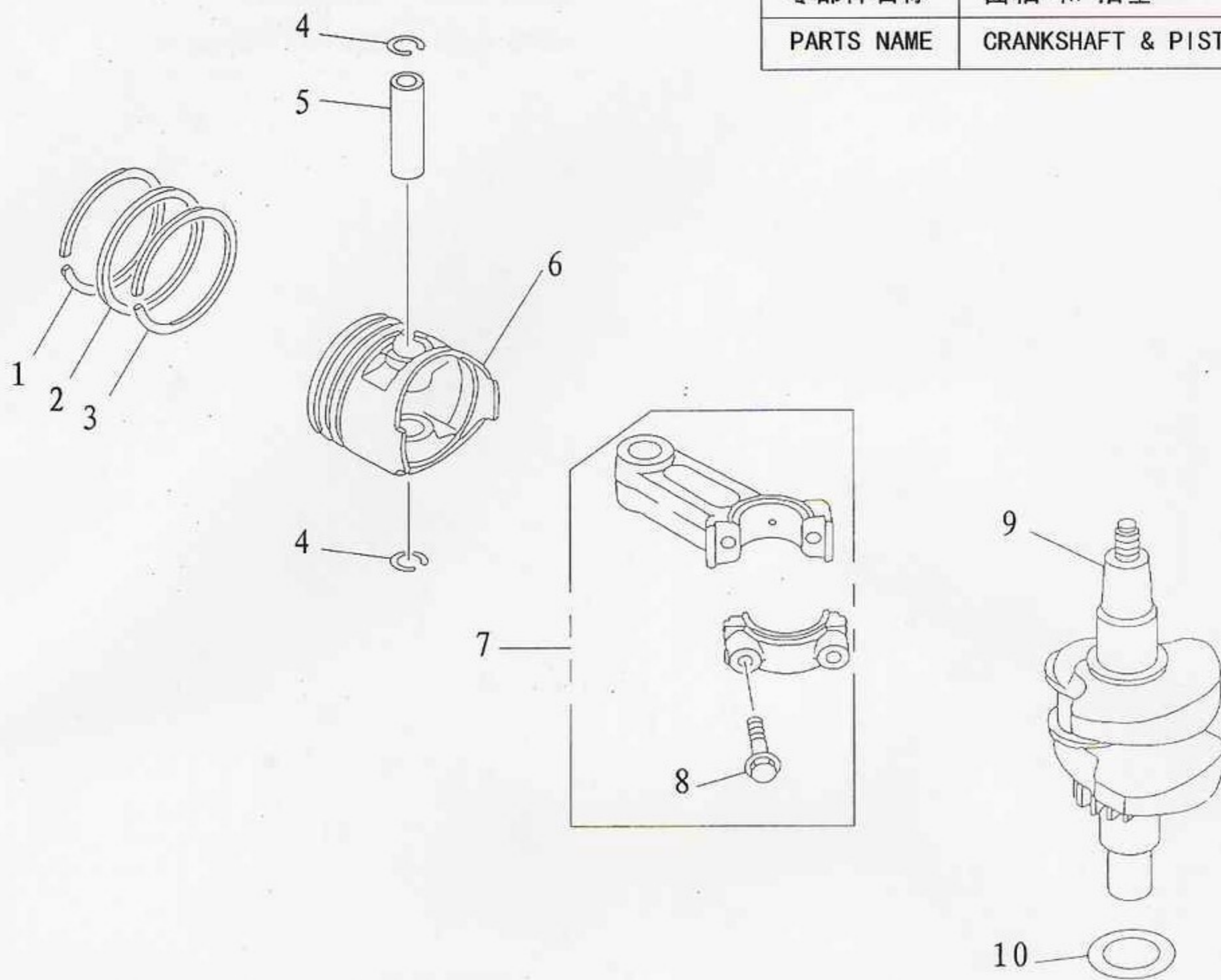
气缸&曲轴箱1

PARTS NAME

CYLINDER & CRANKCASE 1

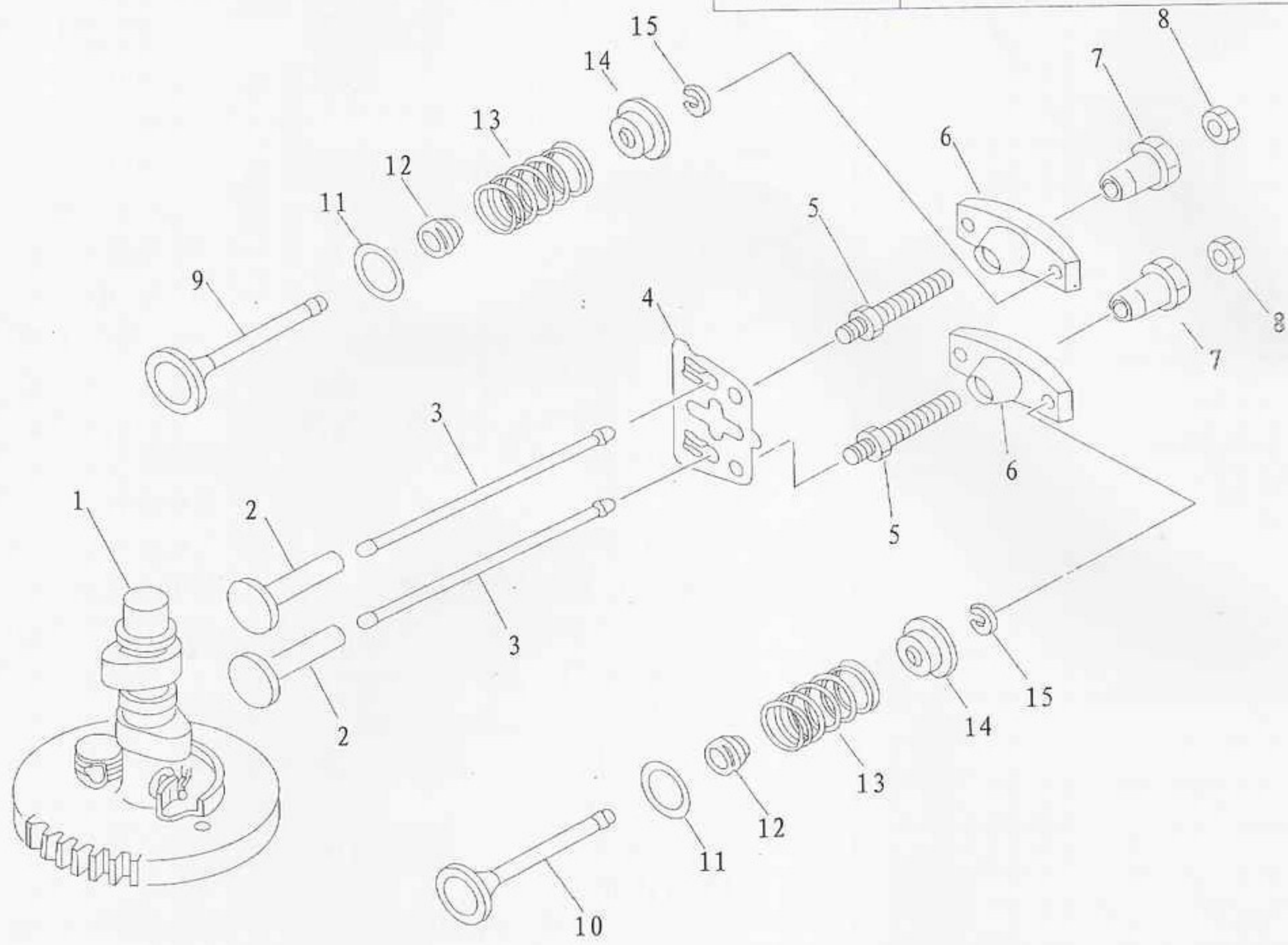
SN. 参照号码	PART NO. 零件编号	DESCRIPTION 零件名称(中文)	DESCRIPTION 零件名称(英文)	QTY 数量					REMARKS 备注
1	F4-04010100	曲轴箱体	CRANK CASE	1					
2	F4-04010002	气嘴	PIPE, JOINT	1					
3	F4-04010003	曲轴油封A25x40x5	OIL SEAL	1					
4	GB/T276-94	深沟球轴承6205C3	BEARING	1					
5	F4-04000009	呼吸器密封垫	BREATHER GASKET	1					
6	F4-04000010	呼吸器盖板	COVER	1					
7	GB/T5782-2000	六角头螺栓M6x14	BOLT, HEXAGON	3					
8	GB/T97.1-85	平垫圈6	WASHER	3					
9	GB/T818-85	十字槽盘头螺钉M4x6	SCREW, PAN HEAD	1					
10	F4-04010003	呼吸器阀片	VELVE, BREATHER FLAP	1					
11	F4-04000003	空心定位销φ10x8.4x14	HOLLOW PIN	2					
12	F4-04050001	曲轴箱盖	COVER, CRANK CASE	1					
13	F4-04000002	曲轴箱体复合垫	CRANA CASE COMPLEX GASKET	1					
14	GB/T5787-1986	六角法兰面螺栓M8x50	BOLT, HEXAGON	7					
15	F4-04060003	曲轴油封20x30x7 (B)	OIL, SEAL	1					
16	F4-04060004	驱动轴上油封10.8x21x7	OIL, SEAL	2					
17	F4-04060002	油封壳体O型圈	O-RING	1					
18	F4-04060001	油封壳体	SHELL, OIL SEAL	1					
19	F4-04060000	油封壳体组件	OIL SEAL SHELL ASSY	1					
20	GB/T97.1-85	平垫圈8	WASHER, PLATE	8					
21	GB/T5783-2000	六角头螺栓M8x20	BOLT, HEXAGON	1					
22	F4-04000006	放油螺栓密封垫	WASHER	1					
23	F4-04050000	甩油轮组件	GEAR UNIT ASSY	1					
24	GB/T5783-2000	六角头螺栓M6x12	BOLT, HEXAGON	1					
25	F4-04000008	机油盖阻油圈	O-RING	1					
26	F4-04000007	带尺机油盖	PLUG WITH DIPSTICK	1					
27	F4-04000001	放油螺栓	BOLT, DISCHARGING OIL	1					

零部件名称	曲轴 和 活塞
PARTS NAME	CRANKSHAFT & PISTON



SN. 参照号码	PART NO. 零件编号	DESCRIPTION 零件名称(中文)	DESCRIPTION 零件名称(英文)	QTY 数量					REMARKS 备注
1	F4-04020002	气环1	PISTON RING 1	1					
2	F4-04020003	气环2	PISTON RING 2	1					
3	F4-04020004	组合油环	COMBINED OIL RING	1					
4	F4-04020006	活塞销卡簧	CIRCLIP	2					
5	F4-04020005	活塞销	PIN , PISTON	1					
6	F4-04020001	活塞	PISTON	1					
7	F4-04020100	连杆组件	ROD , CONNECTING	1					
8	F4-04020103	连杆螺栓	BOLT, ROD CLEVEL	2					
9	F4-04030000	曲轴组件	CRANK ASSY	1					
10	F4-04000004	箱盖减磨片	WASHER , PLATE	1					

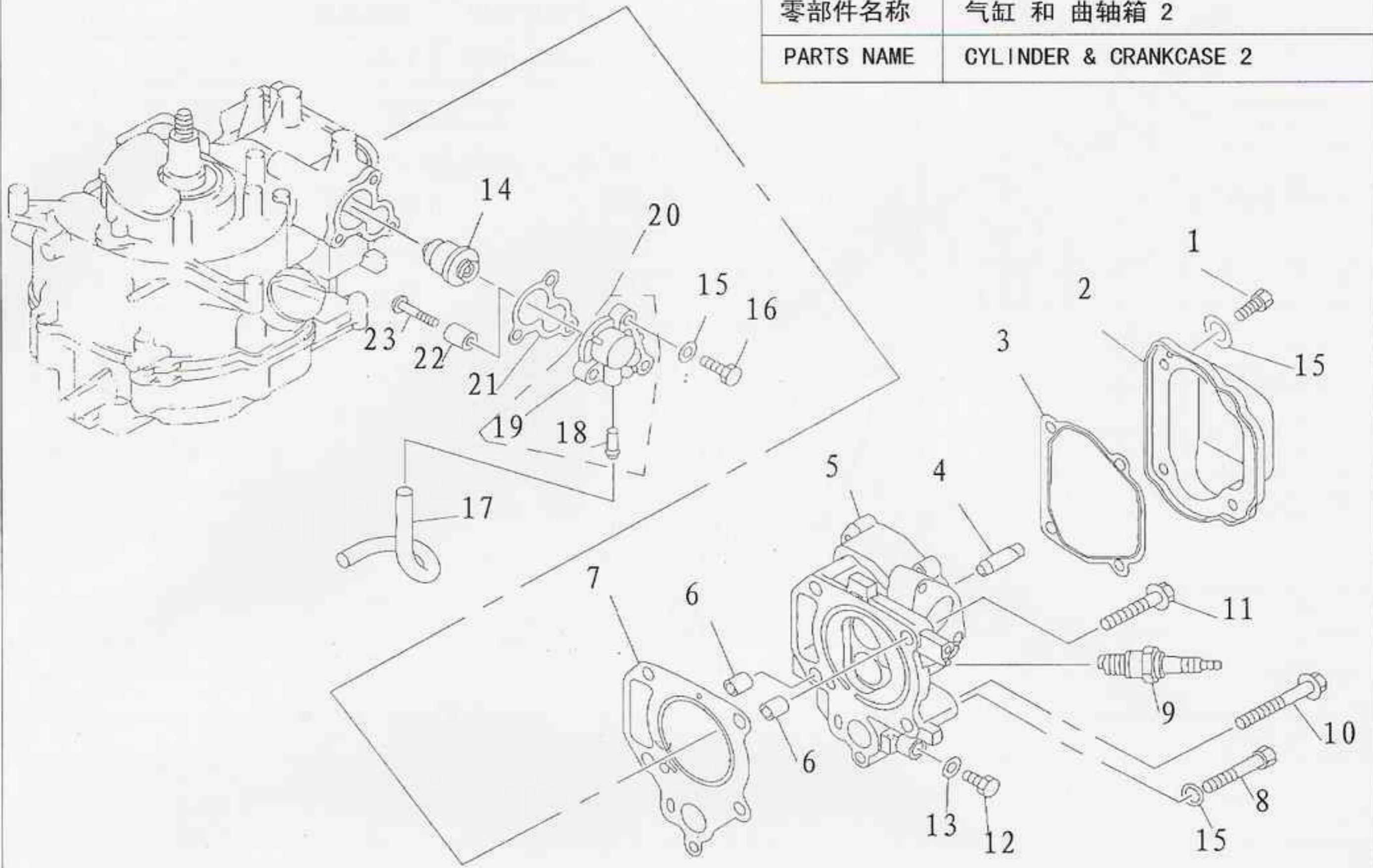
零部件名称	凸轮轴&阀门
PARTS NAME	CAMSHAFT & VALVE



SN. 参照号码	PART NO. 零件编号	DESCRIPTION 零件名称(中文)	DESCRIPTION 零件名称(英文)	QTY 数量	REMARKS 备注
1	F4-04040000	凸轮减压组件	CAMSHAFT ASSY	1	
2	PS2700. 03. 02	气门挺柱	LIFTER, VALVE	2	
3	F4-04000015	气门推杆	ROD, VALVE PUSH	1	
4	F4-04080009	导向板	PLATE, PUSH ROD	1	
5	PS2700. 04. 12	摇臂螺杆	BOLT, ROCKER ARM	2	
6	PS2700. 04. 12	气门摇臂	ARM, VALVE ROCKER	2	
7	PS2700. 04. 13	摇臂球座	PIVOT, ROCKER ARM	2	
8	PS2700. 04. 18	六角螺母M6x0.75	BOLT	1	
9	F4-04080005	进气门	DOOR, INTAKE	1	
10	F4-04080006	排气门	DOOR, EXHAUST	1	
11	F4-04080007	气门弹簧垫圈	SEAT, VALVE SPRING	2	
12	PS2700. 04. 03	气门油封	SEAT, VALVE STEM	2	
13	F4-04080008	气门弹簧	SPRING, VALVE INNER	2	
14	F4-04080010	气门弹簧座	SPRING, VALVE RETAINER	2	
15	F4-04080011	气门锁片	CLAMP, VALVE	2	

零部件名称 气缸和曲轴箱 2

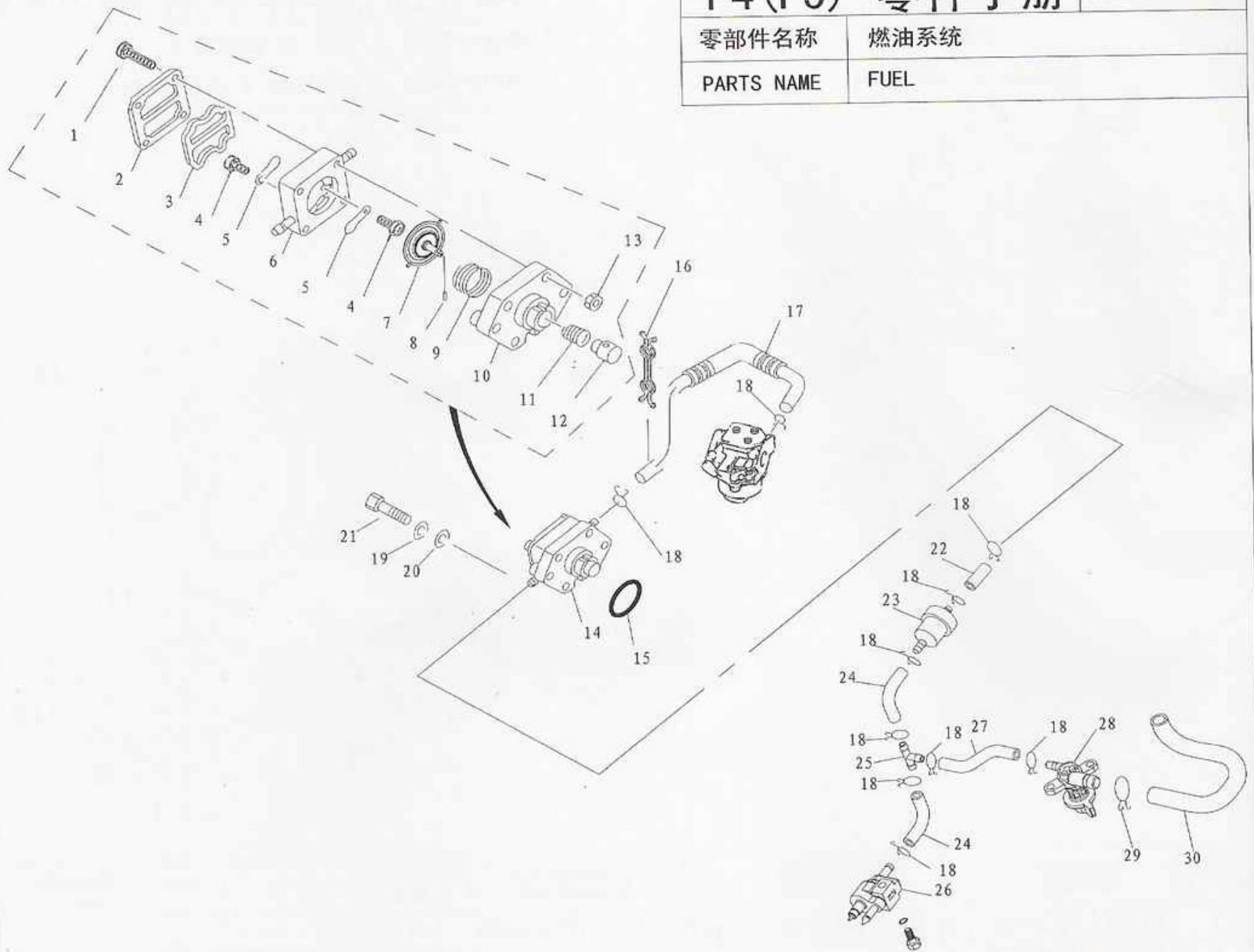
PARTS NAME CYLINDER & CRANKCASE 2



SN. 参照号码	PART NO. 零件编号	DESCRIPTION 零件名称(中文)	DESCRIPTION 零件名称(英文)	QTY 数量				REMARKS 备注
1	GB/T5783-86	六角头螺栓M6 × 16	BOLT , HEXAGON	4				
2	F4-04000018	缸头罩	COVER , CYLINDER HEAD	1				
3	F4-04000017	缸头罩密封垫	GASKET , CYLINDER COVER	1				
4	F4-04080002	气门导管	PIPE , VALVE	2				
5	F4-04080101	气缸头	CYLINDER , HEAD	1				
6	F4-04000003	空心定位销	PIN , HOLLOW	2				
7	F4-04000014	缸头复合垫	GASKET , CYLINDER HEAD	1				
8	GB/T5782-1986	六角螺栓M6 × 45	BOLT , HEXAGON	1				
9	BR6HS	火花塞	PLUG , SPARK	1				
10	F4-04000033	气缸头螺栓A	BOLT , CYLINDER HEAD "A"	3				
11	F4-04000034	气缸头螺栓B	BOLT	1				
12	GB/T5783-2000	六角头螺栓M8 × 14	BOLT , HEXAGON	1				
13	GB/T97.1-85	平垫圈8	WASHER , PLATE	1				
14	F4-04000036	节温器	THERMOSTAT	1				
15	GB/T97.1-85	平垫圈6	WASHER , PLATE	8				
16	GB/T5783-2000	六角头螺栓M6 × 20	BOLT , HEXAGON	3				
17	F4-04000012	回水管	PIPE , RETURN	1				
18	F4-04010002	水咀	SPILE WATER	1				
19	F4-04070001	节温器盖	COVER , THERMOSTAT	1				
20	F4-04070100	节温器盖水咀组件	COVER AND SPILE WATER ASSY	1				
21	F4-04000011	节温器盖密封垫	GASKET , THERMOSTAT	1				
22	F4-04070003	节温器盖阳极	ANODE	1				
23	GB/T818-85	十字槽盘头螺钉M5 × 25	SCREW , PAN HEAD	1				

零部件名称 燃油系统

PARTS NAME FUEL



SN. 参照号码	PART NO. 零件编号	DESCRIPTION 零件名称(中文)	DESCRIPTION 零件名称(英文)	QTY 数量		REMARKS 备注
1	GB/T823-88	十字槽小盘头螺钉M4×25	SCREW, SMALL PAN HEAD	4		
2	F4-04090003	燃油泵盖	COVER, FUEL PUMP	1		
3	F4-04090004	上隔膜	DIAPHRAGM, TOP	1		
4	F4-04090011	阀门螺钉M3×5	SCRRW, VALVE	2		
5	F4-04090005	单向阀片	PLATE	2		
6	F4-04090002	燃油泵壳	FUEL PUMP SHELL	1		
7	F4-04090100	隔膜组件	DIAPHRAGM ASSY	1		
8	GB/T309-2000	滚针φ3x12	ROLLER NEEDLE	1		
9	F4-04090008	隔膜弹簧	SPRING, DIAPHRAGM	1		
10	F4-04090001	燃油泵座	SEAT, FUEL PUMP	1		
11	F4-04090007	柱塞弹簧	SPRING, PLUNGER	1		
12	F4-04090006	柱塞	PLUNGER	1		
13	GB/T6170-2000	螺母M4	NUT	4		
14	F4-04090000	燃油泵组件	FUEL PUMP ASSY	1		
15	F4-04090009	燃油泵座O形圈	O-RING	1		
16	F4-04000031-2	尼龙管夹(B)	CLIP, NYLON "B"	1		
17	F4-04000028	燃油管E	PIPE, FUEL "E"	1		φ10xφ5x260
18	F4-04000030	油管夹簧B	SPRING, FUEL PIPE "B"	9		
19	GB/T93-1987	弹簧垫圈6	WASHER, SPRING	2		
20	GB/T97.1-85	平垫圈6	WASHER, PLATE	2		

F4(F5) 零件手册

PAGE 17 OF 23

零部件名称

燃油系统

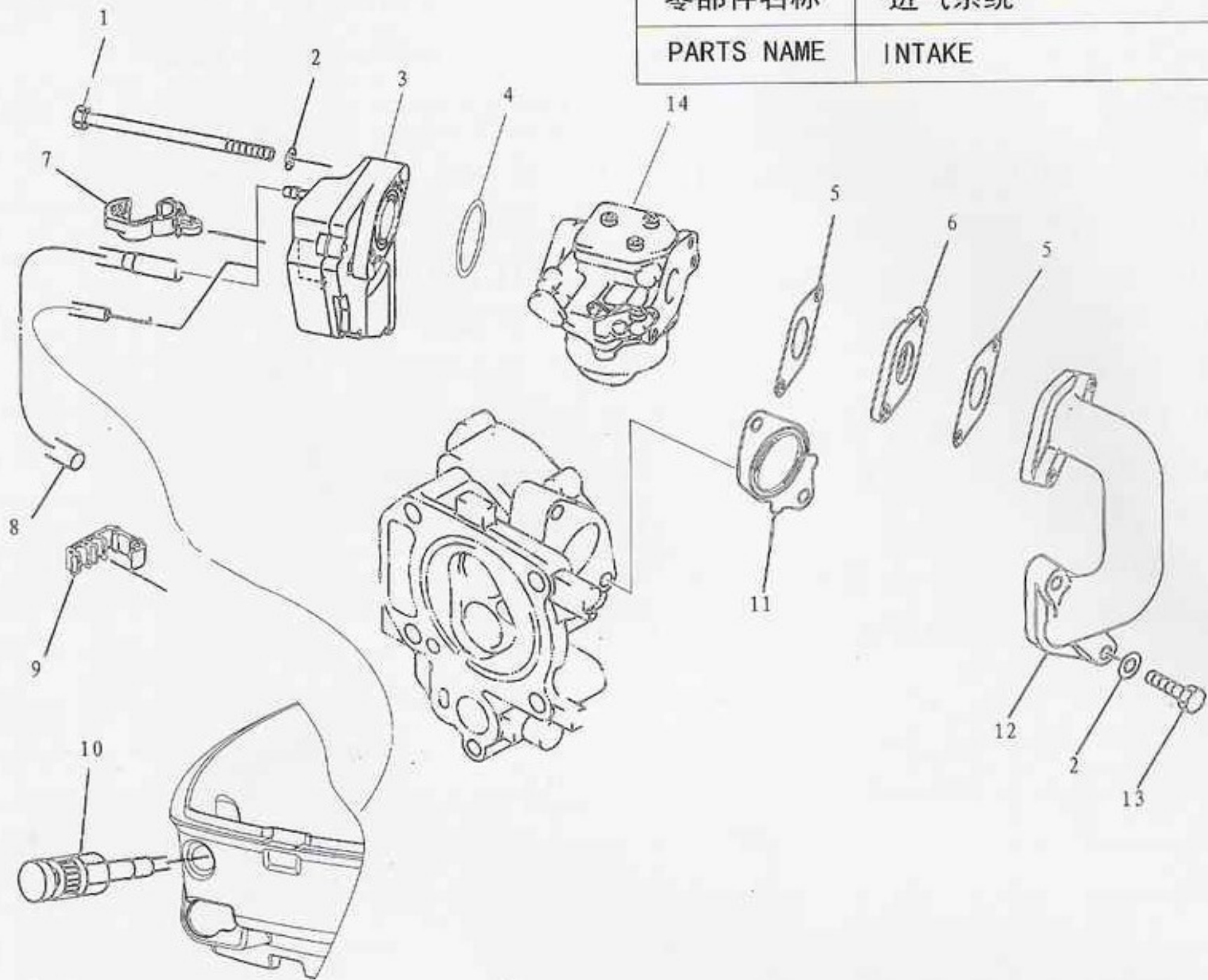
PARTS NAME

FUEL

SN. 参照号码	PART NO. 零件编号	DESCRIPTION 零件名称(中文)	DESCRIPTION 零件名称(英文)	QTY 数量					REMARKS 备注
21	GB/T5783-2000	六角头螺栓M6×30	HEXAGON BOLT	2					
22	F4-05000008	燃油管D	PIPE , FUEL "D"	1					φ10xφ5x60
23	F4-05000300	燃油过滤器组件	FUEL FILTER ASSY	1					
24	F4-05000007	燃油管C	PIPE , FUEL "C"	1					
25	F15-05000011	三通	THREE THROUGH	1					
26	F4-05000300	燃油管接头组件	FUEL PIPE TIE-IN ASSY	1					
27	F4-05000006	燃油管B	PIPE , FUEL "B"	1					
28	F4-05000100	油开关	OIL SWITCH	1					
29	F4-05000010	油管夹簧A	SPRING , OIL TUBE CLAMP	1					
30	F4-05000005	燃油管A	PIPE FUEL "A"	1					

零部件名称 进气系统

PARTS NAME INTAKE



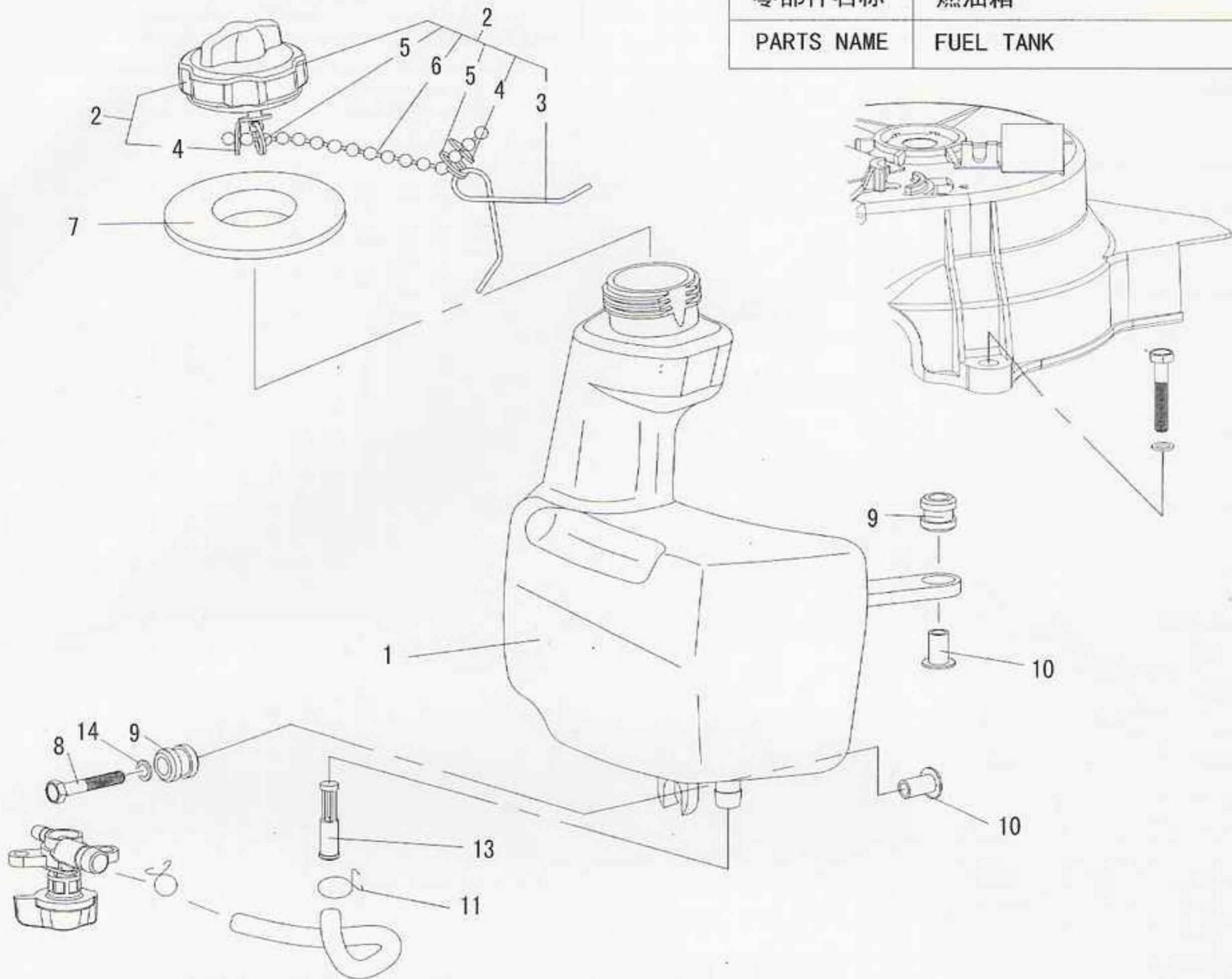
SN. 参照号码	PART NO. 零件编号	DESCRIPTION 零件名称(中文)	DESCRIPTION 零件名称(英文)	QTY 数量					REMARKS 备注
1	GB/T5284-86	六角头螺栓M6x90	HEXAGON BOLT	2					
2	GB/T97.1-85	平垫圈6	WASHER , PLATE	4					
3	F4-04110000	进气消音器组件	SILENCER ASSY , INTAKE	1					
4	JASO F404-96	O形密封圈2-24-031	O-RING	1					
5	F4-04000024	化油器密封垫	GASKET , CARBURETOR AIRPROOF	2					
6	F4-04000025	化油器垫块	GASKET , CARBURETOR	1					
7	F4-04110006	齿形尼龙卡箍	CLAMP , NYLON DENTIFORM	1					
8	F4-04000035	回气管	PIPE , RETURN GAS	1					
9	F4-04000031-1	尼龙管卡(A)	CLAMP , NYLON "A"	1					
10	F4-05000400	阻风门拉柄组件	CHOKE HANDLE ASSY	1					
11	F4-04000022	进气弯管密封垫	GASKET , INNER PIPE	1					
12	F4-04000023	进气歧管	MANIFOLD , INTAKE	1					
13	GB/T5284-86	六角头螺栓M6x25	HEXAGON BOLT	2					
14	F4-04140000	化油器	CARBURETOR	1					

零部件名称

燃油箱

PARTS NAME

FUEL TANK



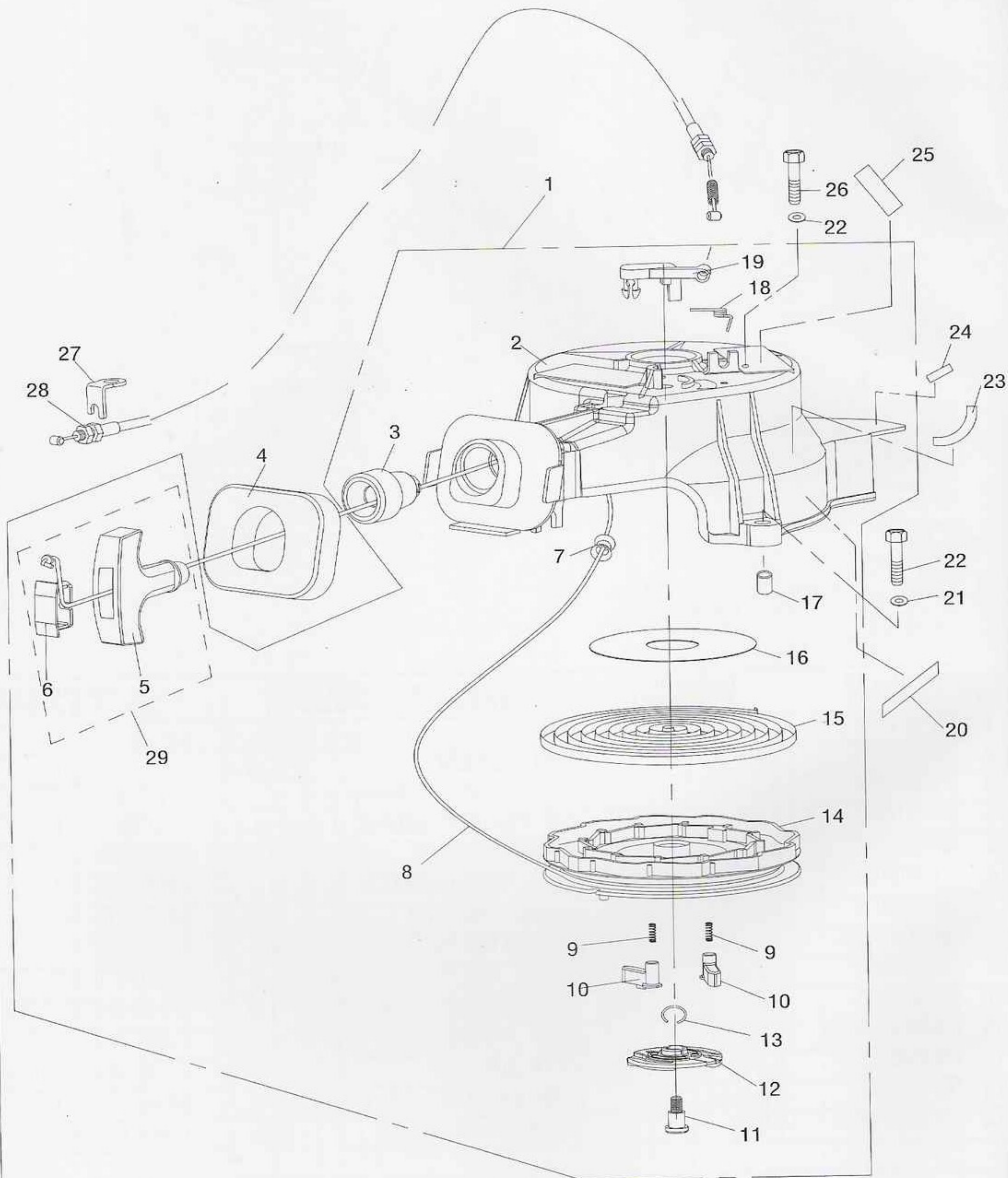
SN. 参照号码	PART NO. 零件编号	DESCRIPTION 零件名称(中文)	DESCRIPTION 零件名称(英文)	QTY 数量					REMARKS 备注
1	F4-04120001	油箱	TANK	1					
2	F4-04120100	油箱盖组件	TANK COVER ASSY	1					
3	F4-04120103	防脱落扭簧	SPRING ,PREVENT DESQUAMATING	1					
4	F4-04120105	防脱落卡片	SHEET METAL ,PREVENT DESQUAMATING	2					
5	F4-04120106	钢丝锁圈	EYELET ,STEEL WIRE	2					
6	F4-04120104	防脱链	CHAIN ,PREVENT DESQUAMATING	1					
7	F4-04120111	油箱盖橡胶密封垫	GASKET ,TANK COVER	1					
8	GB/T5783-2000	六角头螺栓M6×25	HEXAGON BOLT	1					
9	F4-04120002	油箱减震器	DAMPER ,TANK	3					
10	F4-04120003	减震器衬套	BUSH ,DAMPER	3					
11	F4-04000030	油管夹簧B	CLIP ,OIL PIPE "B"	2					
12	F4-05000005	燃油管A	PIPE ,FUEL "A"	1					
13	F4-04120005	油箱滤油芯	STRAINER ,TANK	1					
14	GB/T97.1-85	平垫圈6	WASHER ,PLATE	1					

零部件名称

起动器组件

PARTS NAME

STARTER



零部件名称

起动机组件

PARTS NAME

STARTER

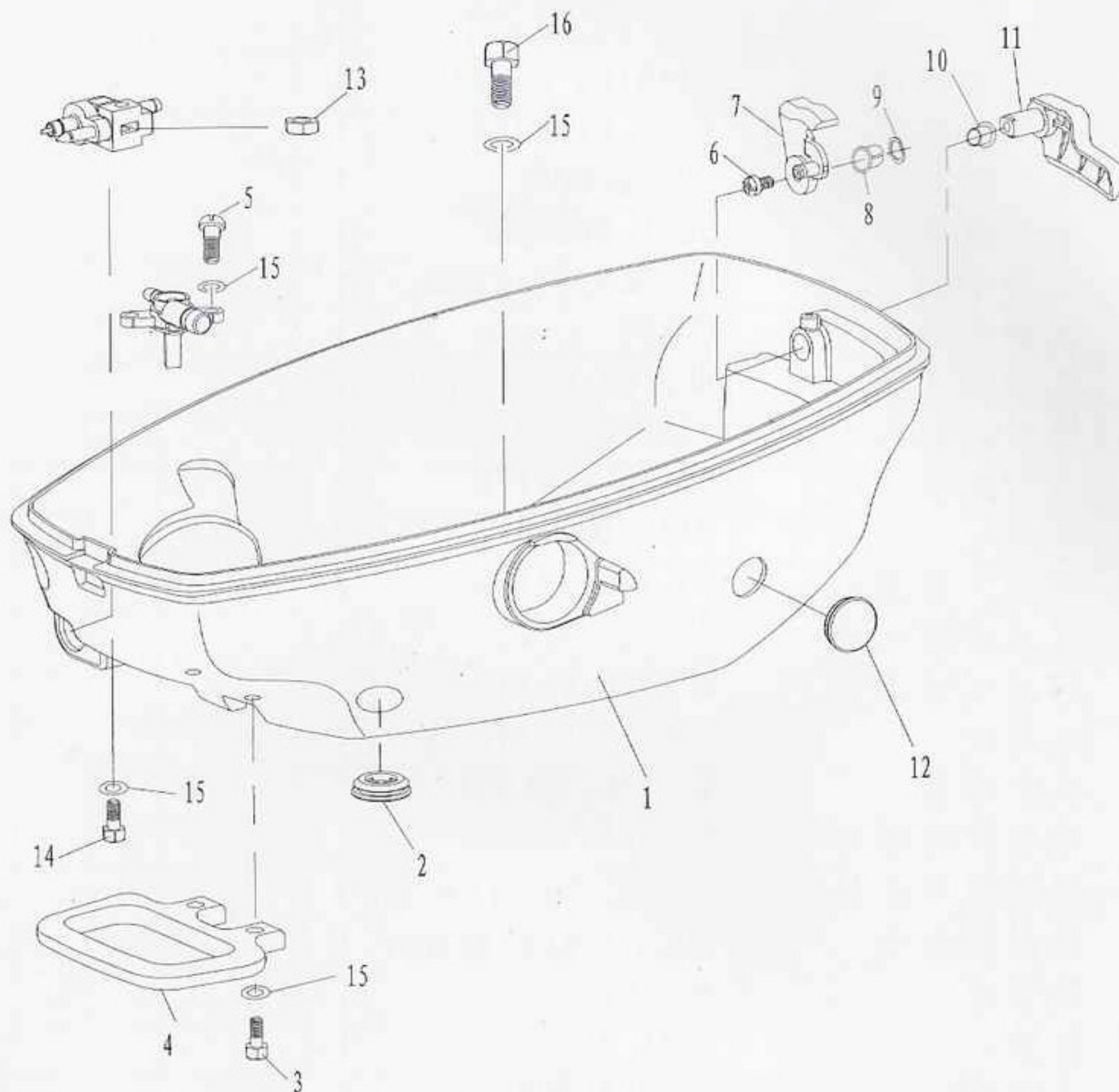
SN. 参照号码	PART NO. 零件编号	DESCRIPTION 零件名称(中文)	DESCRIPTION 零件名称(英文)	QTY 数量					REMARKS 备注
1	F4-04130000	起动机组件	STARTER ASSY	1					
2	F4-04130001	起动机外壳	CASE, STARTER	1					
3	F4-04130012	起动机绳导向器	GUIDE, ROPE	1					
4	F4-04130018	起动机减震块	SEAL, RUBBER	1					
5	F4-04130101	起动手柄	HANDLE, STARTER	1					
6	F4-04130102	起动手柄盖	COVER	1					
7	F4-04130013	起动机绳导管	MEATUS, START ROPE	1					
8	F4-04130011	锦纶编织线 $\phi 4$	WIRE, STARTER	1					
9	F4-04130004	卡瓣弹簧	SPRING, DRIVE	2					
10	F4-04130003	卡瓣	PAWL, DRIVE	2					
11	F4-04130008	起动机压板螺钉	BOLT, STARTER	1					
12	F4-04130006	起动机压板	PLATE, PRELL	1					
13	F4-04130007	起动机压板夹簧	SPRING, PLATE	1					
14	F4-04130019	起动机轮	DRULL, SHEAVE	1					
15	F4-04130005	涡形弹簧	SPRING, VOLUTE	1					
16	F4-04130014	起动机轮减磨片	WASHER, THRUST	1					
17	F4-04130002	起动机外壳衬套	BUSHING, STARTER CASING	3					
18	F4-04130010	制动器扭簧	WREST SPRING, DETENT	1					
19	F4-04130009	制动器	DETENT	1					
20	F4-08000101	标贴1	MARK 1	1					
21	GB/T97.1-85	平垫圈6	WASHER, THRUST	3					
22	GB/T5783-2000	六角头螺栓M6x35	BOLT, HEXAGON	2					
23	F4-08000109	标贴9	MARK 9	1					
24	F4-08000110	标贴10	MARK 10	1					
25	F4-08000102	标贴2	MARK 2	1					
26	GB/T5783-2000	六角头螺栓M6x20	BOLT, HEXAGON	1					
27	F4-04000005	钢索固定架	FIXED PLATE, TIGHTWIRE	1					
28	F4-02000013	制动器钢索组件	TIGHTWIRE ASSY, DETENT	1					
29	F4-04130100	起动手柄组件	STARTER HADLE ASSY	1					

零部件名称

底罩

PARTS NAME

BOTTOM COWLING



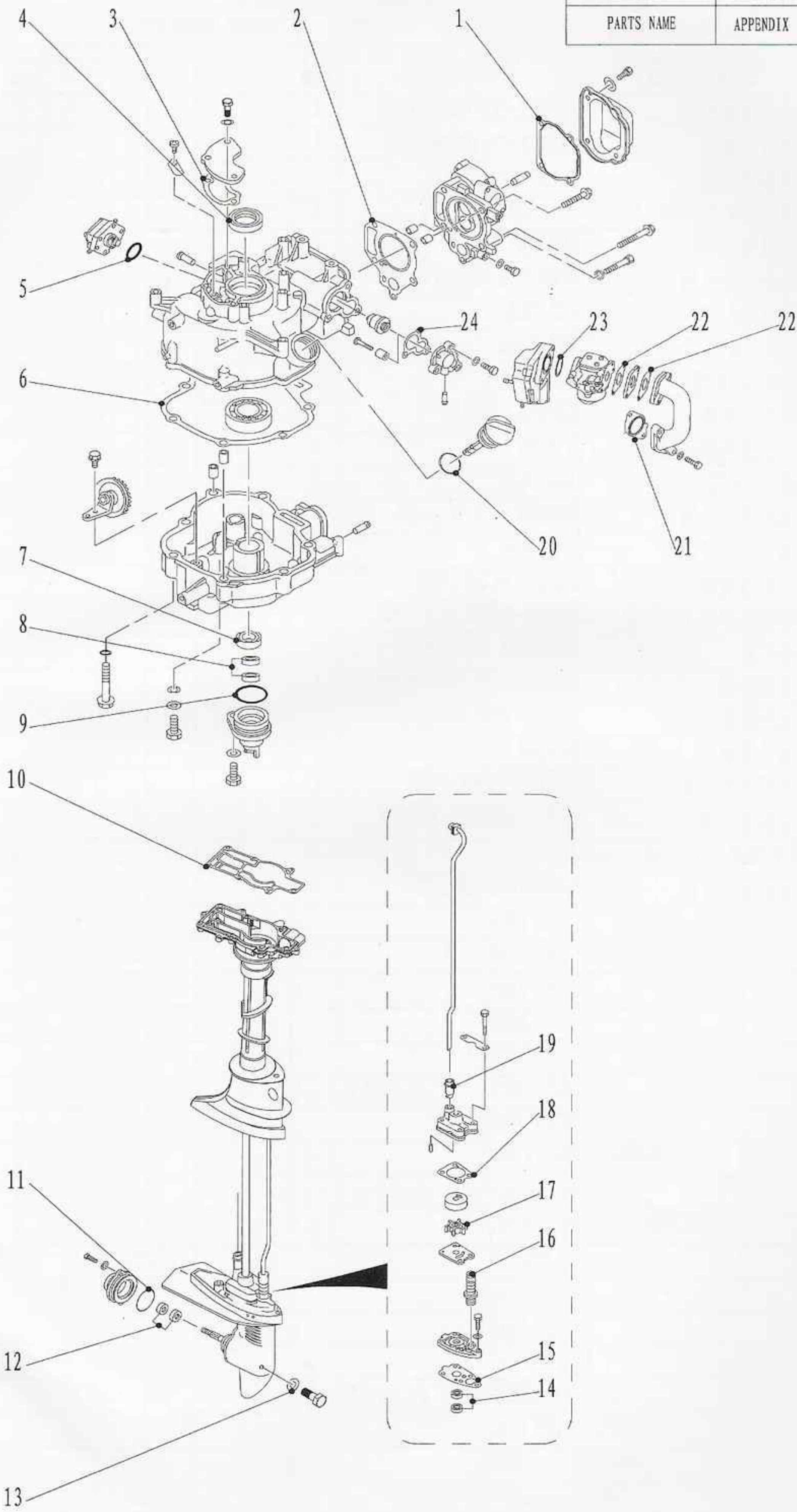
SN. 参照号码	PART NO. 零件编号	DESCRIPTION 零件名称(中文)	DESCRIPTION 零件名称(英文)	QTY 数量				REMARKS 备注
1	F4-05000001	底罩	COWLING, BOTTOM	1				
2	F4-05000013-1	橡胶闷盖A	COVER, RUBBER	1				
3	GB/T818-2000	十字槽盘头螺钉M6x14	CROSS, PAN HEAD BOLT	2				
4	F4-05000016	手把	HANDLE	1				
5	GB/T818-2000	十字槽盘头螺钉M6x12	CROSS, PAN HEAD BOLT	2				
6	GB/T5783-86	六角头螺栓M6x12	BOLT	1				
7	F15-05030000	顶罩锁紧块组件	LEVER, CLAMP	1				
8	F15-05000022	顶罩锁紧手柄尼龙套A	BUSH A	1				
9	F15-05000023	波形垫圈	WASHER, WAVE	1				
10	F15-05000036	顶罩锁紧手柄尼龙套B	BUSH B	1				
11	F4-05000012	顶罩锁紧手柄	LEVER, CLAMP	1				
12	F4-05000013-2	橡胶闷盖B	COVER, RUBBER	1				
13	GB/T6170-86	六角螺母M6	NUT, HEXAGON	1				
14	GB/T5783-2000	六角头螺栓M6x25	BOLT, HEXAGON	1				
15	GB/T97.1-85	平垫圈6	WASHER	12				
16	GB/T5783-2000	六角头螺栓M6x14	BOLT, HEXAGON	7				

零部件名称

附录(修理件)

PARTS NAME

APPENDIX (REPAIR KIT)



零部件名称

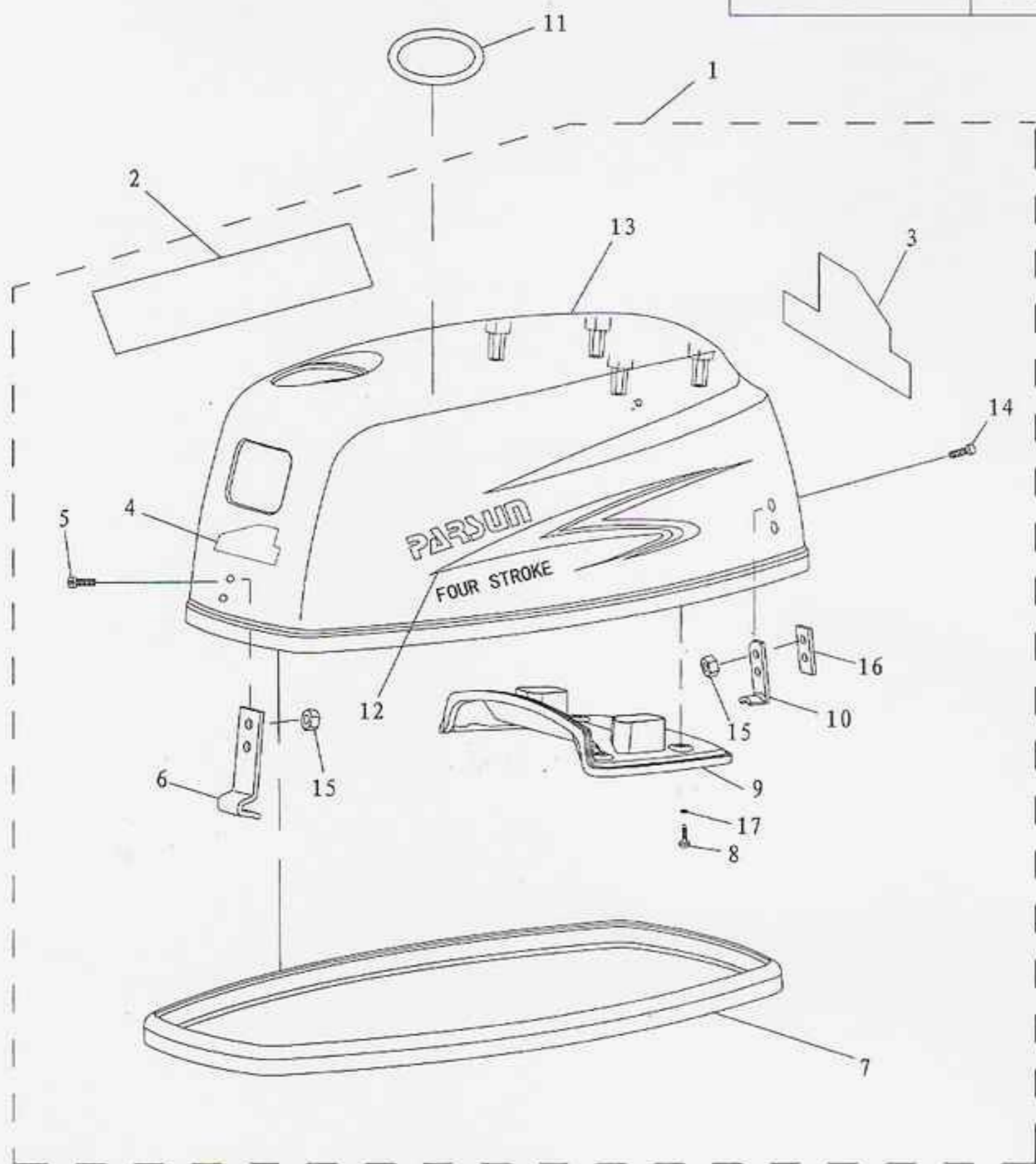
附录 (修理件)

PARTS NAME

APPENDIX (REPAIR KIT)

SN. 参照号码	PART NO. 零件编号	DESCRIPTION 零件名称(中文)	DESCRIPTION 零件名称(英文)	QTY 数量					REMARKS 备注
1	F4 04000017	缸头罩密封垫	GASKET, CYLINDER COVER	1					
2	F4-04000014	缸头复合垫	GASKET, CYLINDER HEAD	1					
3	F4-04000009	呼吸器密封垫	BREATHER GASKET	1					
4	F4-04010003	曲轴油封A 25×40×5	OIL SEAL	1					
5	F4-04090009	燃油泵座O形圈	O-RING	1					
6	F4-04000002	曲轴箱体复合垫	CRANK CASE COMPLEX GASKET	1					
7	F4-04060003	曲轴油封B 20×30×7	OIL SEAL	1					
8	F4-04060004	驱动轴上油封 10.8×21×7	OIL SEAL	2					
9	F4-04060002	油封壳体O形圈	O-RING	1					
10	F4-00000006	发动机密封垫	GASKET, ENGINE	1					
11	JISB2401 P48	水下装置壳体盖O形圈	O-RING	1					
12	F4-03050002	油封 13×22×7	OIL SEAL	2					
13	F4-03000024	注油孔螺塞垫圈	GASKET	3					
14	F4-03000027	油封 10.8×21×7	OIL SEAL	2					
15	F4-03000011	水泵座密封垫	GASKET, WATER PUMP	1					
16	F4-03000014	变档橡胶护套 (含弹簧)	RUBBER JACKET, SHIFT ROD	1					
17	F4-03060000	水泵叶轮	IMPELLER, WATER PUMP	1					
18	F4-03000018	泵壳密封垫	GASKET, WATER PUMP COVER	1					
19	F4-03000021	泵壳橡胶管	RUBBER TUBE, WATER PUMP	1					
20	F4-04000008	机油盖阻油圈	O-RING	1					
21	F4-04000022	进气弯管密封垫	GASKET, INNER PIPE	1					
22	F4-04000024	化油器密封垫	GASKET, CARBURETOR AIRPROOF	2					
23	JASO F404-96	O形密封圈 2-24-031	O-RING	1					
24	F4-04000011	节温器盖密封垫	GASKET, THERMOSTAT	1					

零部件名称	顶罩
PARTS NAME	TOP COWLING



SN. 参照号码	PART NO. 零件编号	DESCRIPTION 零件名称(中文)	DESCRIPTION 零件名称(英文)	QTY 数量				REMARKS 备注
1	F4-06000000	顶罩组件	TOP COWLING ASSY	1				
2	F4-08000113	标贴13	MARK 13	1				
3	F4-08000114	标贴14	MARK 14	1				F4
	F4-08000116	标贴16	MARK 16	1				F5.5
4	F4-08000115	标贴15	MARK 15	1				F4
	F4-08000117	标贴17	MARK 17	1				F5.5
5	GB/T8.8-2000	十字槽盘头螺钉M5x12	SCREW, PAN HEAD	2				
6	F4-06000005	锁紧钩	HOOK, LOCK	1				
7	F4-06000002	密封橡胶条	BAR RUBBER, AIRPROOF	1				
8	GB/T845-85	十字槽盘头自攻螺钉ST5.5x19	SCREW, TAPPING	4				
9	F4-06000003	顶罩消音盖	COVER, TOPCOWING MUFFLING	1				
10	F15-08000004	挂钩	POTHOOK	1				
11	F4-08000107	标贴7	MARK 7	1				
12	F4-08000112	标贴12	MARK 12	1				
13	F4-06000001	顶罩	TOP COWLING	1				
14	GB/T818-2000	十字槽盘头螺钉M5x20	SCREW, PAN HEAD	2				
15	GB/T6172.1-2000	六角薄螺母M5	THIN NUT, HEXAGON	2				
16	F4-06000006	挂钩垫	UNDERLAY, POTHOOK	1				
17	F4-06000004	橡胶垫片	UNDERLAY, RUBBER	4				