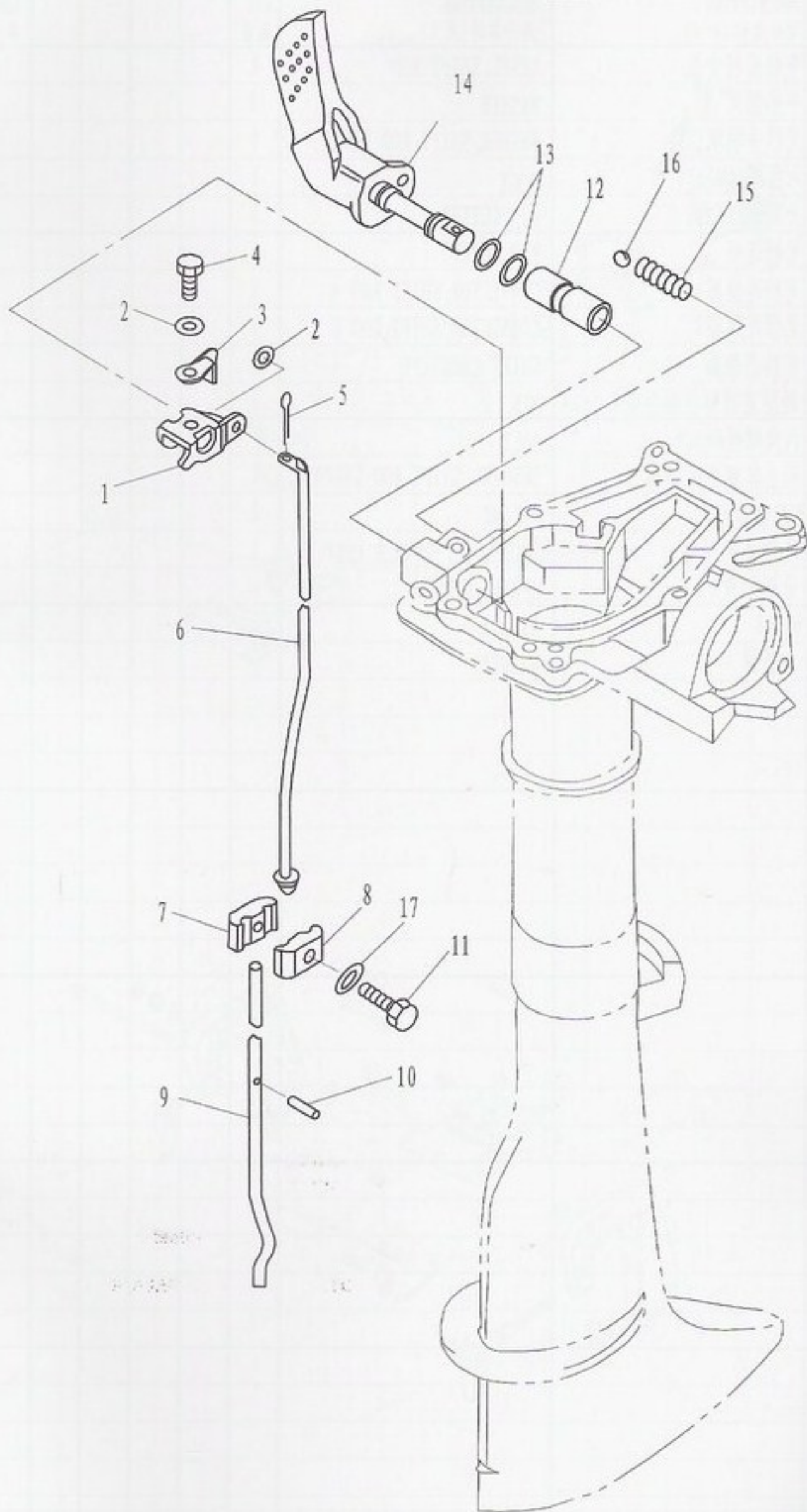


零部件名称:

控制系统

PARTS NAME:

CONTROL



零部件名称:

控制系统

PARTS NAME:

CONTROL

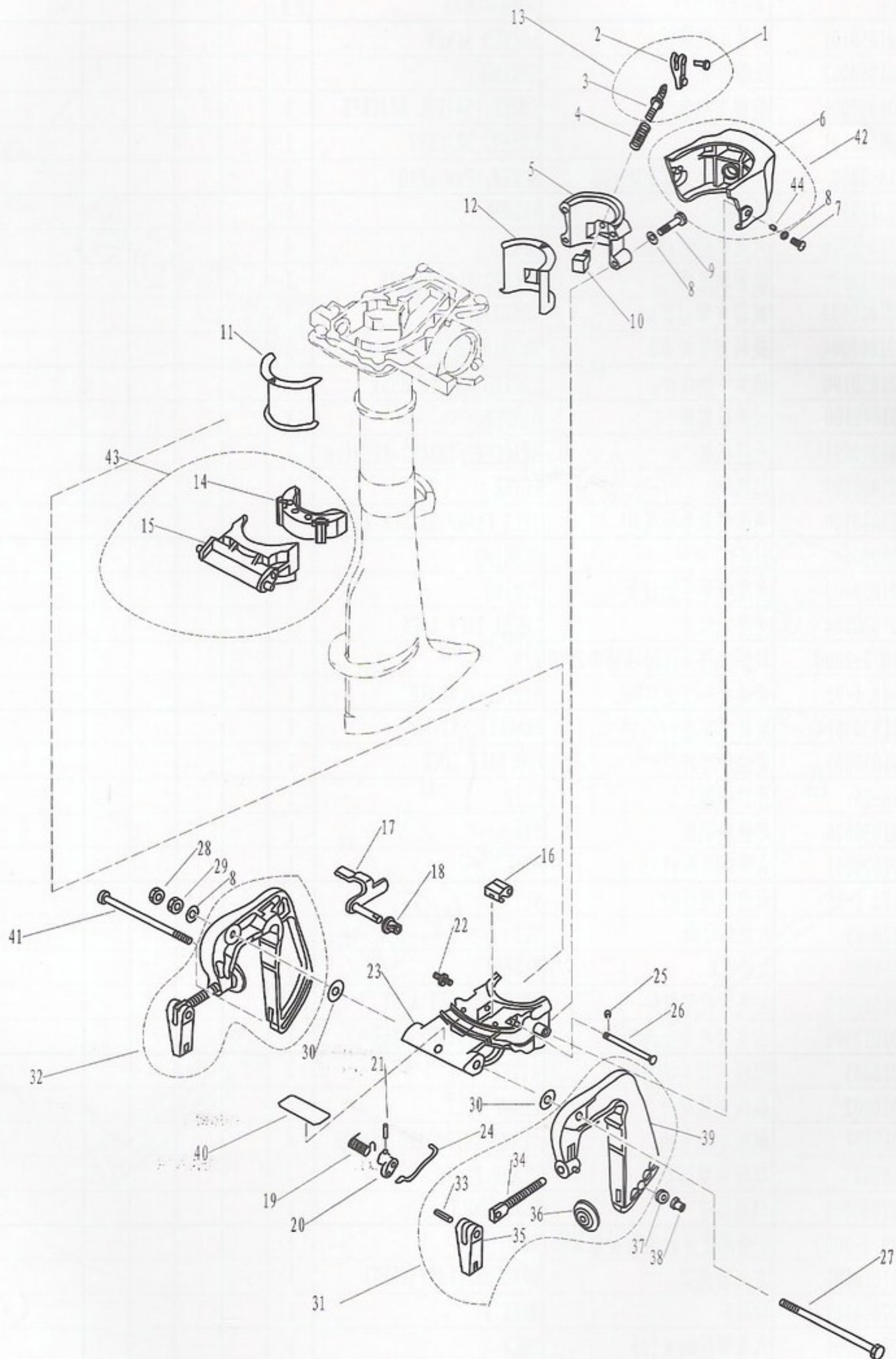
SN. 参照号码	PART NO. 零件编号	DESCRIPTION 零件名称(中文)	DESCRIPTION 零件名称(英文)	QTY 数量				REMARKS 备注
1	F2.6-02000006	变档连杆支架	LEVEL, SHIFT ROD	1				
2	GB/T97.1-85	平垫圈5	WASHER	3				
3	F2.6-02000008	变档手柄限位件	WASHER, SHIFT ROD LEVER	1				
4	GB/T5783-2000	六角螺栓M5x12	BOLT	1				
5	GB/T91-86	开口销1.6x12	PIN, COTTER	1				
6	F2.6-02000007	变档连杆	ROD SHIFT	1				
7	F2.6-00000001	变档连接器A	CONNECTOR, SHIFT ROD A	1				
8	F2.6-00000002	变档连接器B	CONNECTOR, SHIFT ROD B	1				
9	F2.6-03000005	变档凸轮轴	SHIFT CAMSHAFT	1				
10	GB/T879.2-2000	轻型直槽弹性圆柱销2.5x14	PIN	1				
11	GB/T5783-2000	六角螺栓M6x20	BOLT	1				
12	F4-02000002	水上装置壳体铜套	BUSHING, SHIFT ROD LEVER	1				
13	JISB2401	O形密封圈P9	O-RING	2				
14	F2.6-02020000	变档手柄组件	GEAR SHIFT HANDLE ASSY	1				
15	F4-02000003	变档弹簧	SPRING, GEAR	1				
16	GB308-84	钢珠8	BALL 8	1				
17	F4-00000005	大垫圈	WASHER	1				

零部件名称:

托架

PARTS NAME:

BRACKET



SN. 参照号	PART NO. 零件编号	DESCRIPTION 零件名称(中文)	DESCRIPTION 零件名称(英文)	QTY 数量				REMARKS 备注
1	GB/T875-86	扁平头半空心铆钉4×11	RIVET	1				
2	F4-01060002	锁紧手柄	CLAMP HANDLE	1				

零部件名称:

托架

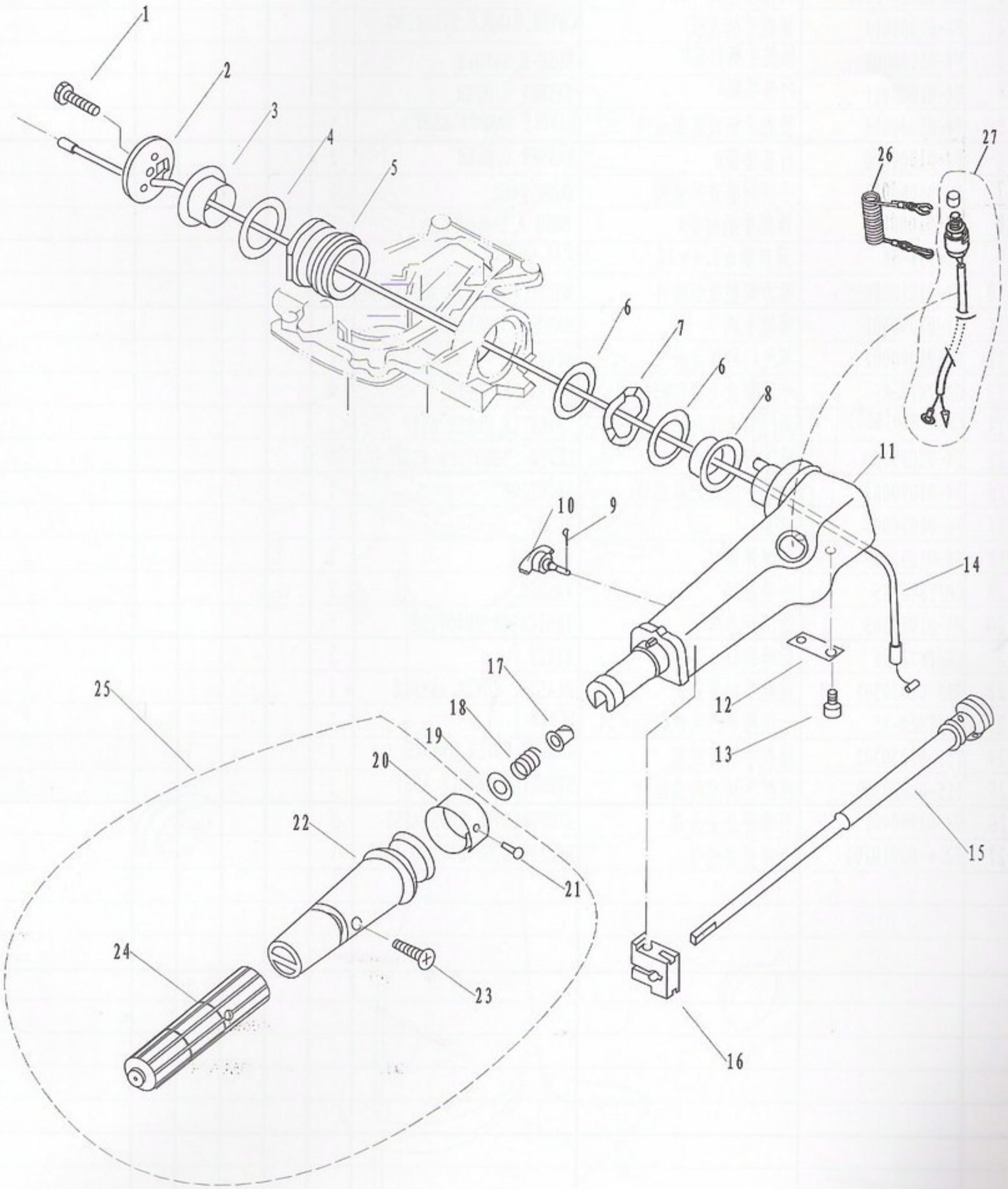
PARTS NAME:

BRACKET

SN. 参照号码	PART NO. 零件编号	DESCRIPTION 零件名称(中文)	DESCRIPTION 零件名称(英文)	QTY 数量				REMARKS 备注
3	F2.6-01050101	锁紧手柄螺杆	LOCKED SCREW	1				
4	F2.6-01050002	压缩弹簧	SPRING	1				
5	F2.6-01050001	旋转支架盖	COVER, SWIVEL BRACKET	1				
6	F2.6-00000101	托架护盖	COVER, BRACKET	1				
7	GB/T818-2000	十字槽盘头螺钉M6x16	SCREW, PAN HEAD	2				
8	GB/T97.1-85	平垫圈6	WASHER	6				
9	GB/T5783-2000	六角螺栓M6x30	BOLT	4				
10	F2.6-01050200	锁紧块组件	LOCKED BLOCK ASSY	1				
11	F2.6-01000003	旋转支架衬套A	BUSHING A	1				
12	F2.6-01000004	旋转支架衬套B	BUSHING B	1				
13	F2.6-01050100	锁紧手柄组件	LOCKED HANDLE ASSY	1				
14	F2.6-01040100	承推减震器	DAMPER	1				
15	F2.6-01040001	承推托架	BRACKET, THRUST RECEIVE	1				
16	F2.6-01030007	起翘块	LEVER	1				
17	F2.6-01030100	角度锁紧手柄组件	TILT CLAMP HANDLE ASSY	1				
18	F4-01090006	衬套	BUSHING	1				
19	F2.6-01030003	角度锁紧手柄钮簧	SPRING	1				
20	F2.6-01030004	角度定位件	LEVER, TILT LOCK	1				
21	GB/T879.2-2000	轻型直槽弹性圆柱销Φ2x10	PIN	1				
22	GB/T7940.1-95	直通式压注油杯M6	NIPPLE, GREASE	1				
23	F2.6-01030001	旋转支架座	BRACKET, SWIVEL	1				
24	F2.6-01030005	定位件连杆	ROD, TILT LOCK	1				
25	GB/T896-86	开口档圈3.5	CLIP	1				
26	F2.6-01030006	起翘块销轴	PIN	1				
27	F2.6-01000001	六角螺栓M8x135	BOLT	1				
28	GB/T6172.1-85	六角薄螺母M8	NUT	1				
29	GB/T6170-85	六角螺母M8	NUT	1				
30	GB/T96-1985	大垫圈8	WASHER	2				
31	F2.6-01010000	左夹紧托架组件	BRACKET LEFT ASSY	1				
32	F2.6-01020000	右夹紧托架组件	BRACKET RIGHT ASSY	1				
33	F4-01010005	舰板夹紧手柄铆钉	RIVET	2				
34	F4-01010002	舰板夹紧螺杆	CLAMP BOLT	2				
35	F4-01010004	舰板夹紧手柄	CLAMP SHIPBOARD HANDLE	2				
36	F4-01010003	舰板夹紧圆盘	CLAMP PLATE	2				
37	F2.6-01000002	螺栓垫管	BUSH, BOLT	1				
38	GB/T889.1-2000	非金属嵌件六角锁紧螺母M6	NUT	1				
39	F2.6-01010001	左夹紧托架	BRACKET, CLAMP (LEFT)	1				
40	F2.6-07000009	标贴9	MARK 9	1				
41	GB/T5782-2000	六角螺栓M6×125	BOLT	1				
42	F2.6-00000100	托架护盖组件	BRACKET COVER ASSY	1				
43	F2.6-01040000	承推托架组件	THRUST RECEIVE ASSY	1				
44	F2.6-00000102	护盖衬管	BUSH	1				

零部件名称: 操舵系统

PARTS NAME: STEERING



零部件名称:

操舵系统

PARTS NAME:

STEERING

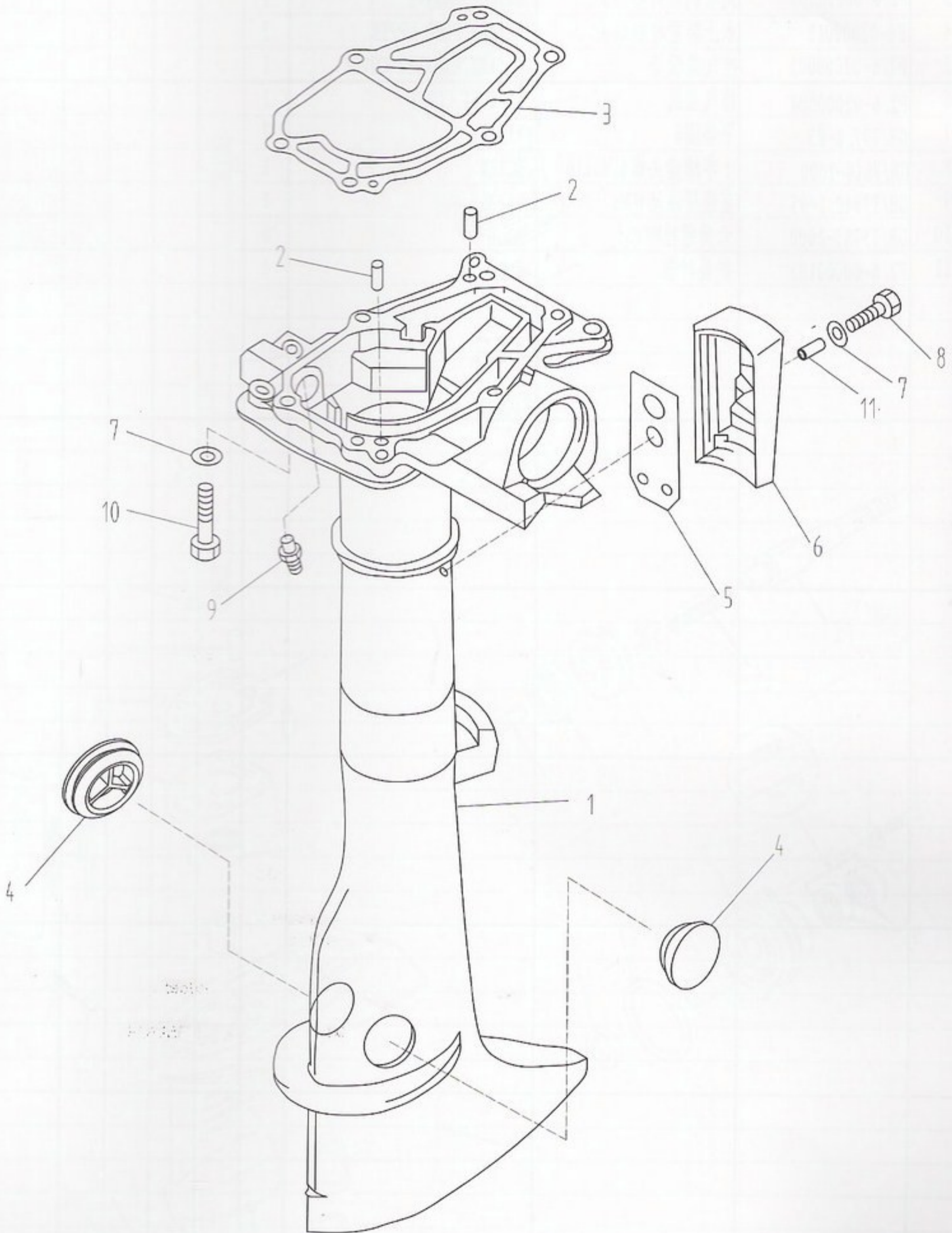
SN. 参照号码	PART NO. 零件编号	DESCRIPTION 零件名称(中文)	DESCRIPTION 零件名称(英文)	QTY 数量					REMARKS 备注
1	GB/T5783-2000	六角螺栓M8×25	BOLT	1					
2	F4-01000014	操舵手柄盖板	COVER, HANDLE STEERING	1					
3	F4-01000008	操舵手柄衬套B	BUSH B, HANDLE	1					
4	F4-01000011	衬套垫圈A	WASHER A, BUSH	1					
5	F4-05000014	操舵手柄减震器组件	HANDLE DAMPER ASSY	1					
6	F4-01000010	衬套垫圈B	WASHER B, BUSH	2					
7	F4-01000012	手柄衬套波形垫圈	BUSH, WAVE	1					
8	F4-01000009	操舵手柄衬套A	BUSH A, HANDLE	1					
9	GB/T91-86	开口销φ1.6×12	PIN, COTTER	1					
10	F4-01090200	阻力调整旋钮组件	BOLT , FRICTION ADJUSTING	1					
11	F4-01090001	操舵手柄	HANDLE, STEERING	1					
12	F4-01090002	节气门杆固定板	STAY	1					
13	GB/T818-85	十字槽盘头螺钉M5×12	SCREW, PAN HEAD	2					
14	F2.6-02010003	油门钢索组件	THROTTLE CABLE ASSY	1					
15	F4-01090100	节气门杆组件	LEVER , THROTLLE ASSY	1					
16	F4-01090003	操舵手柄握把摩擦块	FRICTION	1					
17	F4-01090006	衬套	BUSH	1					
18	F4-01090007	压缩弹簧	SPRING	1					
19	GB/T848-85	小垫圈10	WASHER	1					
20	F4-01090303	油门标志牌	INDICATOR, THROTTLE	1					
21	GB/T827-86	标牌铆钉φ2×5	RIVET	1					
22	T15-01020301	操舵手柄塑胶套	PLASTIC COVER, HANDLE	1					
23	GB/T820-85	十字槽半沉头螺钉M5×24	SCREW	1					
24	T15-01020302	操舵手柄橡胶套	RUBBER COVER, HANDLE	1					
25	T15-01020300	操舵手柄塑胶套组件	STEERING HANDLE ASSY	1					
26	F4-01090401	引擎停止安全索	STOPER, HANG ROPE ASSY	1					
27	F2.6-02010200	急停开关组件	ENGINE STOP SWITCH ASSY	1					

零部件名称:

水上装置壳体

PARTS NAME:

UPPER CASING



零部件名称:

水上装置壳体

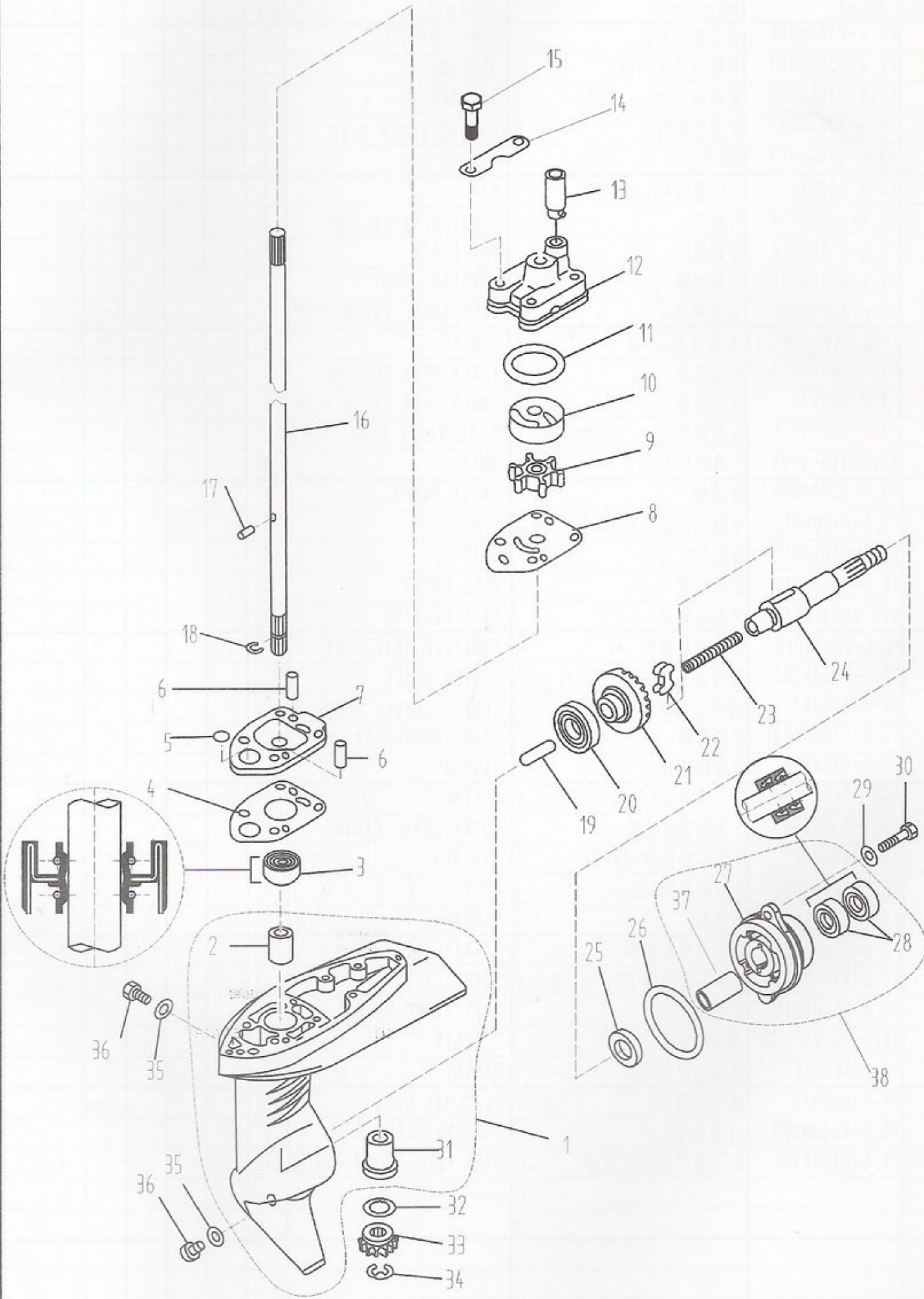
PARTS NAME:

UPPER CASING

SN. 参照号码	PART NO. 零件编号	DESCRIPTION 零件名称(中文)	DESCRIPTION 零件名称(英文)	QTY 数量					REMARKS 备注
1	F2.6-02000001	水上装置壳体	UPPER CASING	1					
2	F15-0000013	定位销Φ4x12	PIN	2					
3	F2.6-00000003	发动机密封垫	GASKET, ENGINE	1					
4	F4-02000012	水上装置橡胶堵头	RUBBER PLUG, UPPER	2					
5	F2.6-02000005	排气盖板垫	GASKET, EXHAUST COVER	1					
6	F2.6-02000004	排气盖板	EXHAUST COVER	1					
7	GB/T97.1-85	平垫圈6	WASHER	7					
8	GB/T818-2000	十字槽盘头螺钉M6x16	SCREW	1					
9	GB/T7940.1-95	直通压注油杯M6	GREASE CUP	1					
10	GB/T5783-2000	六角螺栓M6x35	BOLT	6					
11	F2.6-00000102	护盖衬管	BUSH	1					

零部件名称: 水下装置壳体 and 驱动系统1

PARTS NAME: LOWER CASING & DRIVE 1



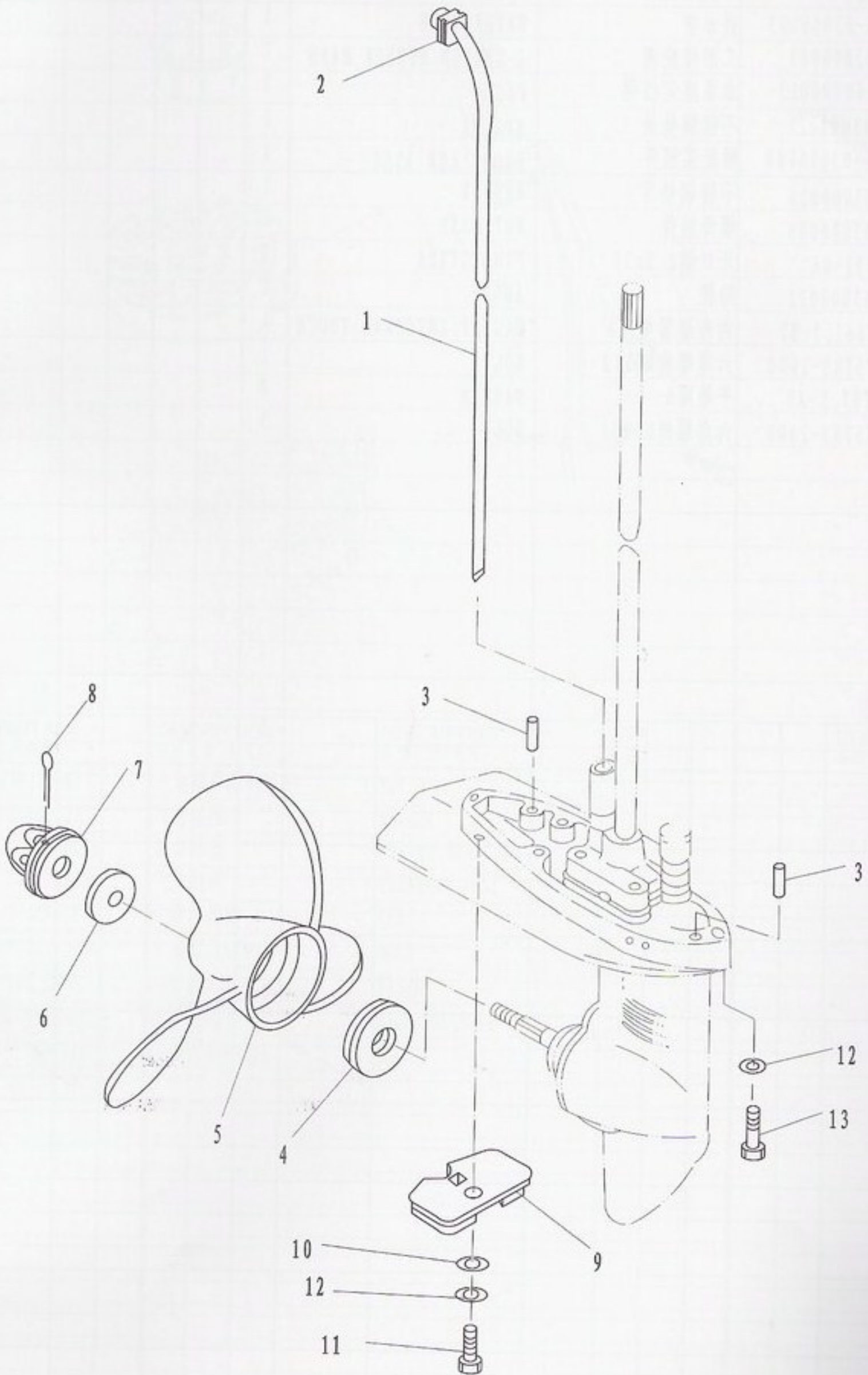
零部件名称: 水下装置壳体和驱动系统1

PARTS NAME: LOWER CASING &DRIVE 1

SN. 参照号码	PART NO. 零件编号	DESCRIPTION 零件名称(中文)	DESCRIPTION 零件名称(英文)	QTY 数量				REMARKS 备注
1	F2.6-03000001	水下装置壳体	LOWER CASING	1				
2	F2.6-03000003	不带档边筒形轴承	BEARING	1				
3	F2.6-03000004	驱动轴下油封9.8x24x9	OIL SEAL	1				
4	F2.6-03000007	水泵座密封垫	GASKET, WATER PUMP	1				
5	F2.6-03000009	O形密封圈	O-RING	1				
6	F4-03000013	定位销 $\phi 4 \times 18$	PIN	2				
7	F2.6-03000008	水泵座	HOUSING, WATER PUMP	1				
8	F2.6-03000010	外档板	OUT PLATE	1				
9	F2.6-03000100	叶轮组件	IMPELLER ASSY	1				
10	F2.6-03000015	水泵内壳	COVER, INNER WATER PUMP	1				
11	JASO F404 19-033	水泵内壳O形圈	O-RING	1				
12	F2.6-03000014	水泵壳体	WATER PUMP HOUSING	1				
13	F4-03000021	泵壳橡胶管	RUBBER TUBE, WATER PUMP	1				
14	F2.6-03000016	泵壳固定板	PLATE, WATER PUMP FIXED	2				
15	GB/T5783-2000	六角螺栓M6x40	BOLT	4				
16	F2.6-03000011	驱动轴	DRIVE SHAFT	1				
17	F2.6-03000013	叶轮定位销 $\phi 3.5 \times 7$	PIN	1				
18	F2.6-03000012	轴用钢丝档圈	CLIP	1				
19	F2.6-03000020	变档柱塞	PLUG, SHIFT	1				
20	NTN 6003 EY	深沟球轴承	BALL BEARING	1				
21	F2.6-03000019	正档齿轮组件	POSITIVE GEAR ASSY	1				
22	F2.6-03000202	离合器块	CLUTCH BLOCK	1				
23	F4-03030003	离合器块压簧	SPRING, CLUTCH BLOCK	1				
24	F2.6-030000201	螺旋桨轴	SHAFT, PROPELLER	1				
25	F2.6-03000021	驱动轴垫圈	WASHER	1				
26	JISB 2401 P48	水下壳体盖O形圈 $\phi 47.1 \times 3.5$	O-RING	1				
27	F2.6-03000301	水下装置壳体盖	COVER, LOWER CASING	1				
28	F4-03050002	螺旋桨轴油封13x22x7	OIL SEAL	2				
29	GB/T5783-2000	六角螺栓M6x16	BOLT	2				
30	GB/T97.1-85	平垫圈6	WASHER	2				
31	F2.6-03000002	带档边筒形轴承	BEARING	1				
32	F2.6-03000017	主动轮填隙片(T: 2.0毫米)	SHIM(T: 2.0MM)	1				
33	F2.6-03000018	主动齿轮	INITIATIRE GEAR	1				
34	GB/T896-86	开口档圈6	CIRCLIP	1				
35	F4-03000024	注油孔螺塞垫	GASKET	2				
36	F4-03000023	注油孔螺塞	PLUG, OIL HOLE	2				
37	F2.6-03000302	筒形轴承	BEARING, SLEEVE	1				
38	F2.6-03000300	水下装置壳体盖组件	COVER ASSY, LOWER CASING	1				

零部件名称: 水下装置壳体 and 驱动系统2

PARTS NAME: LOWER CASING & DRIVE 2



零部件名称: 水下装置壳体和驱动系统2

PARTS NAME: LOWER CASING & DRIVE 2

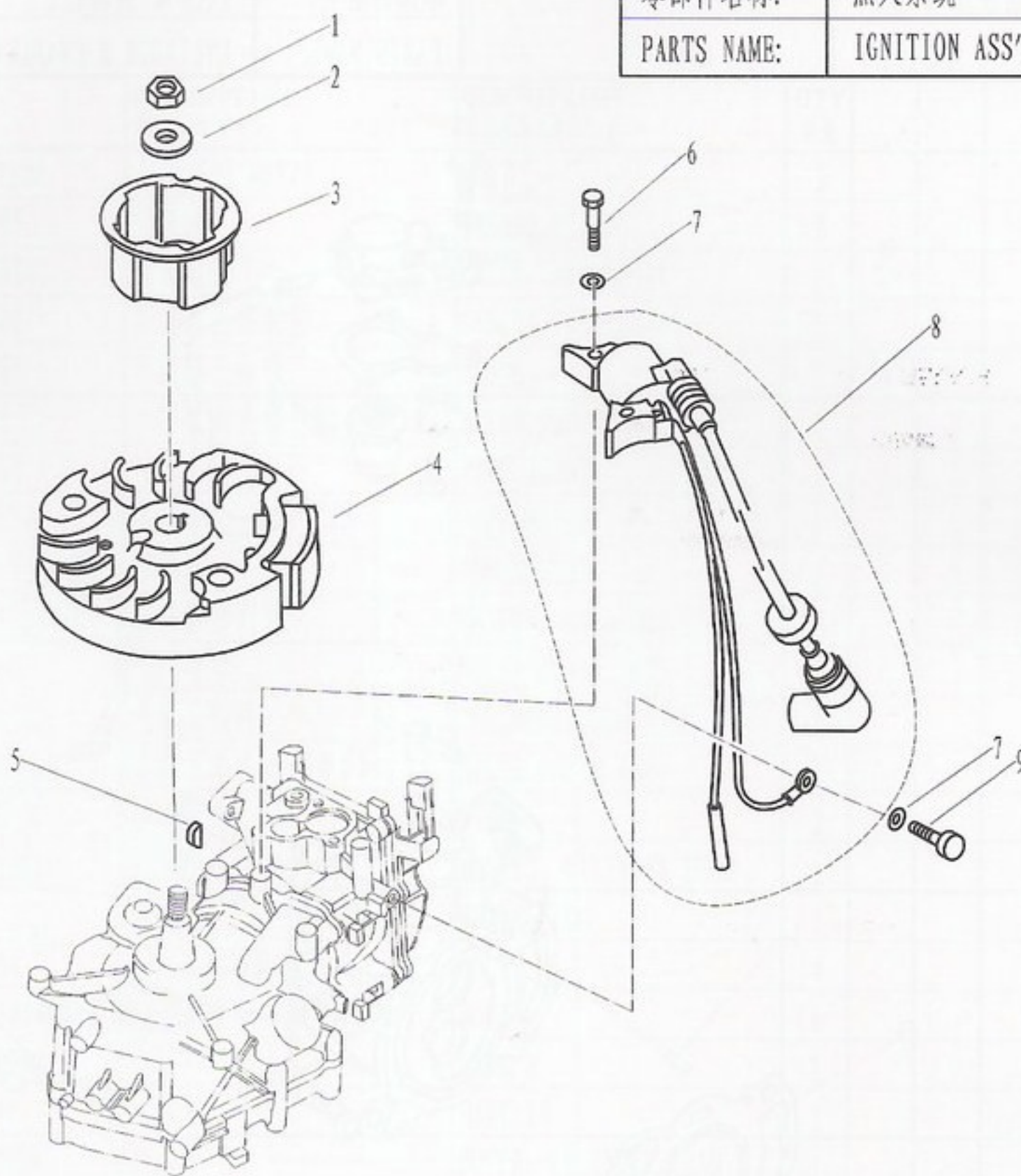
SN. 参照号码	PART NO. 零件编号	DESCRIPTION 零件名称(中文)	DESCRIPTION 零件名称(英文)	QTY 数量				REMARKS 备注
1	F2.6-02000003	进水管	WATER TUBE	1				
2	F4-02040002	工形橡胶圈	I-SHAPED RUBBER BAND	1				
3	F15-00000013	水泵座定位销	PIN	2				
4	F4-03000025	不锈钢垫块	SPACER	1				
5	F2.6-03010000	螺旋桨组件	PROPELLER ASSY	1				
6	F4-03000026	不锈钢垫片	WASHER	1				
7	F4-03080000	螺母组件	NUT ASSY	1				
8	GB/T91-86	开口销2.5x30	PIN, COTTER	1				
9	F4-03000022	阳极	ANODE	1				
10	GB/T861.1-87	内齿锁紧垫圈6	WASHER, INTERNAL TOOTH	1				
11	GB/T5783-2000	六角螺栓M6x12	BOLT	1				
12	GB/T97.1-85	平垫圈6	WASHER	4				
13	GB/T5783-2000	六角螺栓M6x30	BOLT	3				

零部件名称:

点火系统

PARTS NAME:

IGNITION ASS'Y



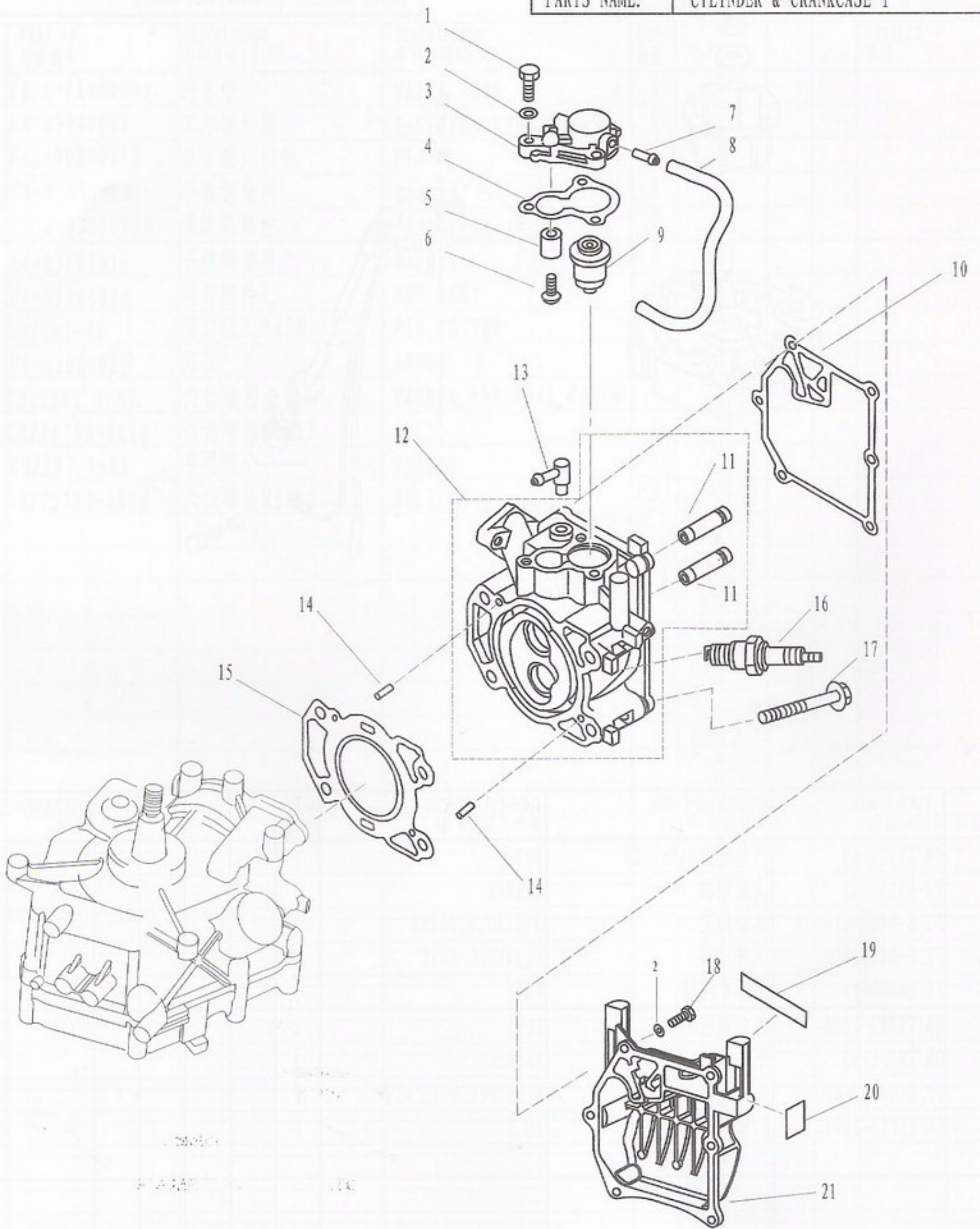
SN. 参照号码	PART NO. 零件编号	DESCRIPTION 零件名称(中文)	DESCRIPTION 零件名称(英文)	QTY 数量				REMARKS 备注
1	GB/T6171-86	六角螺母M10x1.25	NUT	1				
2	F4-04000021	飞轮垫圈	WASHER	1				
3	F2.6-04000016	起动轴套	PULLEY, STARTER	1				
4	F2.6-04000400	飞轮组件	FLYWHELL ASSY	1				
5	F4-04000019	飞轮半圆键	KEY	1				
6	GB/T5783-2000	六角螺栓M6x25	BOLT	2				
7	GB/T97.1-85	平垫圈6	WASHER	3				
8	F2.6-04000600	高压包组件	HIGH PRESSURE ASSY	1				
9	GB/T5783-2000	六角螺栓M6x12	BOLT	1				

零部件名称:

汽缸 & 曲轴箱1

PARTS NAME:

CYLINDER & CRANKCASE 1



零部件名称:

汽缸 & 曲轴箱 1

PARTS NAME:

CYLINDER & CRANKCASE 1

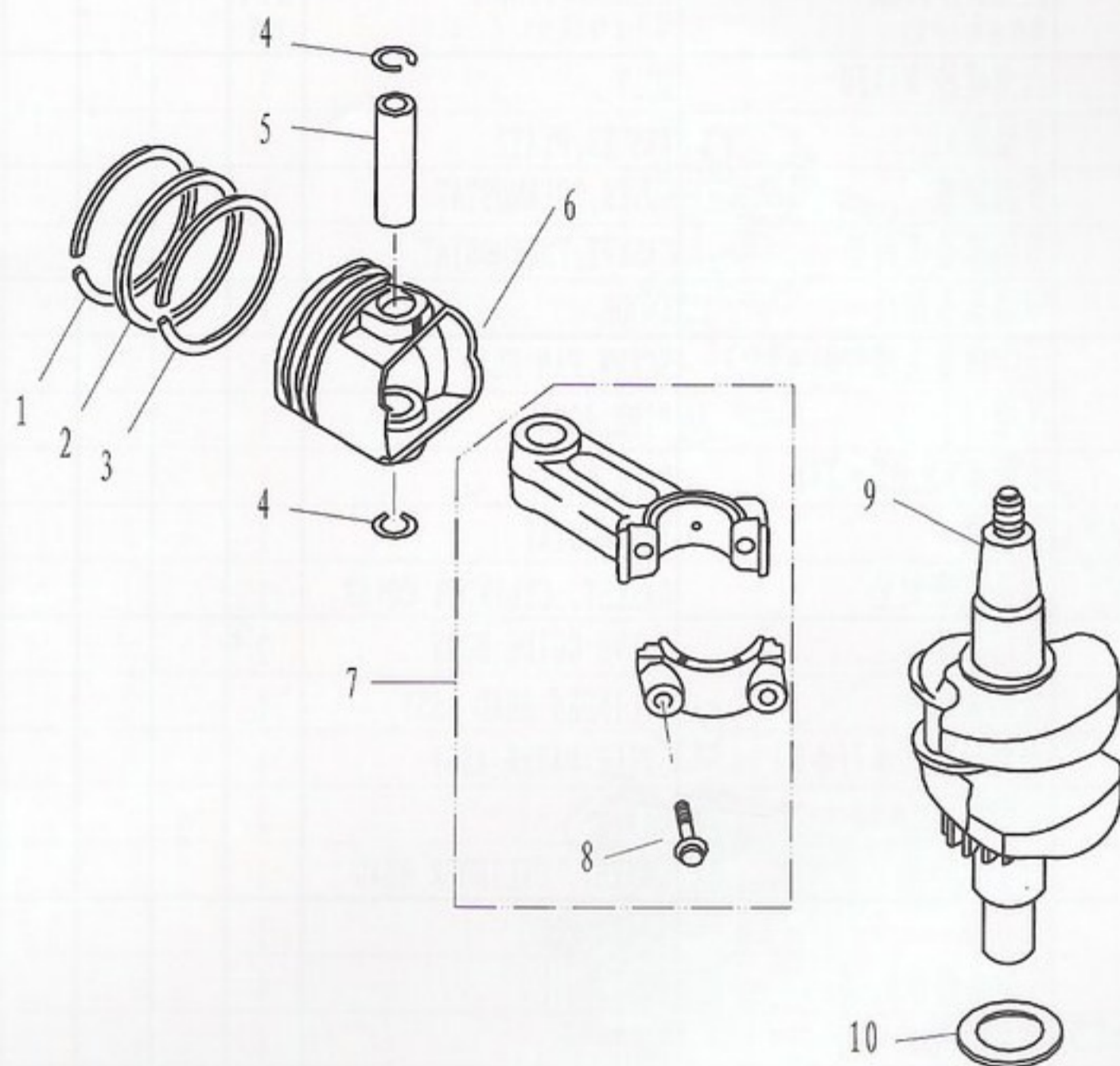
SN. 参照号码	PART NO. 零件编号	DESCRIPTION 零件名称(中文)	DESCRIPTION 零件名称(英文)	QTY 数量				REMARKS 备注
1	GB/T5783-2000	六角螺栓 M6X20	BOLT	3				
2	GB/T97.1-85	平垫圈6	WASHER, PLATE	9				
3	F2.6-04000501	节温器盖	COVER, THERMOSTAT	1				
4	F4-04000011	节温器盖密封垫	GASKET, THERMOSTAT	1				
5	F4-04070003	节温器盖阳极	ANODE	1				
6	GB/T818-85	十字槽盘头螺钉M5×25	SCREW, PAN HEAD	1				
7	F4-04010002	气咀	PIPE, JOINT	1				
8	F2.6-04000007	水管φ5×φ9×245	PIPE, WATER	1				
9	T15-04000010	节温器	THERMOSTAT	1				
10	F2.6-04000005	缸头罩密封垫	GASKET, CYLINDER COVER	1				
11	166F-010104	气门导管	VALVE GUIDE BUSH	2				
12	F2.6-04040100	气缸头组件	CYLINDER HEAD ASSY	1				
13	F15-04000005	水嘴组件(φ7/φ6)	SPILE WATER ASSY	1				
14	F15-00000013	定位销φ4×12	PIN	2				
15	F2.6-04000001	缸头复合垫	GASKET, CYLINDER HEAD	1				
16	BR6HS	火花塞	SPARK PLUG	1				
17	F4-04000034	气缸头螺栓B	BOLT	4				
18	GB/T5783-2000	六角螺栓M6×16	BOLT	6				
19	F2.6-07000008	标贴8	MARK 8	1				
20	F4-08000110	标贴10	MARK 10	1				
21	F2.6-04000006	缸头罩	COVER, CYLINDER HEAD	1				

零部件名称:

曲轴和活塞

PARTS NAME:

CRANKSHAFT & PISTON



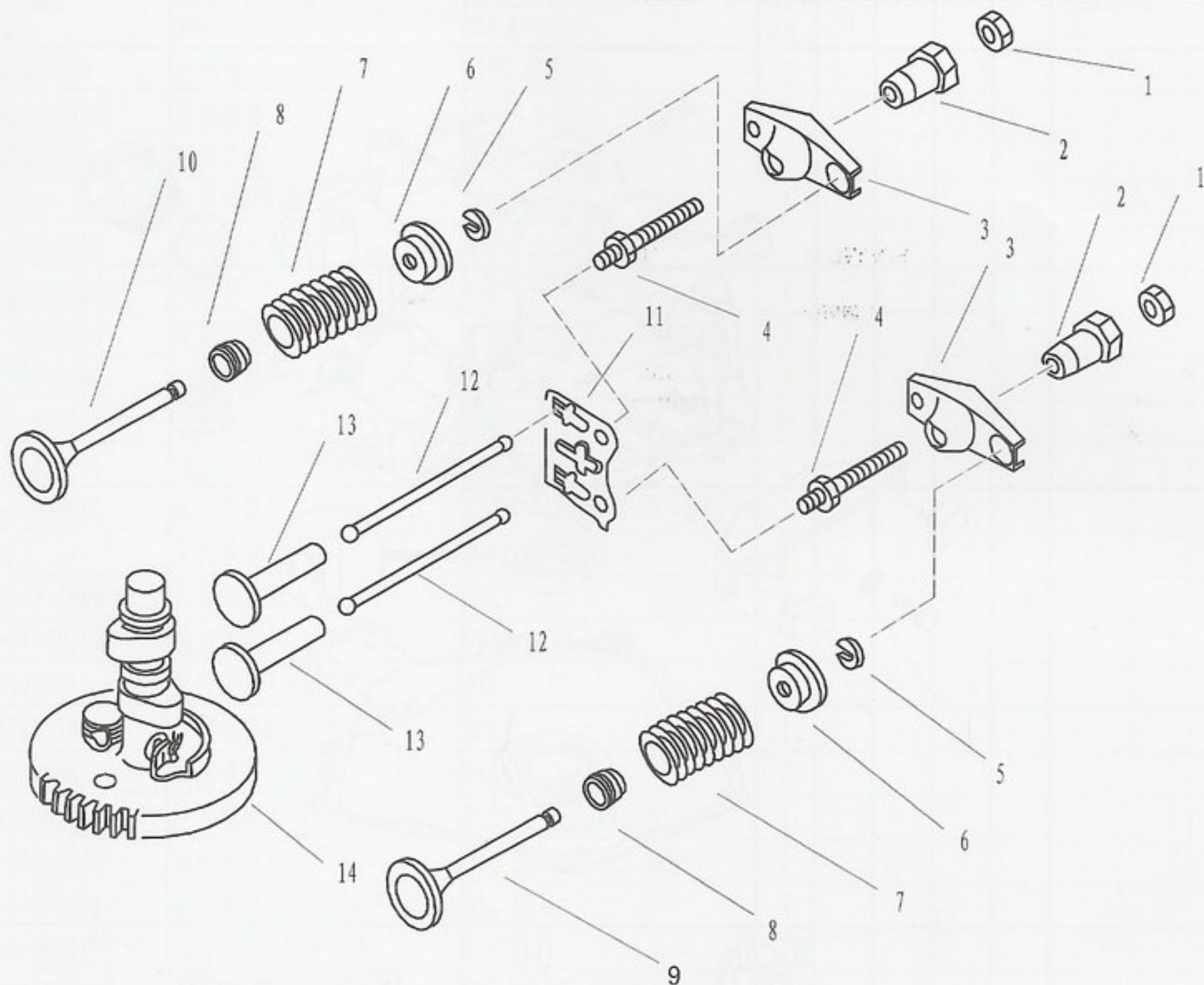
SN. 参照号码	PART NO. 零件编号	DESCRIPTION 零件名称(中文)	DESCRIPTION 零件名称(英文)	QTY 数量				REMARKS 备注
1	F2.6-04020002	活塞气环1	PISTON RING 1	1				
2	F2.6-04020003	活塞气环2	PISTON RING 2	1				
3	F2.6-04020004	活塞组合油环	COMBINED OIL RING	1				
4	F2.6-04020006	活塞销卡簧	CIRCLIP	2				
5	F2.6-04020005	活塞销	PIN, PISTON	1				
6	F2.6-04020001	活塞	PISTON	1				
7	F2.6-04020100	连杆组件	ROD, CONNECTING	1				
8	F2.6-04020103	连杆螺栓M6×30	BOLT	2				
9	F2.6-04030000	曲轴组件	CRANK ASSY	1				
10	F2.6-04000003	箱盖减磨片	WASHER, PLATE	1				

零部件名称:

凸轮轴和阀门

PARTS NAME:

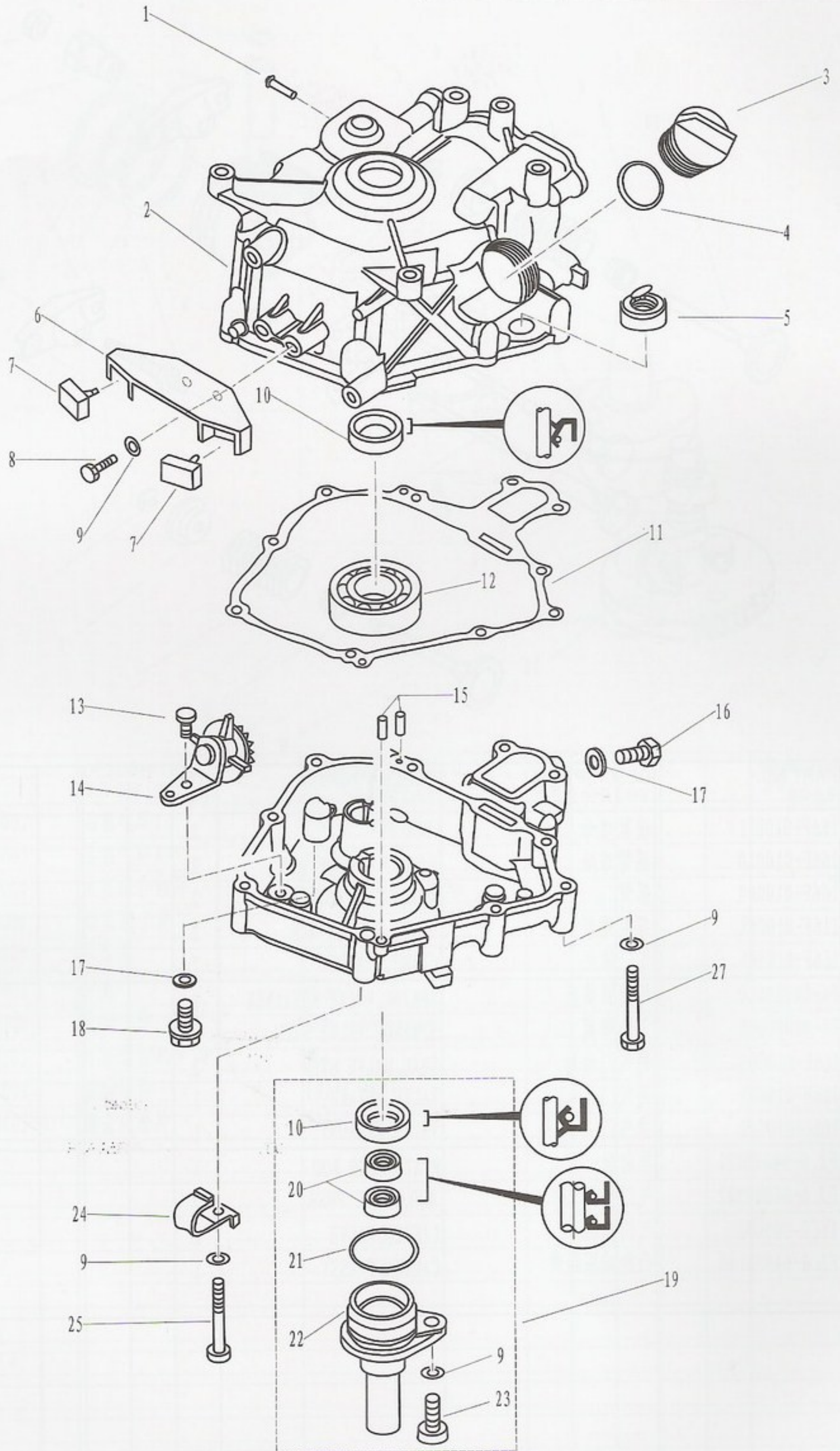
CAMSHAFT & VALVE



SN. 参照号码	PART NO. 零件编号	DESCRIPTION 零件名称(中文)	DESCRIPTION 零件名称(英文)	QTY 数量				REMARKS 备注
1	166F-010011	锁紧螺母	LOCK NUT	2				
2	166F-010010	摇臂球座	PIVOT, ROCKER ARM	2				
3	166F-010009	摇臂	ARM, VALVE ROCKER	2				
4	116F-010008	摇臂螺杆	BOLT, ROCKER ARM	2				
5	166F-010006	气门锁片	CLAMP, VALVE	2				
6	F4-04080010	气门弹簧座	SPRING, VALVE RETAINER	2				
7	F4-04080008	气门弹簧	SPRING, VALVE STEM	2				
8	166F-010003	进气门油封	SEAL, VALVE STEM	2				
9	166F-010001	进气门	VALVE, INTAKE	1				
10	166F-010002	排气门	VALVE, EXHAUST	1				
11	F2.6-04040001	导向板	PLATE, PUSH ROD	1				
12	F2.6-04000002	气门推杆	ROD, VALVE PUSH	2				
13	166F-000001	气门挺柱	LIFTER, VALVE	2				
14	F2.6-04000100	凸轮减压组件	CAMSHAFT ASSY	1				

零部件名称: 汽缸和曲轴箱 2

PARTS NAME: CYLINDER & CRANKCASE 2



零部件名称:

汽缸和曲轴箱2

PARTS NAME:

CYLINDER & CRANKCASE 2

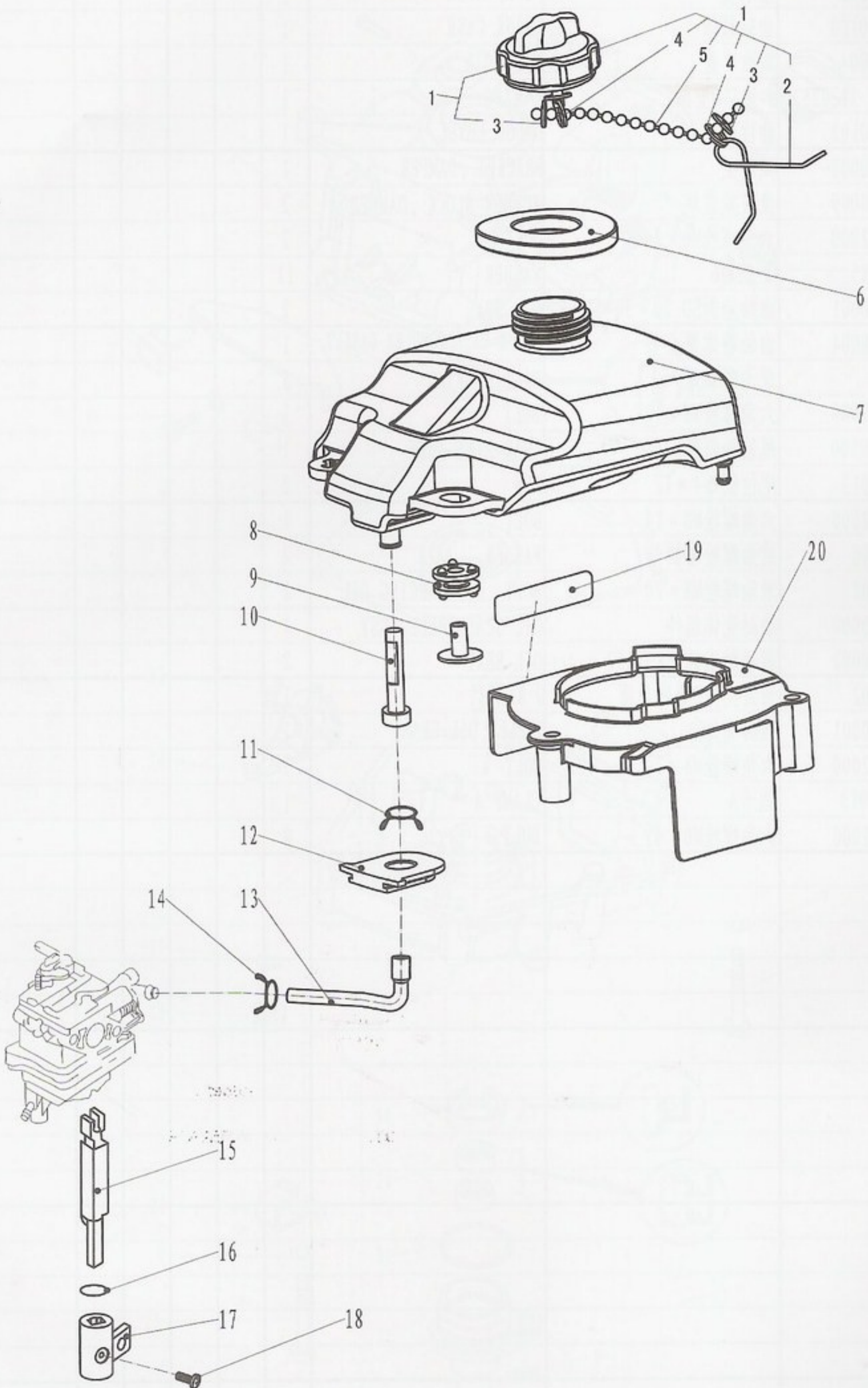
SN. 参照号码	PART NO. 零件编号	DESCRIPTION 零件名称(中文)	DESCRIPTION 零件名称(英文)	QTY 数量				REMARKS 备注
1	T15-04010202	出水嘴	PIPE, WATER	1				
2	F2.6-04010100	曲轴箱体	CRANK CASE	1				
3	F15-07050004	加油口盖	PLUG, OIL	1				
4	JASO F404 31-025	加油口O型圈	O-RING	1				
5	F2.6-04010102	油位器	GAUGE, LEVEL	1				
6	F2.6-04000008	减震架	BRACKET, DAMPER	1				
7	F2.6-04000009	橡胶减震块	RUBBER BLOCK, DAMPER	2				
8	GB/T5783-2000	六角螺栓M6×20	BOLT	2				
9	GB/T97.1-85	平垫圈6	WASHER	11				
10	F2.6-04010001	曲轴油封SD 20×30×7 HS	OIL SEAL	2				
11	F2.6-04000004	曲轴箱体复合垫	CRANK CASE COMPLEX GASKET	1				
12	62/22C3	深沟球轴承	BALL BEARING	1				
13	GB/T5783-2000	六角螺栓M6×12	BOLT	1				
14	F2.6-04050100	甩油轮组件	GEAR UINT ASSY	1				
15	F15-00000013	定位销φ4×12	PIN	2				
16	GB/T5783-2000	六角螺栓M8×14	BOLT	1				
17	F4-04000006	放油螺栓密封垫	WASHER	2				
18	F4-04000001	放油螺栓M8×20	BOLT, DISCHARGING OIL	1				
19	F2.6-04060000	油封壳体组件	OIL SEAL SHELL ASSY	1				
20	F2.6-04060002	驱动轴上油封K-5657	OIL SEAL	2				
21	F4-04060002	油封壳体O型密封圈	O RING	1				
22	F2.6-04060001	油封壳体	SHELL, OIL SEAL	1				
23	GB/T5783-2000	六角螺栓M8×20	BOLT	1				
24	F25-05000013	线卡A	CLAMP A	1				
25	GB/T5782-2000	六角螺栓M6×45	BOLT	8				

零部件名称:

燃油系统

PARTS NAME:

FUEL



零部件名称:

燃油系统

PARTS NAME:

FUEL

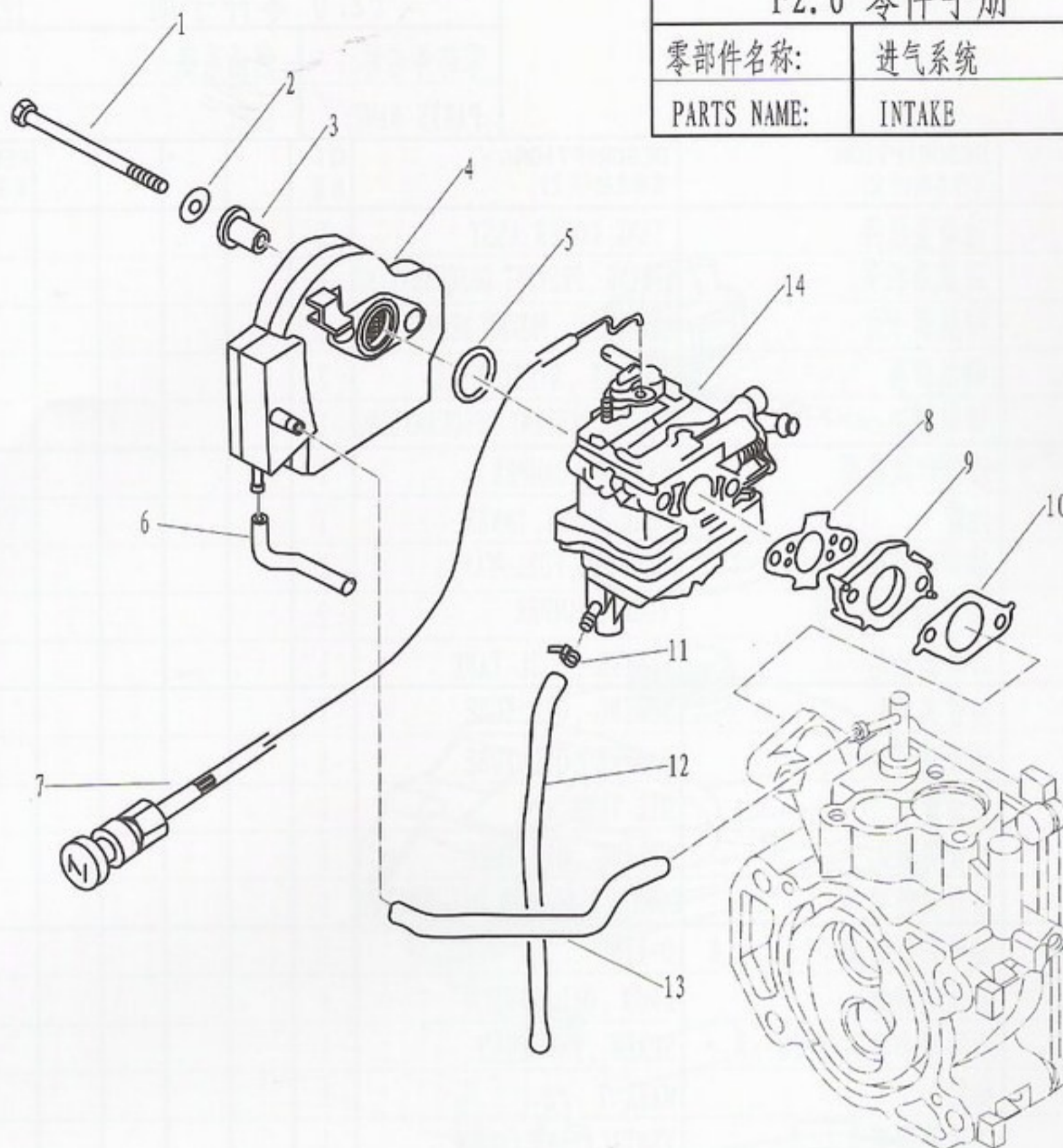
SN. 序号	PART NO. 零件编号	DESCRIPTION 零件名称(中文)	DESCRIPTION 零件名称(英文)	QTY 数量					REMARKS 备注
1	F4-04120100	油箱盖组件	TANK COVER ASSY	1					
2	F4-04120103	防脱落扭簧	SPRING , PREVENT DESQUAMATING	1					
3	F4-04120105	防脱落卡片	SHEET METAL , PREVENT DESQUAMATING	2					
4	F4-04120106	钢丝锁圈	EYELET , STEEL WIRE	2					
5	F4-04120104	防脱链	CHAIN , PREVENT DESQUAMATING	1					
6	F2.6-04000033	油箱口减震圈	WASHER , DAMPER	1					
7	F2.6-04000026	油箱	FUEL TANK , INNER	1					
8	F2.6-04000027	油箱减震圈A	DAMPER , FUEL TANK	2					
9	F2.6-04000028	油箱减震圈垫管	TUBE , DAMPER	2					
10	F4-04120005	油箱滤油芯	FILTER , FUEL TANK	1					
11	F4-05000010	油管夹簧A	SPRING , OIL TUBE	1					
12	F4-04000032	油管减震块	DAMPER , OIL TUBE	1					
13	F2.6-04000029	燃油管	OIL TUBE	1					
14	F2.6-04000030	油管夹簧C	SPRING , OIL TUBE	1					
15	F2.6-04000017	油开关连接杆	CONNECTING-ROD, OIL SWITCH	1					
16	JASOF404 24-014	油开关密封圈Φ13.8x2.4	O-RING	1					
17	F2.6-00000004	油开关旋钮	KNOB , OIL SWITCH	1					
18	GB/T823-2000	十字槽小盘头螺钉M5x8	SCREW , PAN HEAD	1					
19	F2.6-07000007	标贴7	MARK 7	1					
20	F2.6-04000022	飞轮导风罩	VENTILATIVE COVER	1					

零部件名称:

进气系统

PARTS NAME:

INTAKE



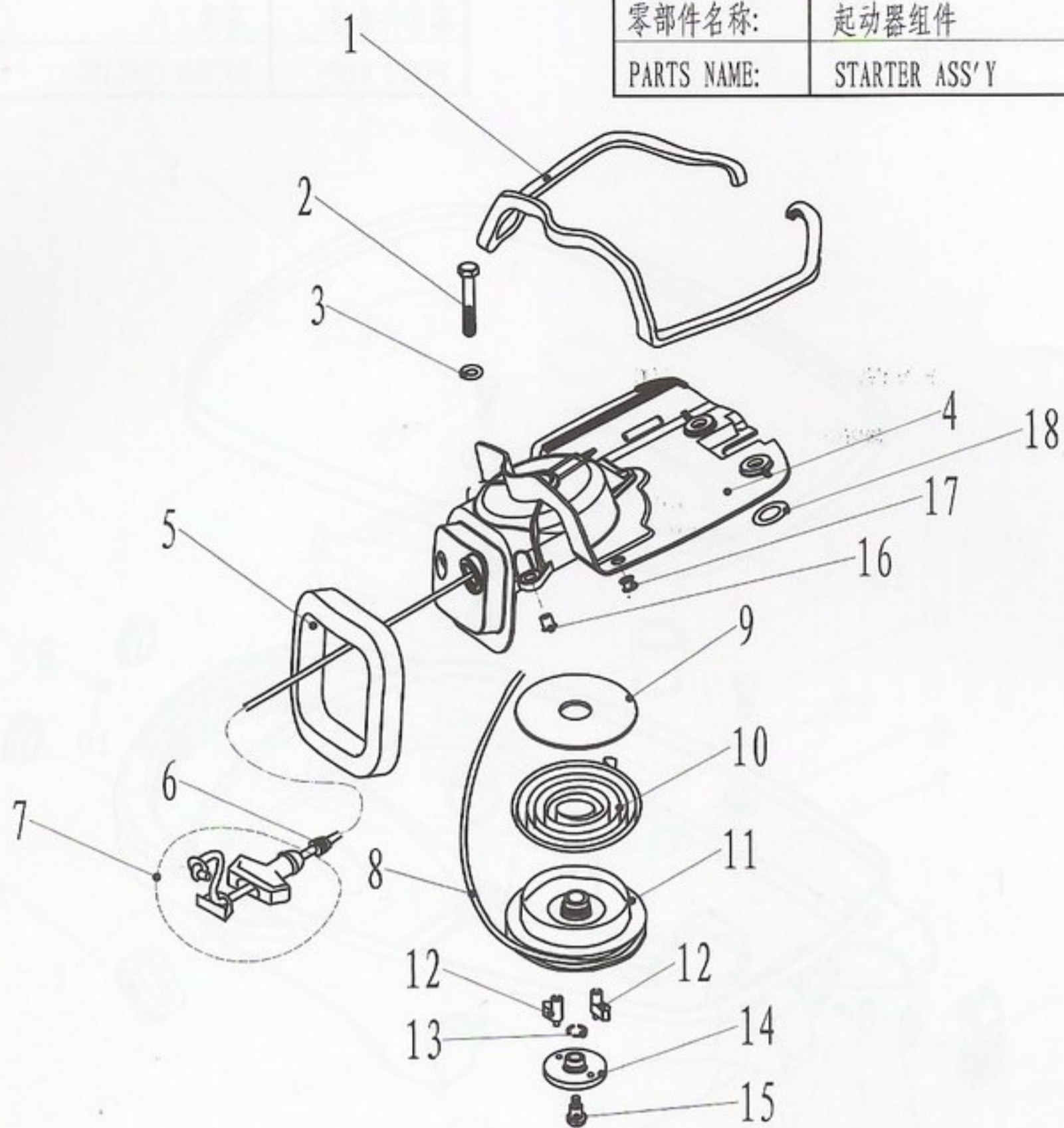
SN. 参照号码	PART NO. 零件编号	DESCRIPTION 零件名称(中文)	DESCRIPTION 零件名称(英文)	QTY 数量				REMARKS 备注
1	GB/T5782-2000	六角螺栓M6x75	BOLT	2				
2	GB/T97.1-85	平垫圈6	WASHER	2				
3	F2.6-04000012	进气消音器衬管	BUSH, INTAKE SILENCE	2				
4	F2.6-04000300	进气消音器组件	SILENCE ASSY, INTAKE	1				
5	JASO F404 24-021	进气消音器O形圈	O-RING	1				
6	F2.6-04000015	回气管BΦ2.5xΦ7x72	HOSE	1				
7	F2.6-04070200	阻风门手柄组件	CHOCK HANDLE ASSY	1				
8	F2.6-04000018	化油器密封垫B	GASKET, CARBURETOR AIRPROOF	1				
9	F2.6-04000011	化油器垫块	INSULATOR, CARBURETOR	1				
10	F2.6-04000010	化油器密封垫A	GASKET, CARBURETOR AIRPROOF	1				
11	HT2.5x60	尼龙扎带60x2.5	CLAMP	1				
12	F2.6-04000013	化油器放油管Φ4xΦ7x140	HOSE	1				
13	F2.6-04000014	回气管AΦ5xΦ9x130	HOSE	1				
14	F2.6-04000200	化油器总成	CARBURETOR	1				

零部件名称:

起动器组件

PARTS NAME:

STARTER ASS'Y



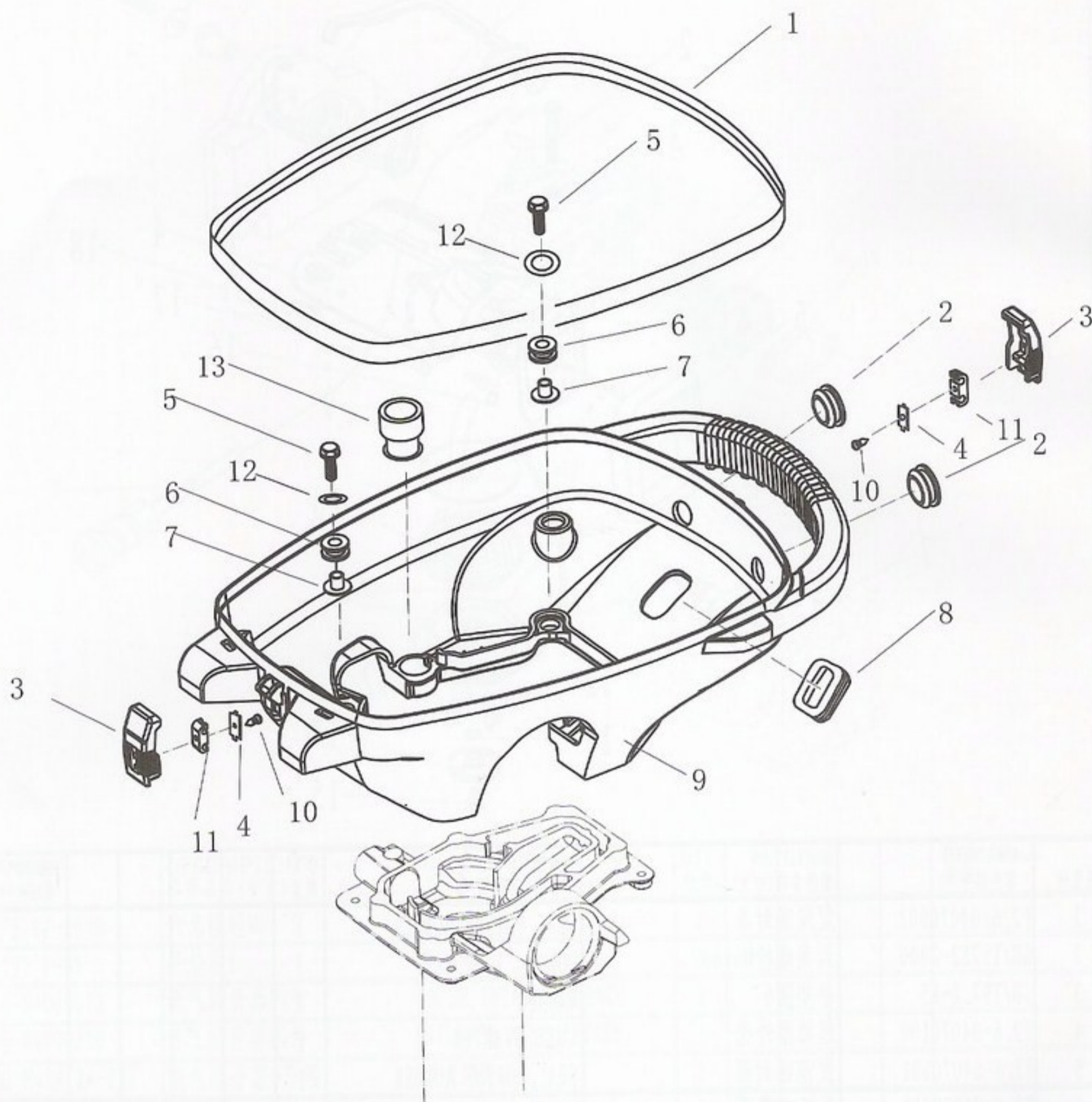
SX. 参照号码	PART NO. 零件编号	DESCRIPTION 零件名称(中文)	DESCRIPTION 零件名称(英文)	QTY 数量				REMARKS 备注
1	F2.6-04070002	发泡密封条	SEAL, FORTHY RUBBER	1				
2	GB/T5782-2000	六角螺栓M6x60	BOLT	3				
3	GB/T97.1-85	平垫圈6	WASHER	3				
4	F2.6-04070100	起动器外壳	CASE, STARTER	1				
5	F2.6-04070001	发泡密封圈	SEAL, FORTHY RUBBER	1				
6	F2.6-04070008	手柄减震圈	DAMPER, HANDLE	1				
7	F4-04130100	起动手柄组件	STARTER HANDLE ASSY	1				
8	F2.6-04070007	锦纶编织线Φ3	WIRE, STARTER	1				
9	F2.6-04070003	起动轮减磨片	WASHER, THRUST	1				
10	F4-04130005	涡形弹簧	SPRING, VOLUTE	1				
11	F2.6-04070004	起动轮	DRULL, SHEAVE	1				
12	F2.6-04070005	卡瓣	PAWL, DRIVE	2				
13	F4-04130007	起动压板夹簧	BOLT, STARTER	1				
14	F2.6-04070006	起动压板	PLATE, PRESS	1				
15	F4-04130008	起动压板螺钉	SCREW, STARTER	1				
16	F2.6-04000024	起动器垫管A	BUSH, STARTER	3				
17	F2.6-04000034	油箱减震圈B	DAMPER, FUEL TANK	2				
18	F2.6-04000025	起动器垫管B	BUSH, STARTER	2				

零部件名称:

底罩

PARTS NAME:

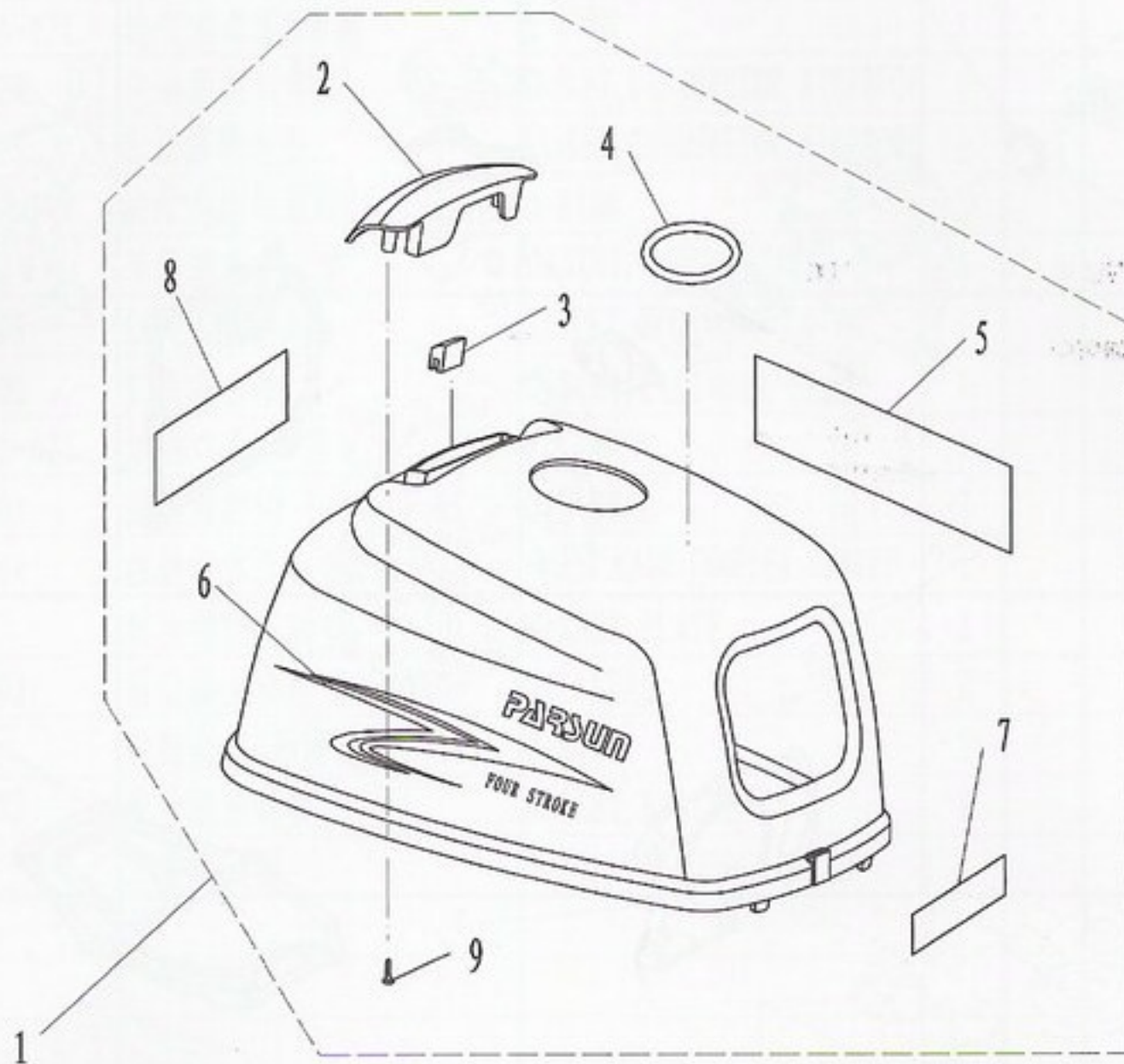
BOTTOM COWLING



SN. 参照号码	PART NO. 零件编号	DESCRIPTION 零件名称(中文)	DESCRIPTION 零件名称(英文)	QTY 数量				REMARKS 备注
1	F2.6-05000002	底罩密封条	SEAL, BOTTOM COWLING	1				
2	F2.6-05000004	圆形闷头	RUBBER PLUG, CIRCULAR	2				
3	F2.6-05000008	顶罩锁紧钩	HOOK, LOCKING	2				
4	F2.6-05000010	金属连接杆	METALLIC LINK ROD	2				
5	GB/T5783-2000	六角螺栓M6X25	BOLT	4				
6	F2.6-05000006	底罩减震圈	DAMPER	4				
7	F2.6-05000007	凸缘垫管	TUBE FLANGE	4				
8	F2.6-05000003	长方形橡胶闷头	RUBBER PLUG, QUADRATE	1				
9	F2.6-05000001	底罩	BOTTOM COWLING	1				
10	GB/T845-85	十字槽盘头自攻螺钉ST2.9X5	SCREW, TAPPING	2				
11	F2.6-05000009	锁紧钩连接件	CONNECTER-ROD	2				
12	GB/T96-85	平垫圈6	WASHER 6	4				
13	F2.6-05000005	放油口胶套	RUBBER LOVER	1				

零部件名称: 顶罩

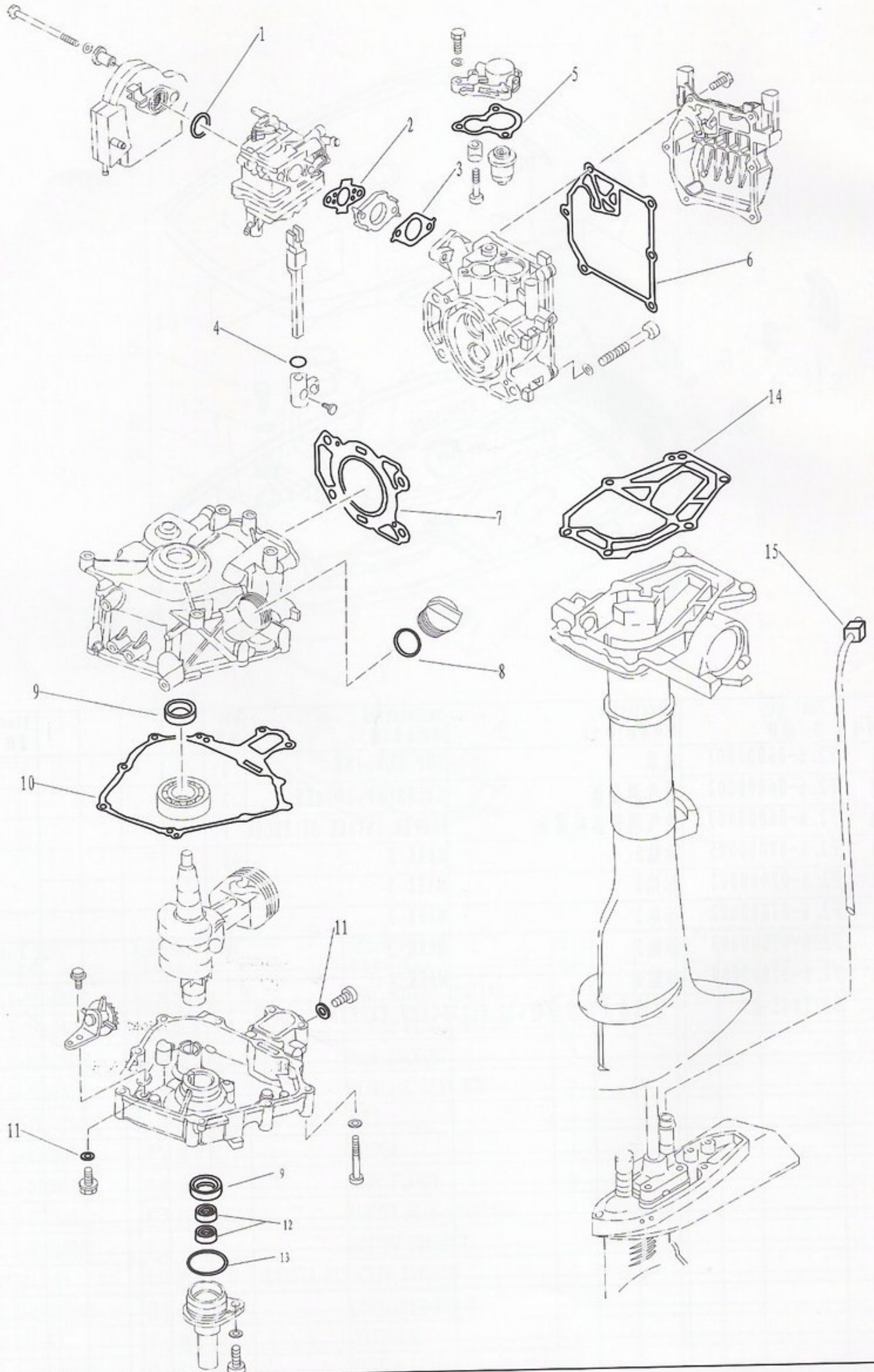
PARTS NAME: TOP COWLING



SN. 参照号码	PART NO. 零件编号	DESCRIPTION 零件名称(中文)	DESCRIPTION 零件名称(英文)	QTY 数量				REMARKS 备注
1	F2.6-06000001	顶罩	TOP COWLING	1				
2	F2.6-06000002	进气消音器	SILENCER, INTAKE	1				
3	F2.6-06000003	进气消音器减震块	DAMPER, INTAKE SILENCER	1				
4	F2.6-07000005	标贴5	MARK 5	1				
5	F2.6-07000001	标贴1	MARK 1	1				
6	F2.6-07000002	标贴2	MARK 2	1				
7	F2.6-07000003	标贴3	MARK 3	1				
8	F2.6-07000004	标贴4	MARK 4	1				
9	GB/T845-85	十字槽盘头自攻螺钉ST3.8x12	SCREW, TAPPING	2				

零部件名称: 修理套件 1

PARTS NAME: REPAIR KIT 1



零部件名称:

修理套件 1

PARTS NAME:

REPAIR KIT 1

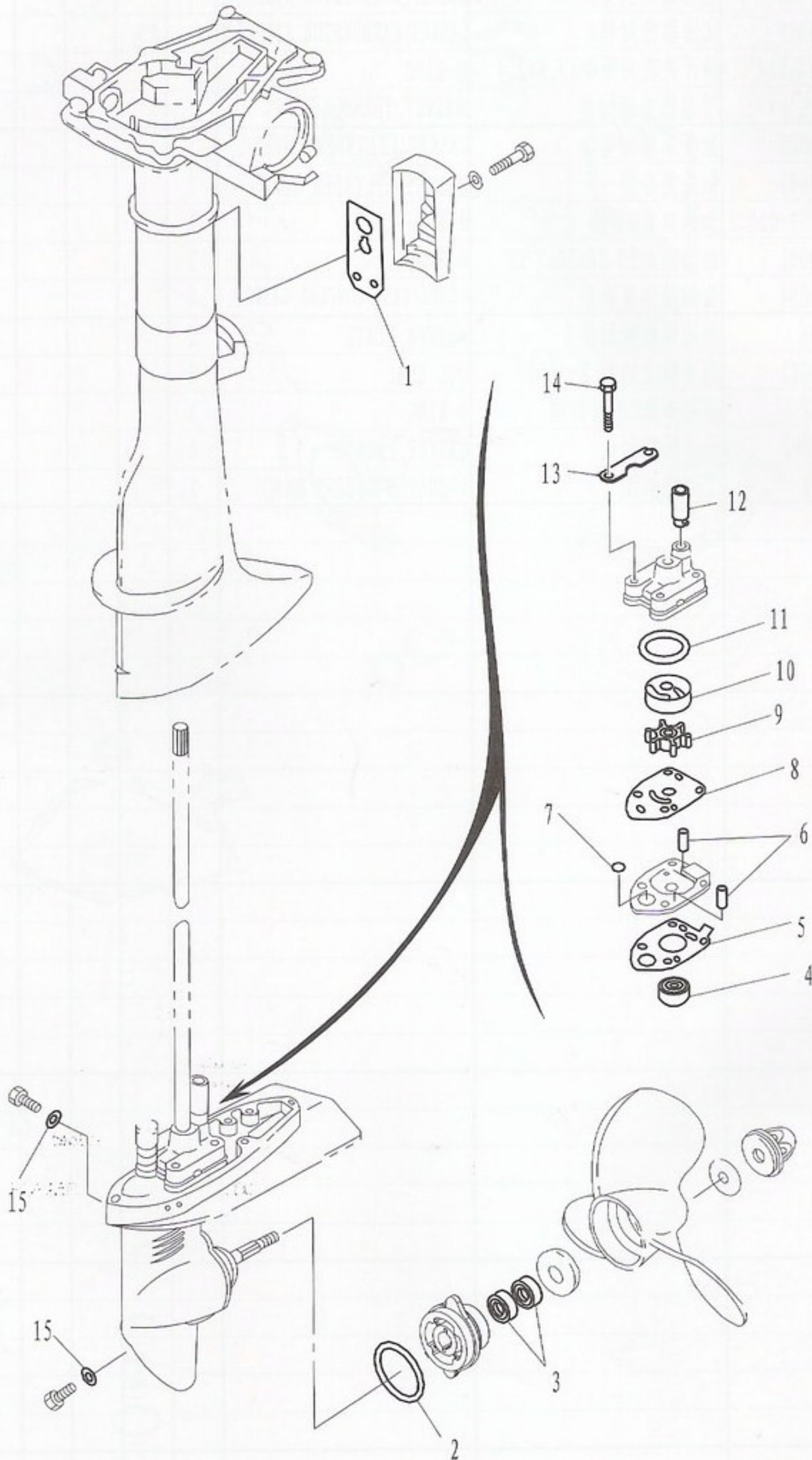
SN. 参照号码	PART NO. 零件编号	DESCRIPTION 零件名称(中文)	DESCRIPTION 零件名称(英文)	QTY 数量				REMARKS 备注
1	JASO F404 24-021	进气消音器O形圈	O-RING	1				
2	F2.6-04000018	化油器密封垫B	GASKET, CARBURETOR AIRPROOF	1				
3	F2.6-04000010	化油器密封垫A	GASKET, CARBURETOR AIRPROOF	1				
4	JASOF404 24-014	油开关密封圈Φ13.8x2.4	O-RING	1				
5	F4-04000011	节温器盖密封垫	GASKET, THERMOSTAT	1				
6	F2.6-04000005	缸头罩密封垫	GASKET, CYLINDER COVER	1				
7	F2.6-04000001	缸头复合垫	GASKET, CYLINDER HEAD	1				
8	JASO F404 31-025	加油口盖O形圈	O RING	1				
9	F2.6-04010001	曲轴油封SD 20x30x7 HS	OIL SEAL	2				
10	F2.6-04000004	曲轴箱体复合垫	CRANK CASE COMPLEX GASKET	1				
11	F4-04000006	放油螺栓密封垫	WASHER, PLATE	2				
12	F2.6-04060002	驱动轴上油封 K-5657	OIL SEAL	2				
13	F4-04060002	油封壳体O形密封圈	O-RING	1				
14	F2.6-00000003	发动机密封垫	GASKET, ENGINE	1				
15	F4-02040002	工形橡胶圈	I-SHAPED RUBBER BAND	1				

零部件名称:

修理套件2

PARTS NAME:

REPAIR KIT 2



零部件名称:

修理套件2

PARTS NAME:

REPAIR KIT 2

SN. 参照号码	PART NO. 零件编号	DESCRIPTION 零件名称(中文)	DESCRIPTION 零件名称(英文)	QTY 数量					REMARKS 备注
1	F2.6-02000005	排气盖板垫	GASKET, EXHAUST COVER	1					
2	JISB 2401 P48	水下壳体盖O形圈 $\phi 47.1 \times 3.5$	O-RING	1					
3	F4-03050002	螺旋桨轴油封13x22x7	OIL SEAL	2					
4	F2.6-03000004	驱动轴下油封9.8x24x9	OIL SEAL	1					
5	F2.6-03000007	水泵座密封垫	GASKET, WATER PUMP	1					
6	F4-03000013	定位销 $\phi 4 \times 18$	PIN	2					
7	F2.6-03000009	O形密封圈	O-RING	1					
8	F2.6-03000010	外档板	OUT PLATE	1					
9	F2.6-03000100	叶轮组件	IMPELLER ASSY	1					
10	F2.6-03000015	水泵内壳	INNER HOUSING, WATER PUMP	1					
11	JASO F404 19-033	水泵内壳O形圈	O-RING	1					
12	F4-03000021	泵壳橡胶管	RUBBER TUBE, WATER PUMP	1					
13	F2.6-03000016	泵壳固定板	PLATE, WATER PUMP FIXED	2					
14	GB/T5783-2000	六角螺栓M6x40	BOLT	4					