

INFLATABLE CANOE

Models:

Discovery-A380, A450, A550

Professionnal- A380PRO, A450PRO, A550PRO

USER`S MANUAL

The inflatable motor canoe relates to the category of pleasure boats and is intended for water sports, hunting and fishing, tourism, the use as a floating means on board of launches, yachts and other vessels.

TECHNICAL DATA SPECIFICATION

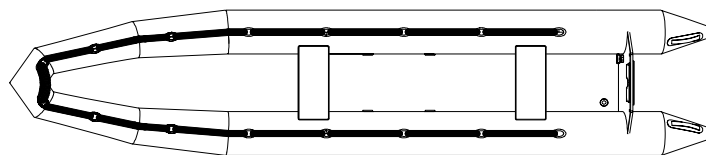
Model	A380/A380PRO			A450/A450PRO			A550/A550PRO		
Length	cm	<i>ft-inches</i>	380	12'6"	450	14'9"	550	18'1"	
Width	cm	<i>ft-inches</i>	100	3'3"	100	3'3"	104	3'5"	
Tube diameter max	cm	<i>ft-inches</i>	30	12"	30	12"	32	13"	
Number of air chambers	pcs		4+1		4+1		4+1		
Carrying capacity	kg	<i>lbs</i>	300	660	380	836	500	1100	
Passengers capacity	pers.		2		3		4		
Max. engine power	kW	<i>Hp</i>	3.7	5	4.4	6	5,9	8	
Nominal pressure	bar		0,15		0,15		0,15		
Complete weight	kg	<i>lbs</i>	22/25	48/559	27/30	59/66	36/40	79/88	
Package dimensions	cm		120x55x35		120x55x45		120x55x55		
	<i>ft-inches</i>		3'11"x1'10"x12"		3'11"x1'10"x1'6"		3'11"x1'10"x1'10"		

COMPLETE SET

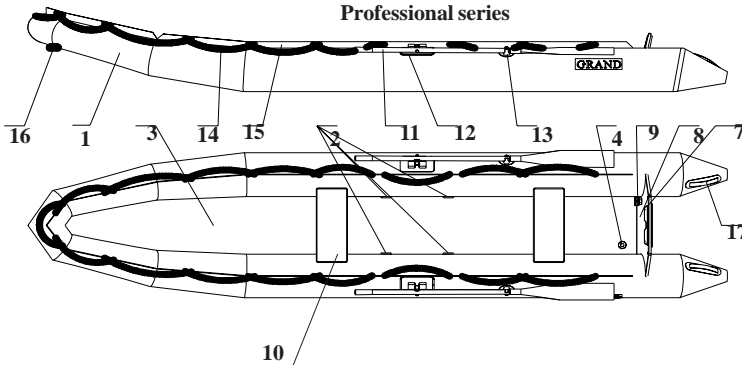
Model	Code	A380	A450	A550	A380PRO	A450PRO	A550PRO
Boat		1	1	1	1	1	1
Inflatable floor		1	1	1	1	1	1
Wooden seat with stops and brackets		2	2	3	2	2	3
Foot pump		1	1	1	1	1	1
Oars		-	-	-	2	2	2
Lifeline all over the perimeter		1	1	1	-	-	-
Lifeline whit line barall over the perimeter -		-	-	-	1	1	1
Carry bag		1	1	1	1	1	1
Maintenance kit and user`s manual		1	1	1	1	1	1

Rem: Technical data and complete set alternations may take place.

Discovery series



Professional series



Pos	Item
1	Inflatable tube
2	Tube inflation/deflation valve (4 pcs)
3	Airdeck
4	Floor inflation/deflation valve
5	Lifeline
6	Lifeline holder
7	Rigid transom
8	Transom plate
9	Drain valve
10	Wooden seat (2/3* pcs)
11	Oar
12	Oar lock (2 pcs)
13	Oar post
14	Lifeline
15	Line bar
16	Towing eye
17	Carrying handles

* for- A550/A550PRO

PREPARATION FOR EXPLOITATION

- 1 Unpack the boat and unfold the inflatable tube.
 - 2 Set all valves in the operation condition (look below).
- 3 Edges of the airdeck could fall within the fold of the tube.
 - 4 Install the wooden seat. For that:
 - fix the holders (B) of the wooden seat (A), located on the bottom surface of the seat on the guides (C),
 - slide the wooden seats along the guides, so that you can comfortably operate the boat (see Fig.1).

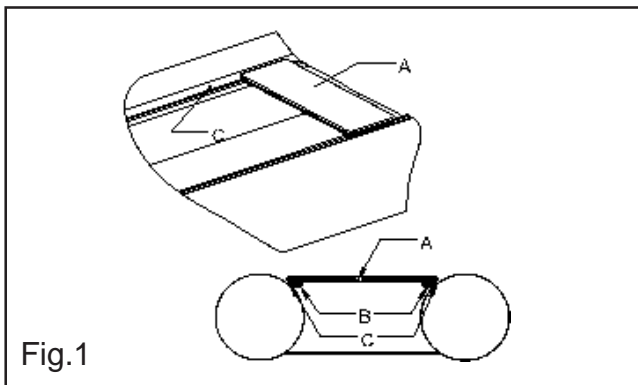


Fig.1

- 5 Apply the foot pump to fill the afterbody compartments with air to the pressure being slightly below its rated value (the balloon will be completely straightened). Then fill the forebody compartment with air up to the rated pressure.

The rated pressure value is 0.15 bar.

- 6 Fill the inflatable floor with air up to the pressure value **0.15 bar**.
- 7 On completion of filling close the valves with bonnets B (rotate them clockwise, see Fig.2).
- 8 Assemble the oars by entering the removable parts with blades into the locks until the click. Use the holes provided in the oar handles to set the oars into the rowlocks with the blades being faced to the aft. Secure the oars in the holders.
- 9 When mounting the outboard engine make sure that it is reliably fixed to the transom. In addition, take every precaution to avoid any contacts of the fuel with the boat surfaces.

INFORMATION!

In order to discharge air from the compartments, open the valves (by counterclockwise rotation) and switch the valves over into condition "OPEN" (see Fig.2).

INFLATION / DEFLATION VALVES OPERATION

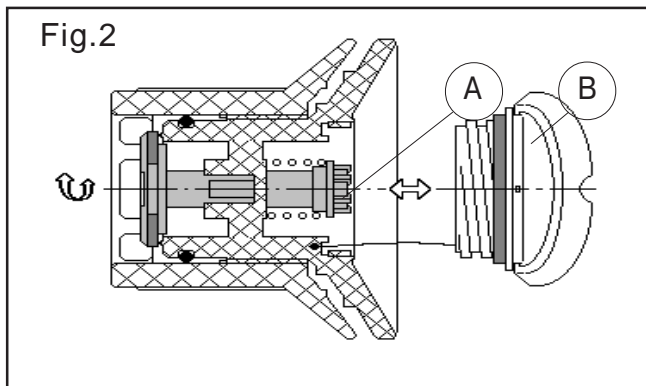
The valve has two positions of sliding part A corresponding to its two conditions (modes):

- sliding part A is withdrawn - **operation condition** of the valve (compartment air filling mode);
- sliding part A is recessed - valve in **condition "OPEN"** (compartment air discharge mode).

In order to switch the valve over from one condition to another, just press sliding part A with your finger to turn it by 90 degrees in any direction until it is fixed.

Prior to begin the compartment filling process set all valves in the

operating condition. On completion of filling close the valves with bonnets B (rotate them clockwise)(see Fig. 2).



In order to discharge air from the compartments, open the valves (by counterclockwise rotation) and switch the valves over into **condition "OPEN"**.

ATTENTION !

1. Boat exploitation with board and airdeck pressure more than nominal decreases boat service life.
2. Board air chambers and airdeck are hermetical if they keep own form during 8 hours. In this case:
 - primary pressure has to be nominal;
 - input valves openings have to be tightly closed by plugs.
3. Until sailing satisfy oneself that drain opening on a transom is closed by plug.

MAINTENANCE

- Avoid excessive increasing of pressure in the board, especially from heating by the sun rays.
- After exploitation take off sand and dirt from boat surface, and carefully dry it.
- Avoid the water getting into the chambers. If a fuel or an oil / gas gets to the boat surface it is necessary to wash the soiling place by soap water as soon as possible and dry.
- Pay attention to the condition of bottom and seat surfaces. If the coating is destroyed it is necessary to dry this element and restore the defend ply.
- After the season prepare the boat to winter keeping. Clean boat surface from sand and dirt and make the necessary repairs, if damages take place. If it is possible, keep the boat in the open and slightly pumped state in air temperature 0-25°C. The boat must be protected from the sun rays.
- Insignificant boat repairing (eliminating the board punctures or cuts) you may carry out by yourself. In this case use the coated fabric patches from the complete set. Ask your dealer for the correct type of glue you may use for the repair.
- In case if sufficient damages of floor, tube body, partitions or seams it is recommended to apply for professional repair in authorized service station.

OPERATING REGULATIONS

Dear user,
We thank your for your purchase and do hope that you will have a great fun of it. However, to make your joy and pleasure complete, we would request you to read carefully and observe the directions and recommendations specified below.

IT IS STRICTLY FORBIDDEN :

to handle the boat in the state of intoxication and without individual rescue means being used (life-saving belts, jackets, etc.)

IT IS FORBIDDEN :

- to overload the boat above the design weight-carrying capacity;
- to use an outboard engine of power exceeding the maximum allowable value;
- to use the boat with the wave height being above 0.5 m;
- to bring the tube pressure up to the value exceeding the rated one (0.15 bar);
- to drag the boat across a rough surface.

■ Danger of usage of engine having insufficient or excessive power

According to the safety regulations, each inflatable boat should be furnished with an outboard engine having the maximum allowable power. You will find the data on the maximum allowable power of the engine on the manufacturer's plate with the designation of the model type inscribed thereon. The plate is fixed in the afterbody of the boat. However, you should choose the engine power within the allowable range so as to ensure that you may safely reach the shore when heading into the wind or into the current.

■ Observation of local shipping regulations

For each particular water area the local shipping regulations are in force. You may apply for information to the appropriate water transport and shipping directorate, as well as to the water police.

■ Proper usage of boat equipment and accessories

Use the boat equipment and accessories only on their direct purpose to ensure reliable service.

■ Availability of Oars

Even when sailing with an outboard engine you should

always have the oars available with you so that you were able to reach the shore without outside assistance in case of any damage to the boat.

■ Usage of emergency stop switch

On your request any outboard engine seller may provide your engine with the emergency stop switch. During navigation the switch should be connected to the wrist of your hand by means of a cord. In case you fall overboard, even if being a steersman, the switch will cut out the engine and the propeller. This arrangement will enable you to avoid any traumas and to reach the boat.

■ Prevention of damages caused by electrolyte or fuel leakages

Take all possible precautions against penetration of fuel or electrolyte from the storage battery into the inflatable boat. If it does happen wash thoroughly the fouled spots with water.

■ Cargo arrangement and stowing, attachment of items and prevention of falling overboard

You should be always sure that the number of people on board never exceeds that specified in the user's manual or on the manufacturer's plate provided on the transom. The boat will retain an adequate floatability and will not keel over only provided that the load is arranged reasonably. Therefore, do not accommodate all passengers on the same side of the boat. Arrange the cargo to be carried uniformly inside the boat, all items being reliably secured on the bottom of the boat. All passengers should be accommodated inside the boat. The occupied seats should not be left throughout the entire sailing time. When sailing with an outboard engine the steersman should shift his body forward in the course of acceleration to prevent the boat forebody from raising under the force of upthrust waves.

■ Presence of sharp and pricking objects on board

Despite the strong shell of the boat we are recommended to handle sharp and pricking objects being on board with care. For example, it concerns a knife blade, fish-hook point, etc.

■ Rocky shore, mole, shoals (for example, sand banks, coral reefs, rocks)

Approach rocky shores, shoals, moles, etc. carefully to avoid damages to the boat. It is strictly prohibited to drag the boat across rough surfaces (shingle, rocks, concrete, etc.).

■ Check at navigation

In case of prolonged navigation with the use of an outboard engine, regularly check to ensure that the engine is reliably attached to the boat. If the engine was attached carelessly the attachment may work loose under the action of vibration. Besides, check air chambers pressure at regular intervals, since the pressure may vary under the effects of outside air temperature and atmospheric pressure variations.

Never forget to monitor regularly the quantity of fuel in the fuel tank. Keep always in mind that the quantity of fuel should be sufficient for you to sail to your final destination.

■ Availability of rescue means (life-saving jackets, distress signals, spare parts)

If you are planning to go beyond the protected water areas you should provide all passengers on board with life-saving jackets. All passengers should put on life-saving jackets under strong wind and heavy seaways conditions. Those passengers who cannot swim should always carry the life-saving jackets while on board! It is also recommended to keep constantly distress signal means on board.

■ Towing

At towing the towing rope length should not be at least 3 lengths of the boat, the rope being secured to both boats in a manner ensuring its immediately, single-motion release.

The steersman of the towed boat should be assisted by another crew member to monitor the process of towing.

in this case, certain communication gestures should be agreed upon beforehand.

■ Damage to one of air chambers

The inflatable boat is designed to provide an adequate stability in case of the complete damage to one the air chambers (balloon compartments) at the expense of the remaining air chambers and wooden floor. Thanks to it, you will be able to reach safely the nearest shore. Reduce the speed and shift your body to the undamaged part of the boat. Watch changes in stability. After this immediately head for the nearest shore. To prevent penetration of water into the boat, pull the shell of the damaged air chambers upwards.

■ Anchor and mooring fast fastening

Fix the anchor and towing ropes in the forebody of the boat to the front towing ring. Fix the back spring on the transom via special holes.

■ Danger of currents and wind

Before navigation of the boat in unfamiliar waters make detail inquiries about local conditions and regulations! Currents, wind, shoals, rising and falling tides, as well as weather variations may imply serious danger!

The "GRAND" Company employes would like to wish you a pleasant and safe leisure time!

